

PREPARED BY: BLACK HAWK COUNTY ENGINEERS OFFICE  
316 E. FIFTH STREET, ROOM 211 WATERLOO, IOWA 50703

PH.# (319) 833-3008  
FAX# (319) 833-3139  
SLSI 9-94  
CERT 03-09

UNITED STATES PUBLIC LAND SURVEY CORNER CERTIFICATE OF  
Land Survey Monuments situated in Section 32, Township 89 N,  
Range 11 W, of the Fifth Principal Meridian, BLACK HAWK County, Iowa.  
Previously recorded in MISC Book 319, Page 306, in County Recorder's Office.

(Show reason for preparing this certificate): The corner monument has been Replaced or Modified, per Ia. Code 355.11(1)(c)  
(Evidence and detailed procedures used in establishing the corner position(s) and monumentation found or placed.)

Monument Description and Remarks: S. 1/4 COR. FOUND 2 1/2" Ø IADOT ALUM. CAP  
IN ACC CORE HOLE, PER CURRENT RECORD (NOTE, ADDITIONAL RECORD IN MISC. BK. 335  
p.183 REFERS TO INCORRECT SECTION, AND WAS REFILED). CLEANED CORE HOLE DOWN ±5"  
DEP. EXIST. ACC OVERLAY TO PCC PAVEMENT, WITH "NO" ADDITIONAL MONUMENTATION IN PCC  
SLAB FOUND. REFER TO PLAT OF SURVEY, MISC. BK. 319 p.304 FOR ADDITIONAL DETAILS,  
AND N. 1/4 CORNER SECT. 06-T88-R11 FOR 1955 PAVING PLAN DETAILS. TEMP. REF. w/RTK  
GPS (TWO LINE w/WT. AVG.), AND MILLED 2" EXIST. ACC OVERLAY & ADDED 5" H.M.A./A.C.C.  
OVERLAY. CORNER RESET WITH #5 (5/8") x ±7" L. REBAR PER RTK GPS REF., AND RETIED.  
LAND CORNER IS LOC. ±0.5' NORTH OF NEW C.L. PAVING JOINT, WITH PREV. REFERENCE TIE  
TO S.W. STABLE, YET ASSUME DISTURBED FROM CURRENT RECORD.

NOTE: ALL DISTANCES PLUMB/HORIZ.  
(H.D.), "UNLESS DENOTED".

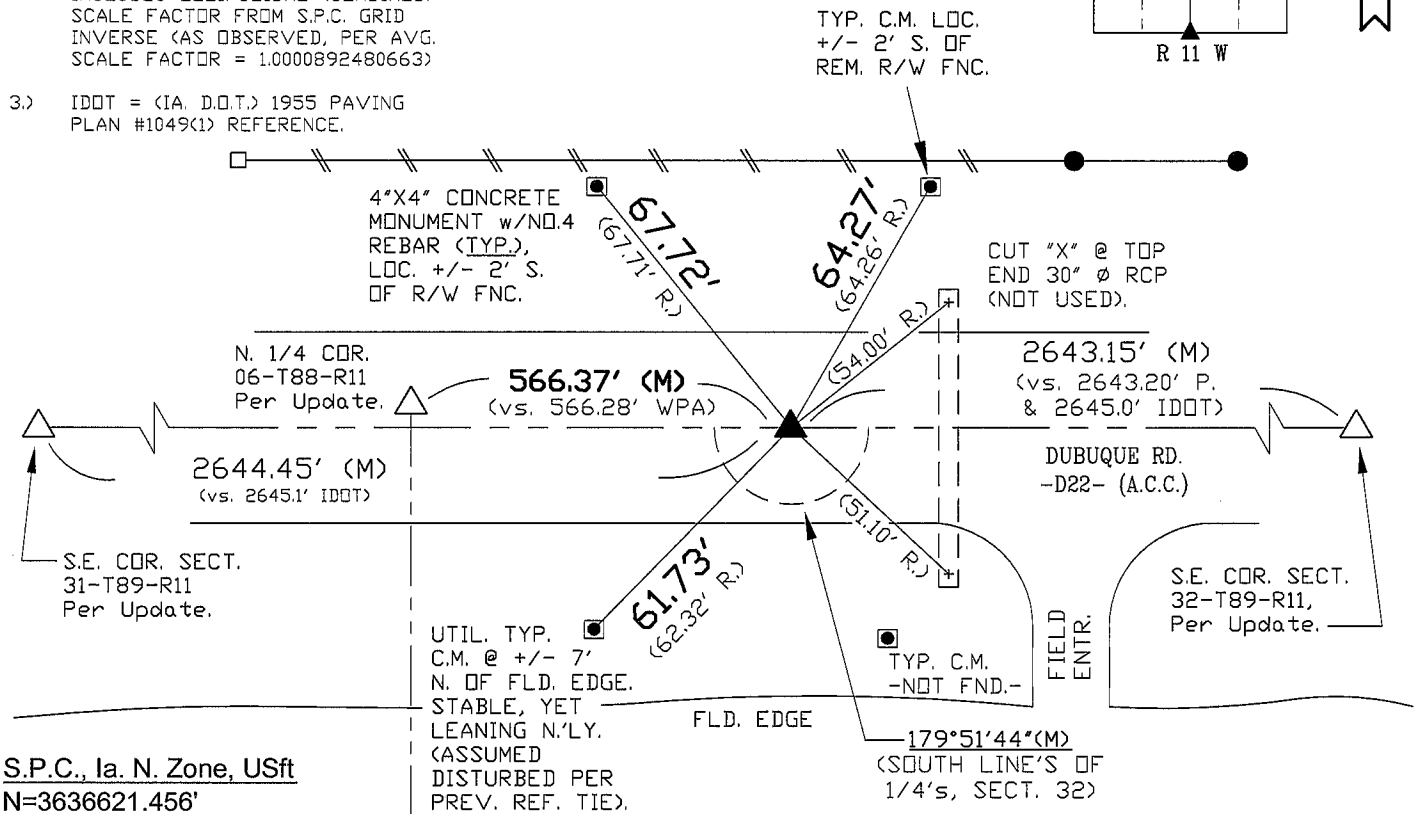
### PLAN VIEW

"NOT TO SCALE"

BHco Hist. Ties: BK. #1002 p.32 89-11  
FIELD BOOK: BHco. #488 p.45 (#1007)

(Show a minimum of three reference ties to durable physical objects, relevant monuments and physical conditions  
that will enable recovery of the corner.)

- 1.) TIES PER EDM MEASURE IN STD.  
PRISM MODE, WHILE UTILIZING  
"INDIRECT" MEASURE.
- 2.) SECTION LINE MEASURE REFERS  
TO "LOCAL GROUND" DIST. AND  
INCLUDES ELLIPSOIDAL (COMBINED)  
SCALE FACTOR FROM S.P.C. GRID  
INVERSE (AS OBSERVED, PER AVG.  
SCALE FACTOR = 1.0000892480663)
- 3.) IDOT = (IA. D.O.T.) 1955 PAVING  
PLAN #1049(1) REFERENCE.



S.P.C., Ia. N. Zone, USft

N=3636621.456'

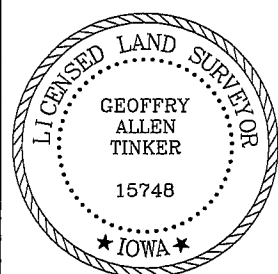
E=5280207.884'

(NAD83-2007 "BHco07", RTK Obs.)

FIELD SURVEY: G.T. & J.Z. & D.B. 06/23/09

PREPARED BY: G.T. & J.Z. & D.B. 9/23/09

### CERTIFICATION



I hereby certify that this land surveying document  
was prepared by me or under my direct personal  
supervision and that I am a duly licensed Land  
Surveyor under the laws of the State of Iowa.

*Geoffrey Allen Tinker* 09/23/2009  
Geoffrey Allen Tinker (date)

License Number 15748

My license renewal date is December 31, 2010

Pages or sheets covered by this seal:

This Land Corner Certificate Only.

### LIST CORNERS TO BE INDEXED

Corner	Section -	Township -	Range
S. 1/4 Cor.	32	89 N	11 W

### INDEX OF ABBREVIATIONS

(M) = "Measured" Dimension  
(P) = "Platted" Dimension  
(R) = "Record" Dimension  
(C) = "Calculated" Dimension  
"IGS" = Iowa Geodetic Survey  
"WPA" = Works Progress Admin. Survey  
"G" = per George Miller Survey (BHco Surveyor 1858-1860)  
"B" = per John Ball Survey (BHco Surveyor 1866-1891)  
"N" = per Nathan Barber Survey (BHco Surveyor 1908-1931)  
"NP" = Reflectorless EDM Meas.  
"MLM" = Indirect Measure  
"CM" = Concrete Monument  
"SM" = Survey Marker Spike/Tag