

SC ✓
Misc ✓
INDEX 96
MARGIN
PROOF
COMPARE
County Assessor

13275

BLACK HAWK COUNTY IOWA:SS FILED FOR RECORD
JAN 22 1996 AT 11:30 A M, AND RECORDED
IN Misc BOOK 319 PAGE 306

Patricia J. Lass RECORDER
FEE 1- 5.00/
WAYNE CLAASSEN ENGINEERING & SURVEYING INC

WAYNE CLAASSEN ENGINEERING AND SURVEYING, INC.
P.O. BOX 898 WATERLOO, IOWA 50704-0898

PHONE: (VOICE) 319-235-6294
(FAX) 319-235-0028

UNITED STATES PUBLIC LAND SURVEY CORNER CERTIFICATE

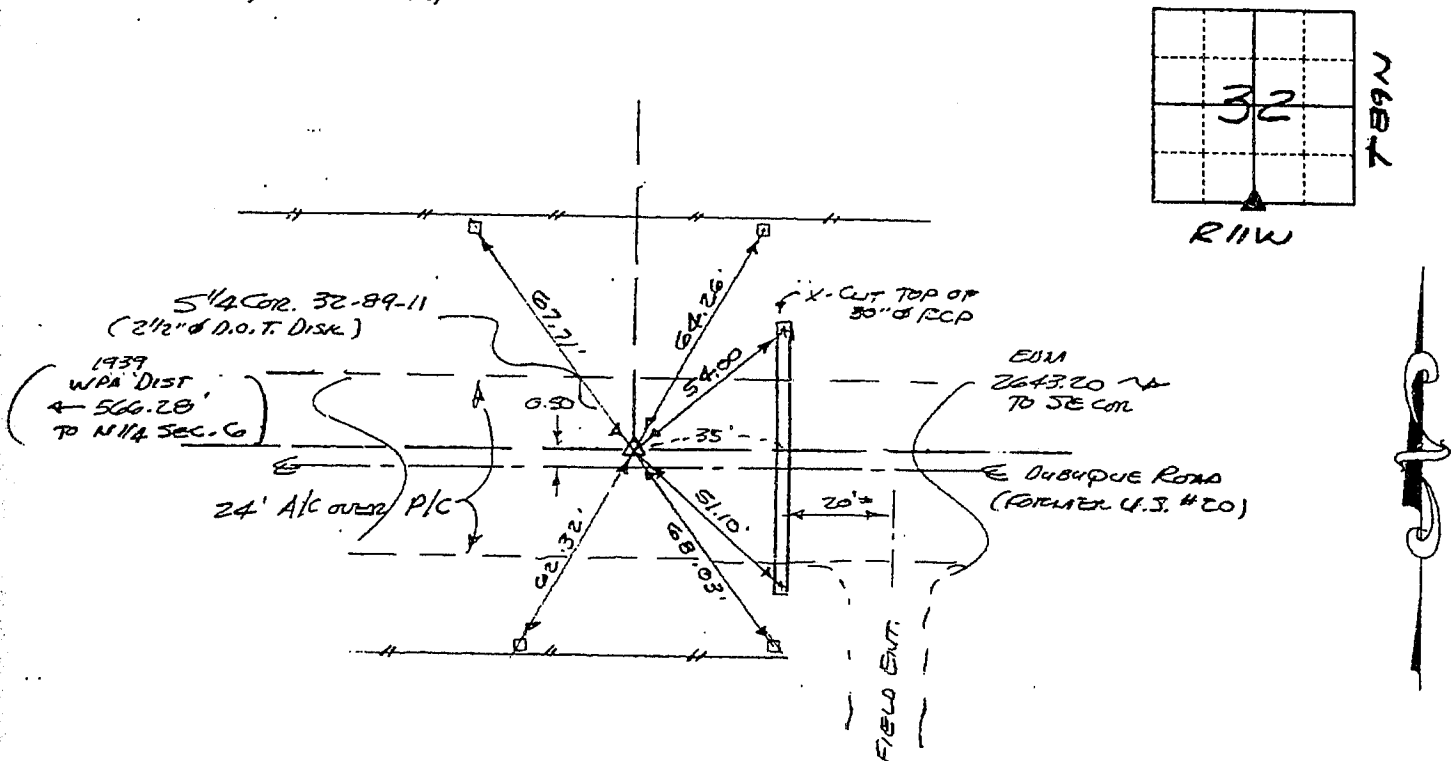
Land Survey Monuments situated in Section 32, Township 89N, Range R11W, of the Fifth Principal Meridian, BLACK HAWK County, Iowa.
Previously recorded in N/A in County Recorder's Office.
(book, page, document number, etc.)

(Show reason for preparing this certificate, the evidence and detailed procedures used in establishing the corner positions and monumentation found or placed.)

Monument Description and Remarks FOUND 2 1/2" Ø D.O.T. DISK IN ASPHALT OVERLAY
PER D.O.T. DESCRIPTION LD 116-577 (2645' WEST OF SE COR SEC. 32) @ 0.5'
NORTH OF E HIGHWAY

PLAN - VIEW

(Show a minimum of three reference ties to durable physical objects, relevant monuments and physical conditions that will enable recovery of the corner.)



421-69

I hereby certify that the survey work was completed and this certificate was prepared by me or under my direct personal supervision and that I am a duly registered land surveyor under the laws of the state of Iowa.

Signature: *F. William King*

(Name typed or printed: F. WILLIAM KING)

Date: 1-18-1996

Reg. No. 8033

SEAL

List Corners to be Indexed

Corners	Section	Twp	Range
S 1/4	32	89N	11W