

Jeffrey P. Helland, 1107 Technology Parkway, Cedar Falls, Iowa 50613-6951, (319)-266-0161

UNITED STATES PUBLIC LAND SURVEY CORNER CERTIFICATE OF

LAND SURVEY MONUMENTS SITUATED IN SECTION NO. 32, TOWNSHIP NO. 89 NORTH, RANGE
NO. 11 WEST OF THE FIFTH PRINCIPAL MERIDIAN, Black Hawk COUNTY, IOWA.
PREVIOUSLY RECORDED IN BOOK _____, PAGE _____.

(SHOW REASON FOR PREPARING THIS CERTIFICATE, THE EVIDENCE AND DETAILED PROCEDURES USED IN ESTABLISHING THE
CORNER POSITIONS AND MONUMENTATION FOUND OR PLACED.)

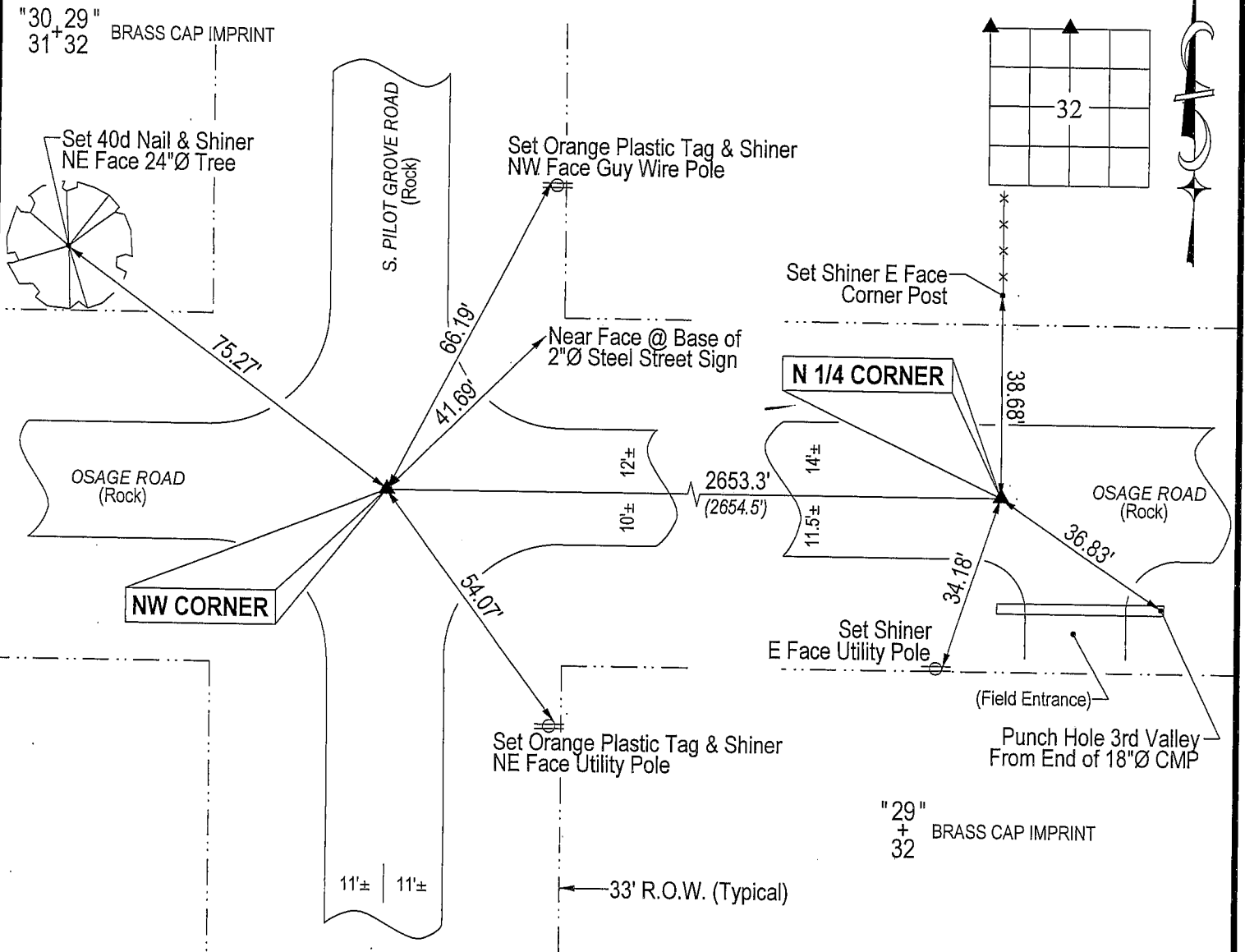
MONUMENT DESCRIPTION AND REMARKS:

No Corner Certificates on File. Survey completed in the SW 1/4 of Sec. 29-T89N-R11W.

- NW CORNER: Black Hawk County Engineer reference ties call for a "concrete monument w/brass cap." Found said concrete monument w/brass cap 1.5' deep. Found 1/2" iron twist pin on North side of concrete monument. Set No. 4 rebar (1' long) w/orange plastic cap #16264 above concrete monument 0.3' deep.
- N 1/4 CORNER: Black Hawk County Engineer reference ties dated 6/30/1939 call for a "concrete monument w/brass cap." Found said concrete monument w/brass cap 0.5' deep. Found 5/8" iron twist pin on North side of concrete monument, top bent West. Top of concrete monument is leaning Easterly.

PLAN VIEW

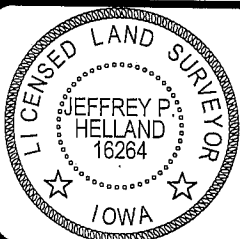
(SHOW A MINIMUM OF THREE REFERENCE TIES TO DURABLE PHYSICAL OBJECTS, RELEVANT MONUMENTS AND PHYSICAL
CONDITIONS THAT WILL ENABLE RECOVERY OF THE CORNER.)



HELLAND ENGINEERING & SURVEYING, LTD.
1107 Technology Parkway
Cedar Falls, Iowa 50613-6951
(319)-266-0161

(00.00') - Per WPA Chaining Notes Dated 6/30/1939

File Name: 04-115c1.drg



I hereby certify that this land surveying document was prepared
and the related survey work was performed by me or under my
direct personal supervision and that I am a duly licensed Land
Surveyor under the laws of the State of Iowa.

Jeffrey P. Helland 2/2/04
Jeffrey P. Helland
License Number 16264
My license renewal date is December 31, 2005.
All pages or sheets are covered by this seal except:

LIST CORNERS TO BE INDEXED			
CORNER	SECTION	TOWNSHIP	RANGE
NW CORNER	32	89N	11W
N 1/4 CORNER	32	89N	11W

Rec.