

SC
MISC
INDEX *DE*
MARGIN
PROOF
COMPARE

BLACK HAWK COUNTY IOWA:SS
FILED FOR RECORD Jul 26, 1999 AT
3:00 P.M. AND RECORDED IN BOOK 335
OF MISC PAGE 183
Christina J. Sloss RECORDER
FEE 1-5.00/
HELLAND ENGINEERING & SURVEYING, LTD.

1966

Paul H. Helland, 1107 Technology Parkway, Cedar Falls, Iowa 50613-6951, (319)-266-0161

UNITED STATES PUBLIC LAND SURVEY CORNER CERTIFICATE OF

LAND SURVEY MONUMENTS SITUATED IN SECTION NO. 32, TOWNSHIP NO. 89 NORTH, RANGE
NO. 11 WEST OF THE FIFTH PRINCIPAL MERIDIAN, BLACK HAWK COUNTY, IOWA.

PREVIOUSLY RECORDED IN BOOK 319, PAGE 305. (SY4 COR)

(SHOW REASON FOR PREPARING THIS CERTIFICATE, THE EVIDENCE AND DETAILED PROCEDURES USED IN ESTABLISHING THE CORNER POSITIONS AND MONUMENTATION FOUND OR PLACED.)

MONUMENT DESCRIPTION AND REMARKS:

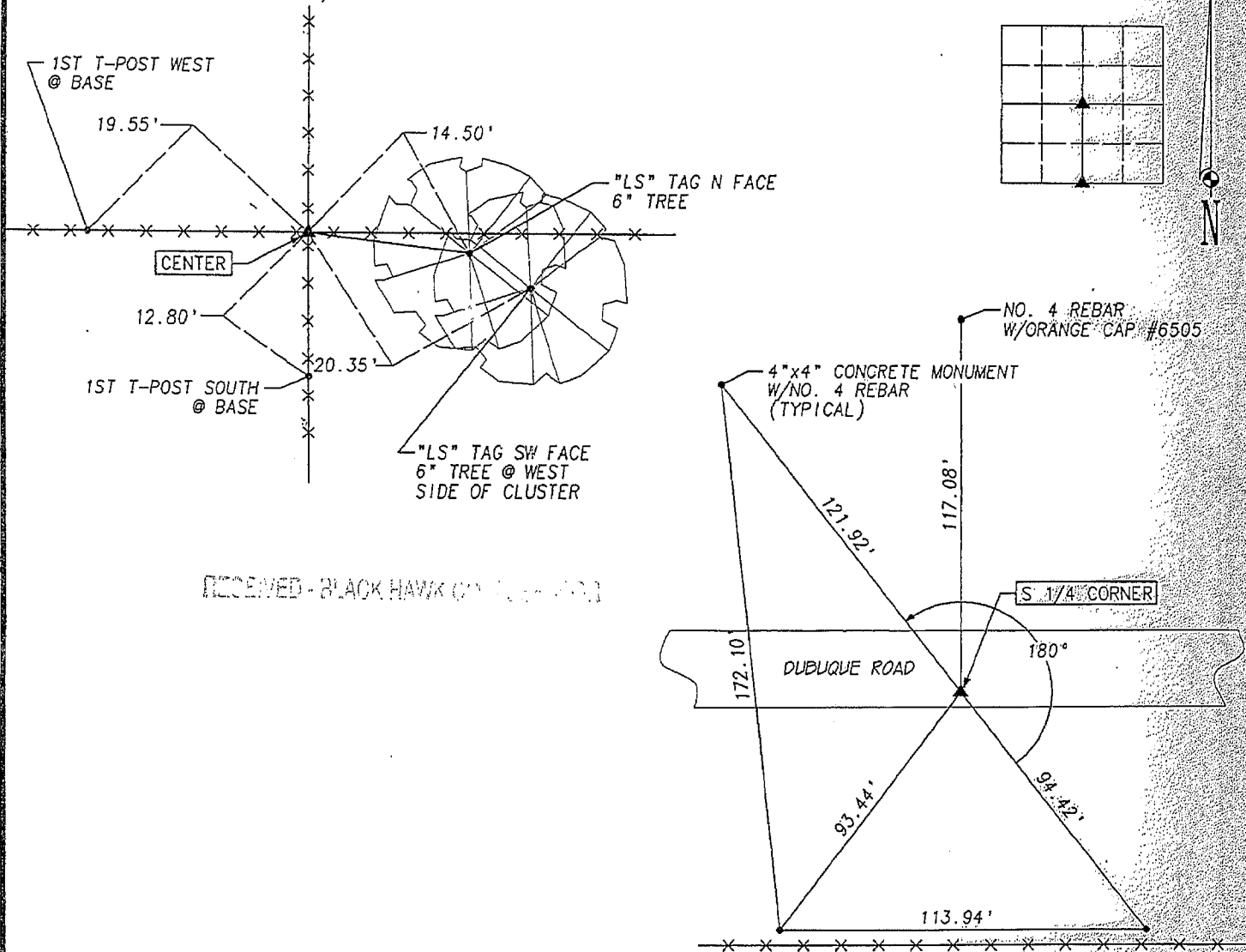
SURVEY DONE IN SW 1/4 OF SEC. 32-T89N-R11W

CENTER: FOUND 0.2' DIA. STEEL CORNER POST (LEANING WLY), FENCE RUNNING N,S,W & E (USED CENTER OF BASE OF POST AT GROUND LEVEL)

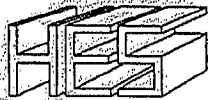
S 1/4 CORNER: FOUND 0.4' DIA. HOLE 0.3' DEEP CUT IN A.C.C. OVERLAY WITH P.C.C. BENEATH. I.D.O.T. MARKER WAS MISSING. POURED P.C.C. IN HOLE AND SET MAG NAIL FROM TIES MONUMENTS 7.0 SOUTH OF CENTERLINE DUBUQUE ROAD

PLAN VIEW

(SHOW A MINIMUM OF THREE REFERENCE TIES TO DURABLE PHYSICAL OBJECTS, RELEVANT MONUMENTS AND PHYSICAL CONDITIONS THAT WILL ENABLE RECOVERY OF THE CORNER.)



RECEIVED - BLACK HAWK COUNTY IOWA



HELLAND ENGINEERING & SURVEYING, LTD.
1107 Technology Parkway
Cedar Falls, Iowa 50613-6951
(319)-266-0161



I hereby certify that this land surveying document was prepared and the related survey work was performed by me or under my direct personal supervision and that I am a duly licensed Land Surveyor under the laws of the State of Iowa.

Paul H. Helland 7/21/99
Paul H. Helland
License Number 6505
My license renewal date is December 31, 1999.
All pages or sheets are covered by this seal except:

LIST CORNERS TO BE INDEXED			
CORNER	SECTION	TOWNSHIP	RANGE
CENTER	32	89N	11W
S 1/4 CORNER	32	89N	11W