

INDEX

BLACK HAWK COUNTY, IOWA:SS

FEE BOOK # 2006 13150

PROOF

FILED FOR RECORD NOV 21 2005 AT 10:00 A.M. FEE 1-5.00-1.00/X

COMPARED

Kirk D. Eschliman

BLACK HAWK COUNTY RECORDER

KESS & ASSOCIATES INC

Kirk D. Eschliman, P.L.S. Iowa Lic. No. 9961, 723 Broadway Street, Waterloo, Iowa 50703 - Phone: 319-234-0509

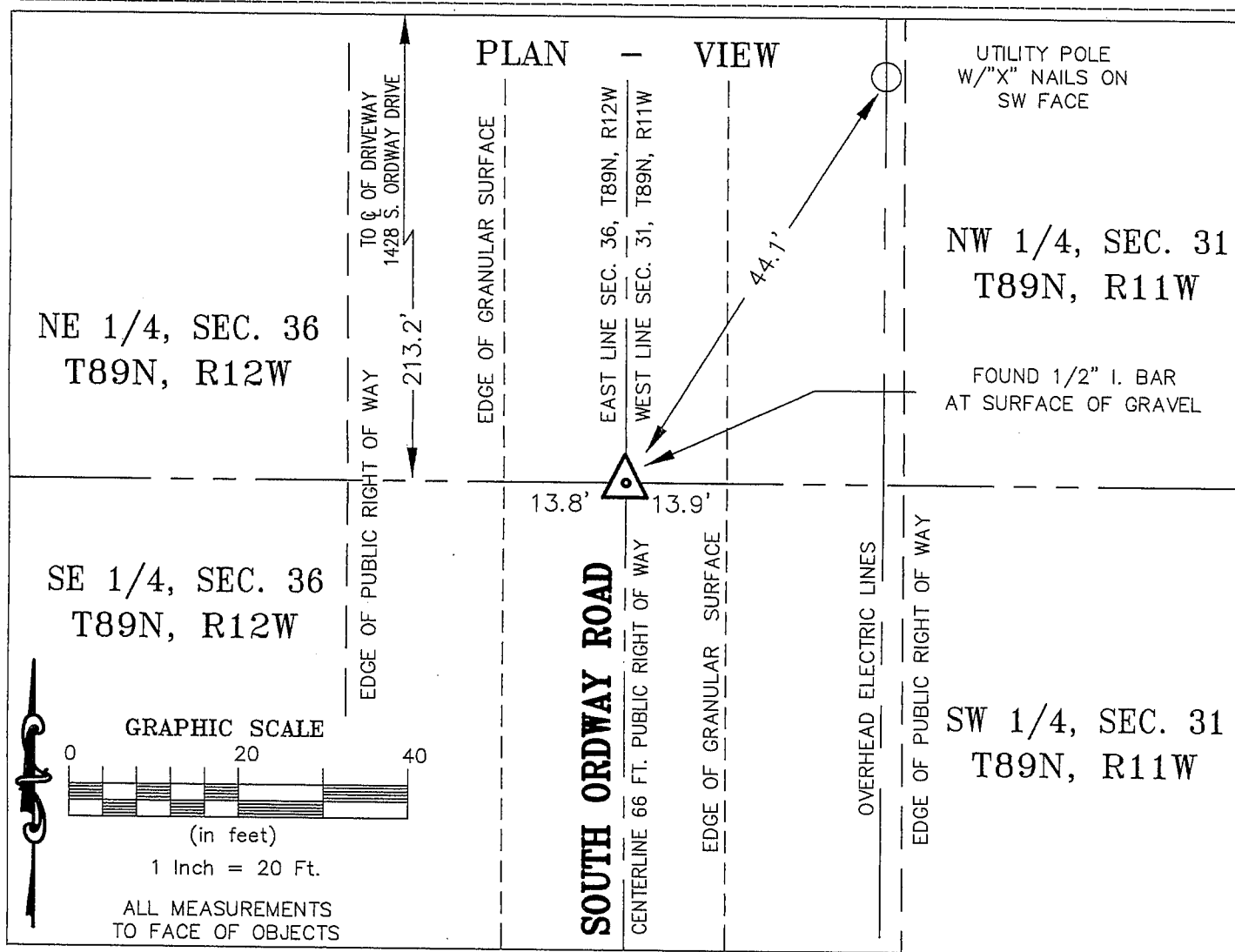
UNITED STATES PUBLIC LAND SURVEY CORNER CERTIFICATE
OFLAND SURVEY MONUMENTS SITUATED IN SECTION THIRTY-ONE (31), TOWNSHIP EIGHTY NINE (89) NORTH
RANGE ELEVEN (11) WEST, OF THE FIFTH PRINCIPAL MERIDIAN, BLACK HAWK COUNTY, IOWA.
PREVIOUSLY RECORDED IN (NOT PREVIOUSLY RECORDED) (BOOK, PAGE, DOCUMENT NUMBER, ETC.) IN THE COUNTY RECORDER'S OFFICE.

(SHOW REASON FOR PREPARING THIS CERTIFICATE, THE EVIDENCE AND DETAILED PROCEDURES USED IN ESTABLISHING THE CORNER POSITIONS AND MONUMENTATION FOUND OR PLACED.)

MONUMENT DESCRIPTION AND REMARKS:

CURRENT SECTION CORNER CERTIFICATE NOT ON FILE IN THE BLACK HAWK COUNTY ENGINEER'S OFFICE

FOUND 1/2" IRON BAR AT SURFACE OF GRANULAR SURFACED SOUTH ORDWAY ROAD.

I HEREBY CERTIFY THAT THIS LAND SURVEYING DOCUMENT
WAS PREPARED AND RELATED SURVEY WORK WAS
PERFORMED BY ME OR UNDER MY DIRECT PERSONAL
SUPERVISION AND THAT I AM A DULY LICENSED LAND
SURVEYOR UNDER THE LAWS OF THE STATE OF IOWA.*Kirk D. Eschliman* DATE: 11/16/2005KIRK D. ESCHLIMAN, P.L.S. IOWA LIC. NO. 9961
MY LICENSE RENEWAL DATE IS DECEMBER 31, 2005
PAGES OR SHEETS COVERED BY THIS SIGNATURE & SEAL: SHEET 1 OF 1FOR: CRAIG J. & SHERRY L. BECKER
1235 SOUTH ORDWAY ROAD
WATERLOO, IOWA 50703REQ. BY: CRAIG J. BECKER
WATERLOO, IOWAKESS & ASSOCIATES, INC.
PROFESSIONAL LAND SURVEYORS : 723 BROADWAY, WATERLOO, IOWA 50703-5811
DATE: 11/11/2005 C.A.D.D. FILE: 05C53SCC1.DWG PROJECT NO.: 05C53

List of corners to be indexed:

Corners	Section	Township	Range
W 1/4	31	T89N	R11W

