

PREPARED BY: BLACK HAWK COUNTY ENGINEERS OFFICE
316 E. FIFTH STREET, ROOM 211 WATERLOO, IOWA 50703

PH.# (319) 833-3008
FAX.# (319) 833-3139
SLSI 9-94
BHCO 03-09

UNITED STATES PUBLIC LAND SURVEY CORNER CERTIFICATE OF
Land Survey Monuments situated in Section 31, Township 89 N,
Range 11 W, of the Fifth Principal Meridian, BLACK HAWK County, Iowa.
Previously recorded in FEE Book 2004, Page 21615, in County Recorder's Office.

(Show reason for preparing this certificate): The corner monument has been Replaced or Modified, per Ia. Code 355.11(1)(c)

(Evidence and detailed procedures used in establishing the corner position(s) and monumentation found or placed.)

Monument Description and Remarks: S. 1/4 COR. FOUND 2 1/2" Ø I.D.D.T. ALUM. CAP
STABLE IN ACC CORE HOLE (±5" Dp. ACC OVERLAYED PCC PAVEMENT) PER CURRENT
RECORD. DOWN ±5" IN CORE HOLE TO FOUND LEAD PLUG IN PCC PAVEMENT. TEMP. REF.
CORNER w/RTK GPS (TWO LINE w/WT. AVG.), AND MILLED 2" EXIST. ACC OVERLAY &
ADDED 5" H.M.A. OVERLAY. REFER TO UPDATED RECORD FOR N. 1/4 COR. SECT. 01-T88-R12
FOR 1955 IA. D.D.T. PAVING PLAN DETAILS FOR HISTORICAL REFERENCE. BHCO. HIST. TIES
(REF. NOTED) SHOW ONLY REFERENCE TO "R/W FENCE" @ 62.6' N. & 77.5' S. OF CORNER.
SAID 1955 PAVING PLANS DETAIL COR. @ 1.6' RT. (S.) OF C.L. RD. GEOM. AS "FOUND CONC.
MONUMENT". CORNER RESET WITH #5 (5/8") x ±7" L. REBAR PER RTK GPS REF., & LOC.
AT 1.83' S. OF NEW PAVING JOINT, BEING ALIGNED @ ±1.5' WEST OF FNC. TO NORTH.

NOTE: ALL DISTANCES PLUMB/HORIZ.
(H.D.), "UNLESS DENOTED".

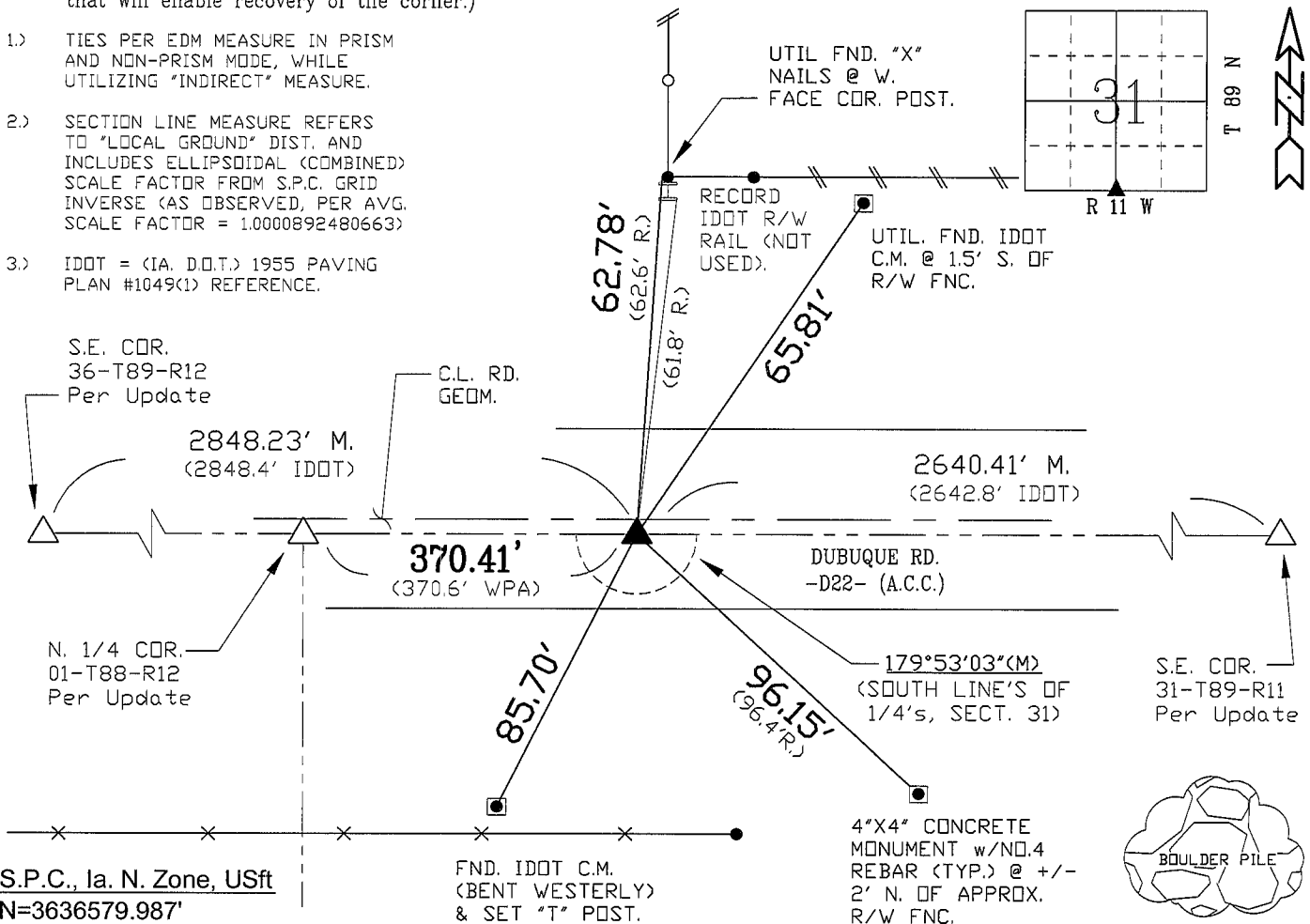
PLAN VIEW

"NOT TO SCALE"

BHco Hist. Ties: BK. #1002 p.31 89-11
FIELD BOOK: BHco. #488 p.45 (#1003)

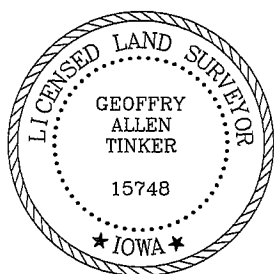
(Show a minimum of three reference ties to durable physical objects, relevant monuments and physical conditions
that will enable recovery of the corner.)

- 1.) TIES PER EDM MEASURE IN PRISM
AND NON-PRISM MODE, WHILE
UTILIZING "INDIRECT" MEASURE.
- 2.) SECTION LINE MEASURE REFERS
TO "LOCAL GROUND" DIST. AND
INCLUDES ELLIPSOIDAL (COMBINED)
SCALE FACTOR FROM S.P.C. GRID
INVERSE (AS OBSERVED, PER AVG.
SCALE FACTOR = 1.0000892480663)
- 3.) IDOT = (IA. D.D.T.) 1955 PAVING
PLAN #1049(1) REFERENCE.



FIELD SURVEY: G.T. & J.Z. & D.B. 06/23/09
PREPARED BY: G.T. & J.Z. & D.B. 9/23/09

CERTIFICATION



I hereby certify that this land surveying document
was prepared and the related survey work was
performed by me or under my direct personal
supervision and that I am a duly licensed Land
Surveyor under the laws of the State of Iowa.

Geoffrey Allen Tinker 09/23/2009
Geoffrey Allen Tinker (date)

License Number 15748

My license renewal date is December 31, 2010

Pages or sheets covered by this seal:

This Land Corner Certificate Only.

LIST CORNERS TO BE INDEXED

| Corner | Section - | Township - | Range |
|-------------|-----------|------------|-------|
| S. 1/4 Cor. | 31 | 89 N | 11 W |

INDEX OF ABBREVIATIONS

(M) = "Measured" Dimension
(P) = "Platted" Dimension
(R) = "Record" Dimension
(C) = "Calculated" Dimension
(G) = Iowa Geodetic Survey
(WPA) = Works Progress Admin. Survey
(G) = per George Miller Survey (BHco Surveyor 1858-1860)
(B) = per John Ball Survey (BHco Surveyor 1866-1891)
(N) = per Nathan Barber Survey (BHco Surveyor 1908-1931)
"NP" = Reflectorless EDM Meas.
"MLM" = Indirect Measure
"CM" = Concrete Monument
"SM" = Survey Marker Spike/Tag
"PK" = PK/MAC Nail Brand Style