

UNITED STATES PUBLIC LAND SURVEY CORNER CERTIFICATE

OF

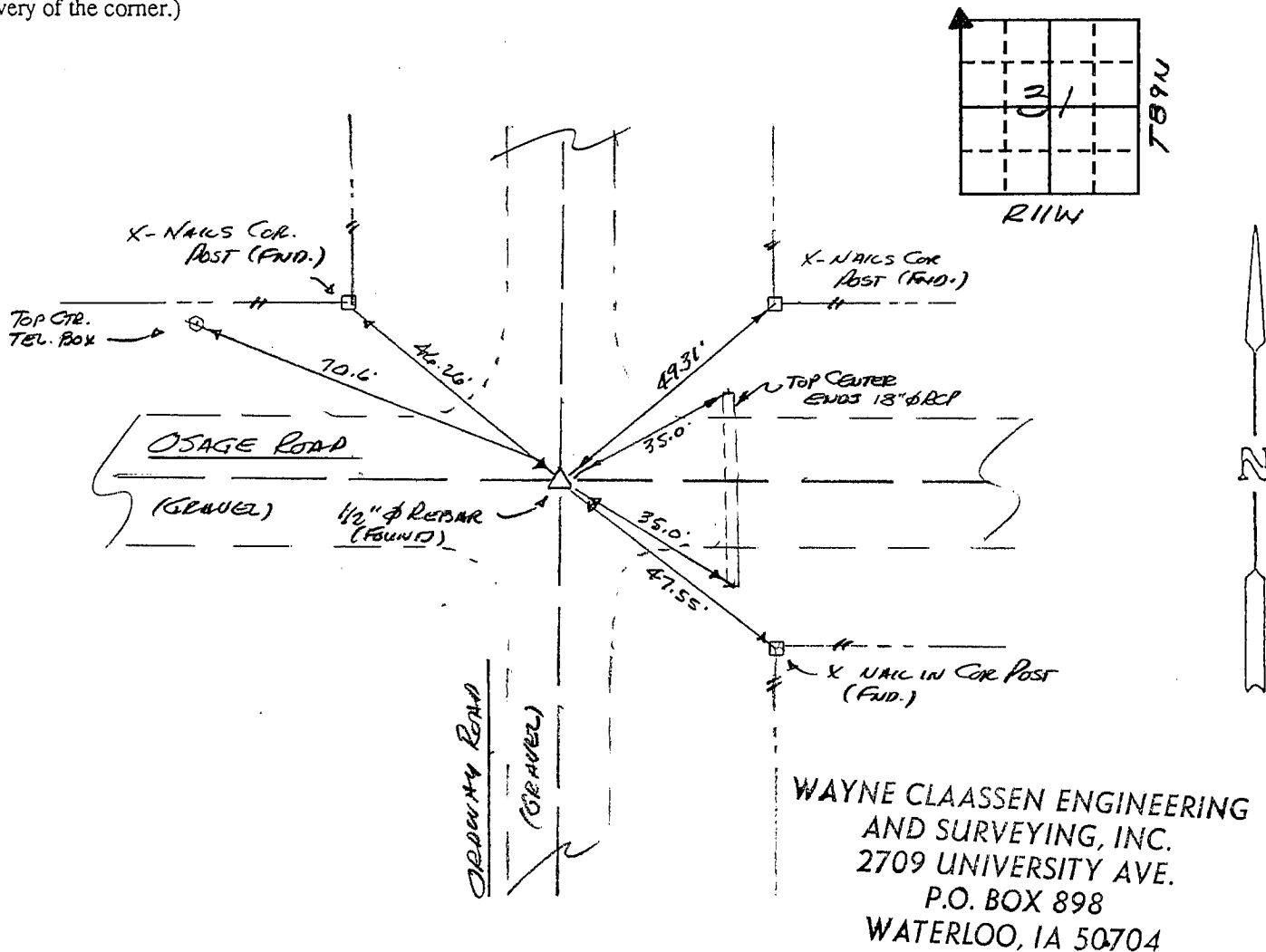
Land Survey Monuments situated in Section 31, Township 89N, Range 11W, of the Fifth Principal Meridian, BLACK HAWK County, Iowa. Previously recorded in N/A in County Recorder's Office.

(book, page, document number, etc.)  
(Show reason for preparing this certificate, the evidence and detailed procedures used in establishing the corner positions and monumentation found or placed.)

Monument Description and Remarks: FOUND 1/2" Ø REBAR USING CES TIES OF 10-1983  
SCM WAS FOUND 1.3' DEEP IN 1983 & 1/2" Ø BAR SET OVER AT THAT TIME.

PLAN - VIEW

(Show a minimum of three reference ties to durable physical objects, relevant monuments and physical conditions that will enable recovery of the corner.)



203-7

I hereby certify that the survey work was completed and this certificate was prepared by me or under my direct personal supervision and that I am a duly registered land surveyor under the laws of the state of Iowa.

Signature: \_\_\_\_\_  
Name typed or printed: F. WILLIAM KING  
Date: 3-28-1994 Reg. No. 8033



Corners	List Corners to be Indexed		
	Section	Twp	Range
<u>NW</u>	<u>31</u>	<u>89N</u>	<u>11W</u>
<u>NE</u>	<u>36</u>	<u>89N</u>	<u>12</u>

MISC. BK. 310 p. 427