

File **2009-00012548**

# UNITED STATES PUBLIC LAND SURVEY CORNER CERTIFICATE OF

LAND SURVEY MONUMENTS SITUATED IN SECTION NO. 31, TOWNSHIP NO. 89 NORTH, RANGE  
NO. 11 WEST OF THE FIFTH PRINCIPAL MERIDIAN, BLACK HAWK COUNTY, IOWA.  
PREVIOUSLY RECORDED IN N/A

(SHOW REASON FOR PREPARING THIS CERTIFICATE, THE EVIDENCE AND DETAILED PROCEDURES USED IN ESTABLISHING THE CORNER POSITIONS AND MONUMENTATION FOUND OR PLACED.)

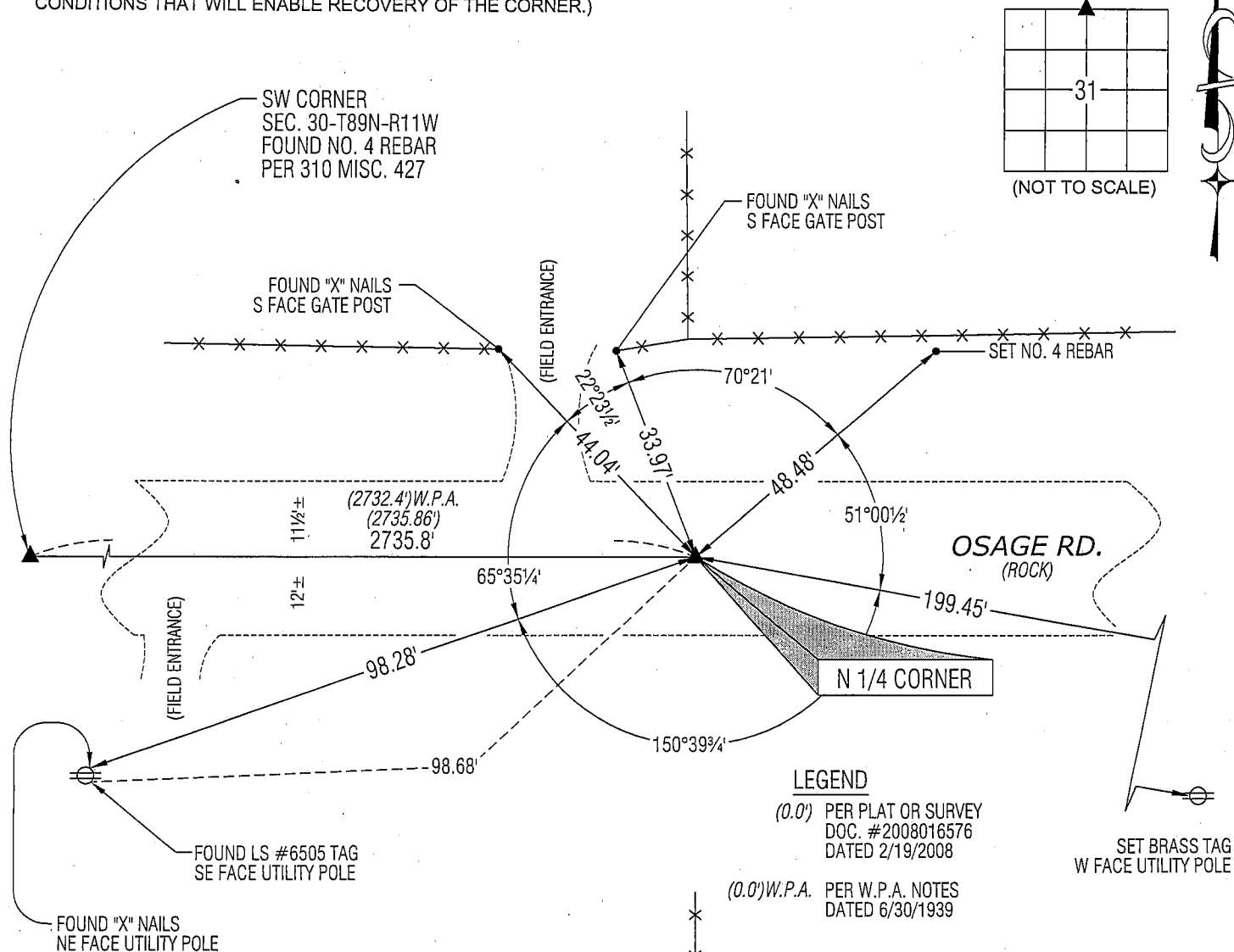
MONUMENT DESCRIPTION AND REMARKS:

NO USPLSCC ON FILE. SURVEY COMPLETED IN THE SW FRL 1/4 SW FRL 1/4 OF SEC. 31-T89N-R11W.

→ **N 1/4 CORNER:** W.P.A. NOTES DATED 6/30/1939 CALL FOR [FOUND LIMESTONE 16" x 7" x 5" IRON BAR 1/2" x 19 1/2" ROUND REMNANT OF OLD OAK HUB LOWERED EVIDENCE AND SET C.M. ON TOP 12" DEEP.] FOUND STD. CONCRETE MONUMENT w/BRASS CAP 0.5' DEEP w/MAGNETIC READING ON NORTH SIDE.

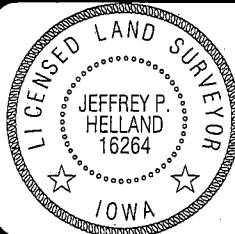
## PLAN VIEW

(SHOW A MINIMUM OF THREE REFERENCE TIES TO DURABLE PHYSICAL OBJECTS, RELEVANT MONUMENTS AND PHYSICAL CONDITIONS THAT WILL ENABLE RECOVERY OF THE CORNER.)



**HELLAND ENGINEERING & SURVEYING, LTD.**  
1107 Technology Parkway  
Cedar Falls, Iowa 50613-6951  
(319)-266-0161

SHINER = 8D NAIL & 1 5/16"Ø METAL SHINER  
BRASS TAG = 13/16"Ø BRASS TAG  
OPC = PLASTIC CAP (O=ORANGE, R=RED, Y=YELLOW)  
(00') RECORDED AS FILE NAME: 08-348C2.DWG



I hereby certify that this land surveying document was prepared and the related survey work was performed by me or under my direct personal supervision and that I am a duly licensed Land Surveyor under the laws of the State of Iowa.

Subject of the laws of the State of Iowa.  
*Jeffrey P. Hellard* 1/5/09  
 Jeffrey P. Hellard  
 License Number 16264  
 My license renewal date is December 31, 2009.  
 All pages or sheets are covered by this seal except:

## LIST CORNERS TO BE INDEXED

CORNER	SECTION	TOWNSHIP	RANGE
N 1/4 CORNER	31	89N	11W
S 1/4 CORNER	30	89N	11W

Rec.