

BLACK HAWK COUNTY ENGINEER

PREPARED BY: BLACK HAWK COUNTY ENGINEERS OFFICE
316 E. FIFTH STREET, ROOM 211 WATERLOO, IOWA 50703

PH.# (319) 291-2419 SLSI 9-94
FAX.# (319) 291-2461 CERT 12-96

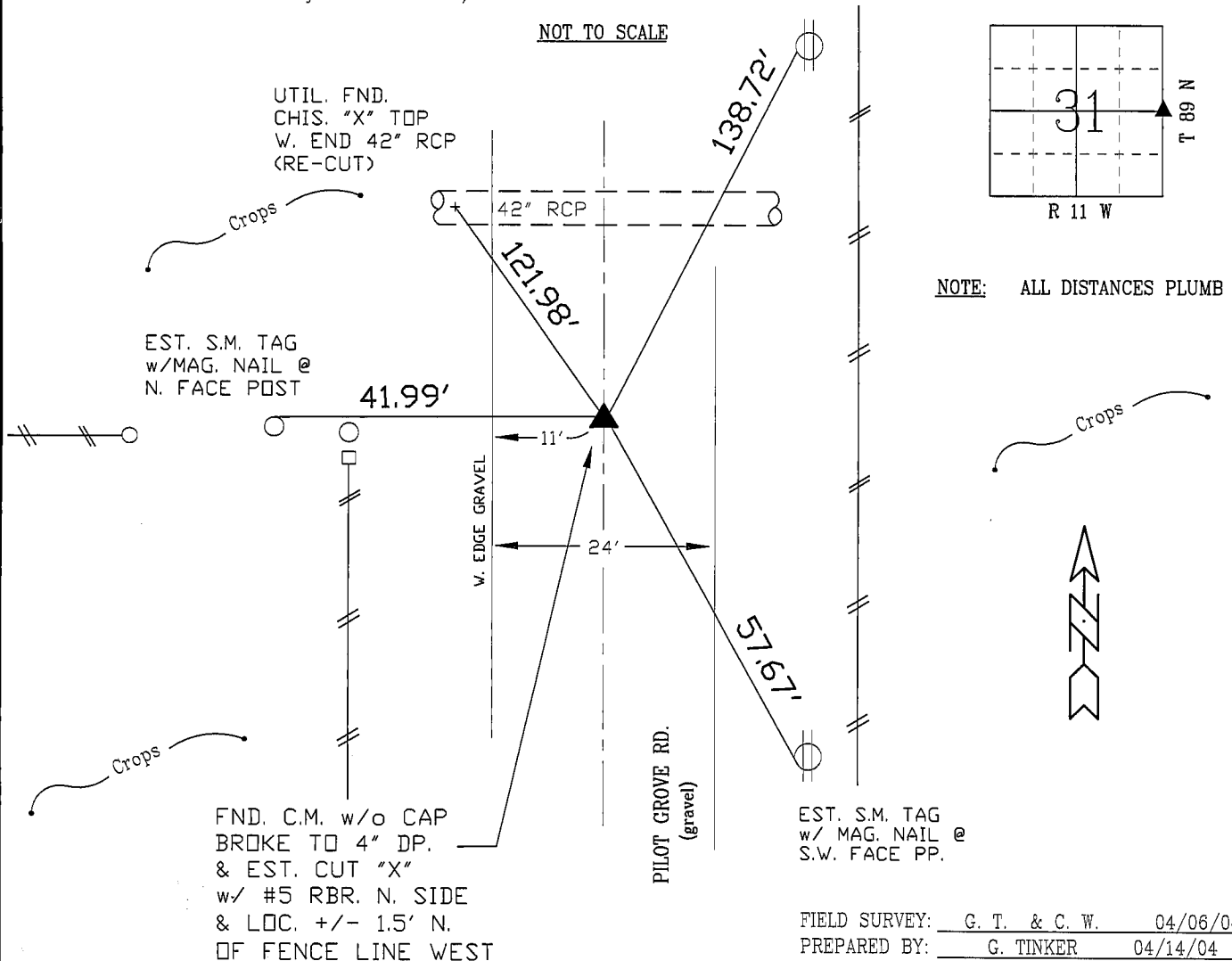
UNITED STATES PUBLIC LAND SURVEY CORNER CERTIFICATE OF
Land Survey Monuments situated in Section 31, Township 89 N,
Range 11 W, of the Fifth Principal Meridian, BLACK HAWK County, Iowa.
Previously recorded in Misc. Book n/a, Page n/a, in County Recorder's Office.

(Show reason for preparing this certificate, the evidence and detailed procedures used in establishing the corner positions and monumentation found or placed.)

Monument Description and Remarks: FOUND STD. WPA C.M. WITH TOP OFF
LOC. JUST ABOVE ROAD SURFACE, WITH 1" PINCHED PIPE (BENT) ALONG N.
FACE OF MONUMENT. PULLED PIPE AND TOPPED OFF C.M. TO 4" DEEP THEN
EST. CUT "X" IN TOP OF C.M., RETIED, AND SET 32"L. x #5 RBR. ALONG
N. FACE OF C.M. (BELOW TOP) FOR MAG. LOCATION. CORNER FILED TO LOWER
BELOW ROAD SURFACE AND UPDATE PUBLIC RECORD.

PLAN - VIEW

(Show a minimum of three reference ties to durable physical objects, relevant monuments and physical conditions that will enable recovery of the corner.)



CERTIFICATION



I hereby certify that this land surveying document was prepared and the related survey work was performed by me or under my direct personal supervision and that I am a duly licensed Land Surveyor under the laws of the State of Iowa.

Geoffrey Allen Tinker 04/14/04 (date)
Geoffrey Allen Tinker

License Number 15748

My license renewal date is December 31, 2004

Pages or sheets covered by this seal:

This Land Corner Certificate Only.

LIST CORNERS TO BE INDEXED

Corner	Section	Township	Range
E. 1/4	31	89 N	11 W
W. 1/4	32	89 N	11 W