



Doc ID: 006802990001 Type: GEN
Recorded: 07/02/2015 at 08:55:49 AM
Fee Amt: \$7.00 Page 1 of 1
Black Hawk County Iowa
SANDIE L. SMITH RECORDER

File 2016-00000193

PREPARED BY / RETURN TO: KENNETH D. STARK IOWA DEPARTMENT OF TRANSPORTATION 1420 4th ST. SE MASON CITY, IA 50401 641-423-7584

ENV UNITED STATES PUBLIC LAND SURVEY CORNER CERTIFICATE
OF

Land Survey Monuments situated in Section 30, Township 89N, Range 11W
of the Fifth Principal Meridian, BLACK HAWK County, Iowa.

Previously recorded in Book 0340, Page 897 - Doc. No. 2007020177 in County Recorder's Office.
(book, page, document number, etc.)

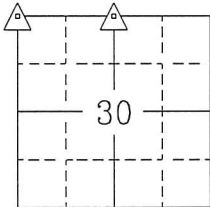
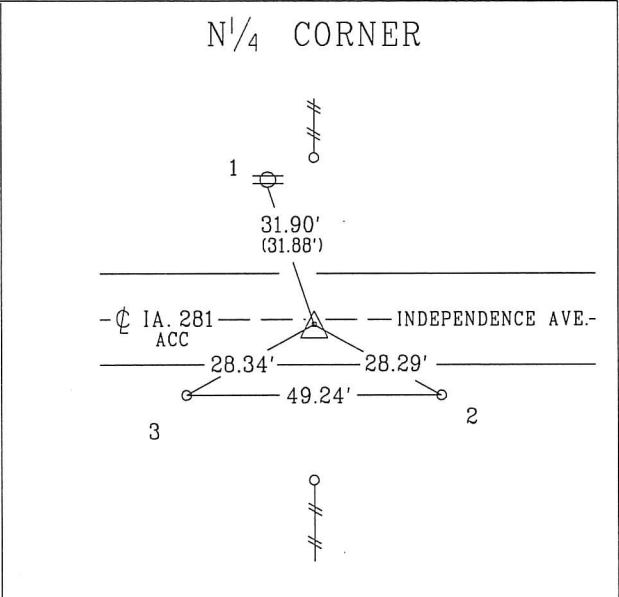
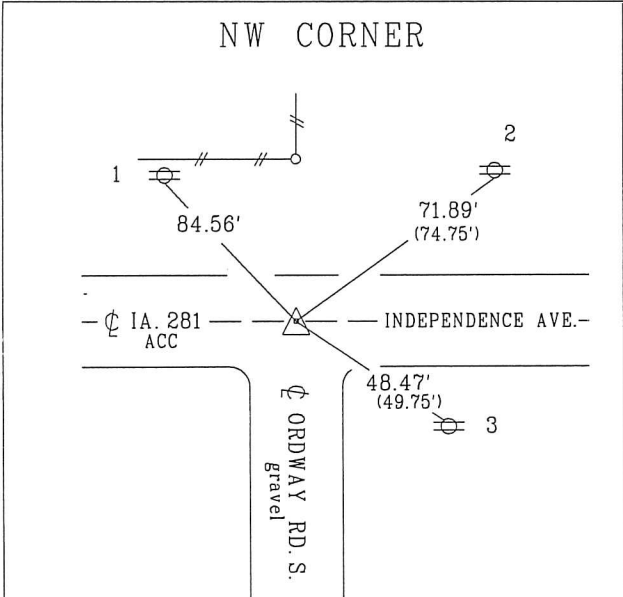
(Show reason for preparing this certificate, the evidence and detailed procedures used in establishing the corner positions and monumentation found or placed.)

Monument Description and Remarks: NW CORNER: Replaced previously found 5/8" rebar with a Survey Mark Nail/IDOT Sec. Cor. washer #10898 on $\frac{1}{4}$ IA. 281 using previous cert of record Book 0340, Page 897 after HMA resurfacing project. Reason for cert: Monumentation and ties have changed and updating IDOT records.

N $\frac{1}{4}$ CORNER: Replaced previously found 5/8" rebar/ 2" alum cap #9961 with a Survey Mark Nail/IDOT Sec. Cor. washer #10898, 0.6' South $\frac{1}{4}$ IA. 281 using previous cert of record Doc. No. 2007020177 after HMA resurfacing project. Reason for cert: Monumentation and ties have changed and updating IDOT records.

PLAN - VIEW

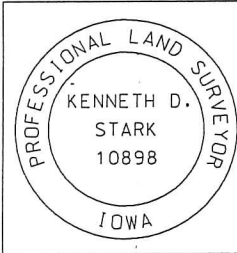
(Show a minimum of three reference ties to durable physical objects, relevant monuments and physical conditions that will enable recovery of the corner.)



N

△ = Survey Mark Nail/IDOT Sec. Cor. washer #10898
1 = Set "X" nails South side power pole
2 = Found "X" nails South side power pole
3 = Found "X" nails Northwest side power pole

△ = Survey Mark Nail/IDOT Sec. Cor. washer #10898
1 = Found "X" nails South side power pole
2 = Set 5/8" rebar/PPC 2' +/- S. of E.O.S. 0.3' +/- deep
3 = Set 5/8" rebar/PPC 2' +/- S. of E.O.S. 0.3' +/- deep



I hereby certify that this land surveying document was prepared and the related survey work was performed by me or under my personal supervision and that I am duly licensed Land Surveyor under the laws of the state of Iowa.
Kenneth D. Stark Date 06-30-15
License number 10898
My License renewal date is December 31, 2015
Pages or sheets covered by this seal. 1

List Corners to be Indexed

Corner	Section	Township	Range
NW CORNER	30	89N	11W
N $\frac{1}{4}$ CORNER	30	89N	11W

PPC = Pink Plastic Cap (reference point)
E.O.S. = Edge of slab

drawn by: c/s 3/13

07-30-89-11

tied by: me,cs
right-of-way