

STATE OF IOWA, COUNTY OF BLACK HAWK, SS:
I, Judith A. McCarthy, Recorder of said County, hereby
certify that this is a true copy of the official document
as recorded in the Recorder's Office in Book and
Page or Document No. 2013-00017225

Doc ID: 005066370003 Type: GEN
Kind: CORNER
Recorded: 02/18/2013 at 10:58:28 AM
Fee Amt: \$17.00 Page 1 of 3
Black Hawk County Iowa
JUDITH A MCCARTHY RECORDER

2-19-13
(DATE) Judith A. McCarthy
(Recorder)

File **2013-00017225**

Zeb J. Stanbrough PLS, Ryken Engineering, 739 Park Avenue, Ackley, Iowa 50601 - Ph. 641-847-3273 - Fax 641-847-2303

UNITED STATES PUBLIC LAND SURVEY CORNER CERTIFICATE OF

Land Survey Monuments situated in Section 30, Township 89 North,
Range 11 West, of the Fifth Principal Meridian, Black Hawk County, Iowa,
Previously recorded in (see below) in County Recorder's Office

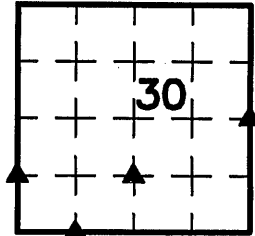
E $\frac{1}{4}$ Cor. - #2008016233

SW Cor. SE $\frac{1}{2}$ FrSW $\frac{1}{4}$ - Not Applicable

NW Cor. FrS $\frac{1}{2}$ FrSW $\frac{1}{4}$ - Not Applicable

NE Cor. FrS $\frac{1}{2}$ FrSW $\frac{1}{4}$ - Not Applicable

These corners were used for a survey in this section for Alen H. Nagel, Jeremie H. Nagel and Rebecca Nagel and not recorded at the date of survey, which was recently brought to this surveyor's attention. Basis of bearing for this corner cert. can be found on the associated plat of survey filed in the County Recorder's Office for this section.



Legend

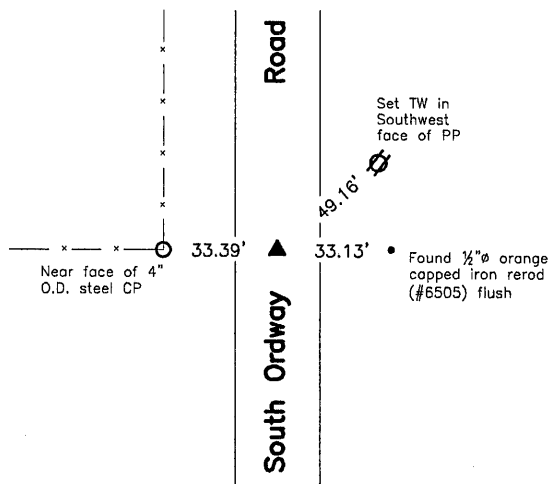
BC = Nail with Bottle Cap
BP = Brace Post
CP = Corner Post
CMP = Corrugated Metal Pipe
CM = 4" Sq Concrete Monument with
1/2"Ø iron rod in center (tie to rod)
CX = Cut 'X'
GP = Gate Post

ID = Inside Diameter
OD = Outside Diameter
PP = Power Pole
PW = Nail with Plastic Washer
RCP = Reinforced Concrete Pipe
RH = Red Head (Nail in wire)
ROW = Right of Way
RW = Nail with Reflective Round Washer

R/W = Iron ROW Rail
SFP = Steel 'T' Post
SW = Nail with Square Metal Washer
TP = Telephone Pedestal
TW = Nail with Round Metal Washer
WFP = Wood Fence Post
X = X Nails



NW Cor. FrS $\frac{1}{2}$ FrSW $\frac{1}{4}$



NW Cor. FrS $\frac{1}{2}$ FrSW $\frac{1}{4}$ - History of Corner =

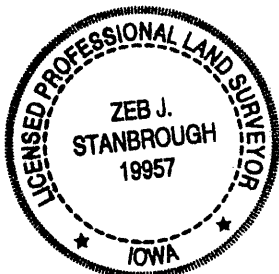
1995, May 15 - County Recorder's Miscellaneous Book 315, Page 725 indicates usage of corner but not type of monumentation at corner by Paul H. Helland.

Previous and current County Engineer's ties do not indicate that corner is monumented.

Corner Recovery =

Searched a 10.0'Ø area around the equidistance point between the SW Corner and the W $\frac{1}{4}$ Corner with metal detector, excavated 1.0'Ø x 0.3' deep hole and found 1" O.D. x 2.0' iron pipe (bent), 0.2' deep. Tied out straight portion of pipe, removed, searched area again with metal detector and found no nothing. Searched with tile probe down at pipe location to 4.0'± deep and found nothing. Monument found is in apparent centerline of traveled surface of gravel road North-South and 2.0'± South of fenceline West. Corner appears to have been established using accepted PLSS methods. Therefore, set a 3/4"Ø x 4.0' aluminum capped iron rod (#19957), 0.2' deep at pipe location to perpetuate monumentation and used rod as the correct corner. All ties are plumb distance unless indicated otherwise.

This certificate is being prepared because there are no certificates on file for this corner.



I hereby certify that this land surveying document was prepared and the related survey work was performed by me or under my direct personal supervision and that I am a duly licensed Land Surveyor under the laws of the State of Iowa.

Zeb J. Stanbrough, PLS

Date: 2-14-2013 License number: 19957

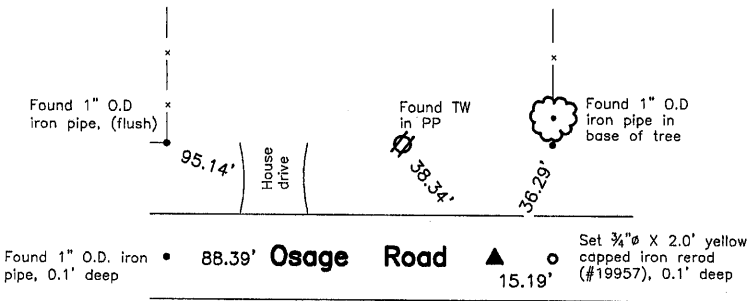
My license renewal date is December 31, 2013

Pages or sheets covered by this seal: 1, 2, & 3

Corners to be Indexed

Corners	Section	Twp	Range
NW Cor. FrS $\frac{1}{2}$ FrSW $\frac{1}{4}$	30	T89N	R11W
SW Cor. SE $\frac{1}{2}$ FrSW $\frac{1}{4}$	30	T89N	R11W
E $\frac{1}{4}$ Cor.	30	T89N	R11W
NE Cor. FrS $\frac{1}{2}$ FrSW $\frac{1}{4}$	30	T89N	R11W

SW Cor. SE¼ FrSW¼



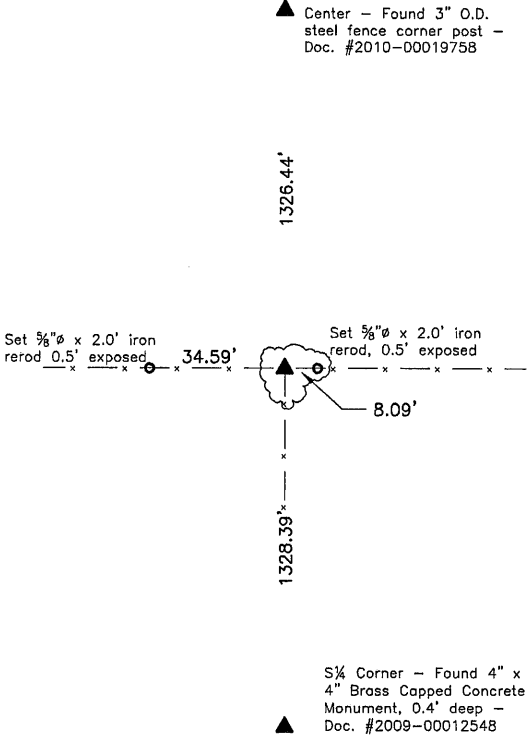
SW Cor. SE¼ FrSW¼ - History of Corner =
1916, Apr. 6 - "S" per County Auditor's Surveyor's Record Book 1, Page 66.

Previous and current County Engineer's ties do not indicate that corner is monumented.

Corner Recovery =
Searched a 10.0'Ø area around a point at record distance from the S¼ Corner (per 1916 survey) with metal detector, excavated 1.0'Ø x 0.5' deep hole and found 1" O.D. iron pipe, 0.2' deep. Searched with tile probe on all sides of pipe to 4.0'± deep and found nothing. Monument found is in apparent centerline of traveled surface of gravel road East-West. Location of monument found matches that of record and corner appears to have been established using accepted PLSS methods. Therefore, used pipe as the correct corner. All ties are plumb distance unless indicated otherwise.

This certificate is being prepared because there are no certificates on file for this corner.

NE Cor. FrS¼ FrSW¼



NE Cor. FrS¼ FrSW¼ - History of Corner =
No available records indicate that corner was ever monumented.

Corner Recovery =
Searched a 10.0'Ø area around the equidistance point between the S¼ Corner and the Center with metal detector and found nothing. Excavated a 3.0'Ø x 2.0' deep hole at said equidistance point and found a 1½" (North-South) x 8" (East-West) x 5" tall cut limestone, 1.5' deep (upright and well nested) under a large granite rock pipe. Tied out high point limestone, removed and found no other monumentation. Monument found is in-line with fencelines South-East-West and 1.0'± North of broken corner post for fence South. Although, there is no record of limestone at this corner, limestone is a typical and uncommon stone in this section, this limestone is different to the other stones in this area and limestones are known survey monuments for section corners. Therefore, set a ¾" x 4.0' aluminum capped iron rod, (#19957), 1.0' exposed at high point of limestone location to perpetuate monumentation and used rod as the correct corner. All ties are plumb distance unless indicated otherwise.

This certificate is being prepared because there are no certificates on file for this corner.

Legend

- | | | |
|---|--|------------------------------------|
| BC = Nail with Bottle Cap | ID = Inside Diameter | R/W = Iron ROW Rail |
| BP = Brace Post | OD = Outside Diameter | SFP = Steel 'T' Post |
| CP = Corner Post | PP = Power Pole | SW = Nail with Square Metal Washer |
| CMP = Corrugated Metal Pipe | PW = Nail with Plastic Washer | TP = Telephone Pedestal |
| CM = 4" Sq Concrete Monument with | RCP = Reinforced Concrete Pipe | TW = Nail with Round Metal Washer |
| 1/2"Ø iron rod in center (tie to rerod) | RH = Red Head (Nail in wire) | WFP = Wood Fence Post |
| CX = Cut 'X' | ROW = Right of Way | X = X Nails |
| GP = Gate Post | RW = Nail with Reflective Round Washer | |



