

SC
INDEX
MARGIN
PROOF
COMPARE

BLACK HAWK COUNTY IOWA: SS 7248
Filed for record Sep 28, 1998, at
4:00 P.M. and recorded in Book 331
of Misc Page 710.
Recorder
Fee n/c
ENGINEER'S OFFICE

County Assessor

PREPARED BY: BLACK HAWK COUNTY ENGINEERS OFFICE
316 E. FIFTH STREET, ROOM 211 WATERLOO, IOWA 50703

PH# (319) 291-2419
FAX# (319) 291-2461
SLSI 9-94
CERT 12-96

UNITED STATES PUBLIC LAND SURVEY CORNER CERTIFICATE OF
Land Survey Monuments situated in Section 29, Township 89 N,
Range 11 W, of the Fifth Principal Meridian, BLACK HAWK County, Iowa.
Previously recorded in Misc. Book N/A, Page N/A, in County Recorder's Office.

(Show reason for preparing this certificate, the evidence and detailed procedures used in establishing the corner positions and monumentation found or placed.)

Monument Description and Remarks: EAST 1/4 CORNER SECTION 29-89-11
FOUND LEAD PLUG C.L. P.C.C. PVMT. w/ NO RECORD COUNTY TIES FOUND.
ESTABLISHED 2 PERMANENT TIES PRIOR TO RE-SURFACING, WITH ADDITIONAL
GAS PIPES EST. DURING RE-EST. RE-SET WITH 5/8" REBAR x 6" L. @ A.C.C.
SURFACE. RETIED DUE TO ACC RESURFACING PROJECT.

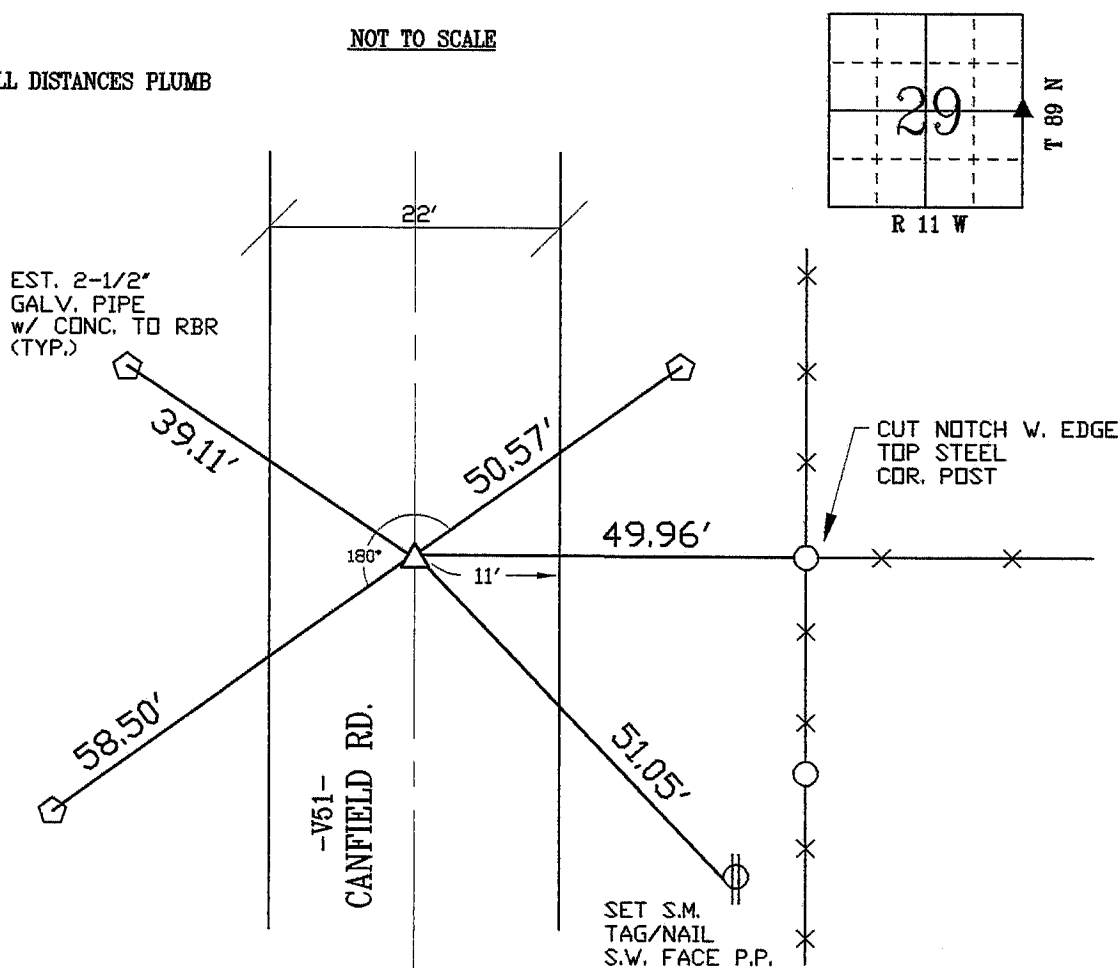
PLAN - VIEW

(Show a minimum of three reference ties to durable physical objects, relevant monuments and physical conditions that will enable recovery of the corner.)



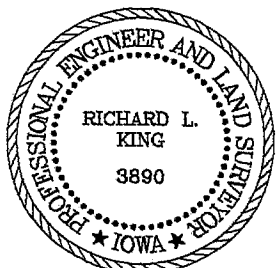
NOT TO SCALE

NOTE: ALL DISTANCES PLUMB



FIELD SURVEY: G.T. & E.G. 07/29/98
PREPARED BY: E.G. & G.T. 09/25/98

CERTIFICATION



I hereby certify that this land surveying document was prepared and the related survey work was performed by me or under my direct personal supervision and that I am a duly licensed Land Surveyor under the laws of the State of Iowa.
Richard L. King (date)
License Number 3890
My license renewal date is December 31, 1999
Pages or sheets covered by this seal:
This Land Corner Certificate Only.

LIST CORNERS TO BE INDEXED

Corner	Section	Township	Range
E. 1/4	29	89 N	11 W

BOOK 331 PAGE 710