

PREPARED BY: BLACK HAWK COUNTY ENGINEERS OFFICE
316 E. FIFTH STREET, ROOM 211 WATERLOO, IOWA 50703

PH.# (319) 833-3008
FAX.# (319) 833-3139
SLST 9-94
BHCO 03-09

UNITED STATES PUBLIC LAND SURVEY CORNER CERTIFICATE OF
Land Survey Monuments situated in Section 28, Township 89 N,
Range 11 W, of the Fifth Principal Meridian, BLACK HAWK County, Iowa.
Previously recorded in Fee Book 2009, Page 015354, in County Recorder's Office.

(Show reason for preparing this certificate): The corner monument has been Replaced or Modified, per Ia. Code 355.11(1)(c)

(Evidence and detailed procedures used in establishing the corner position(s) and monumentation found or placed.)

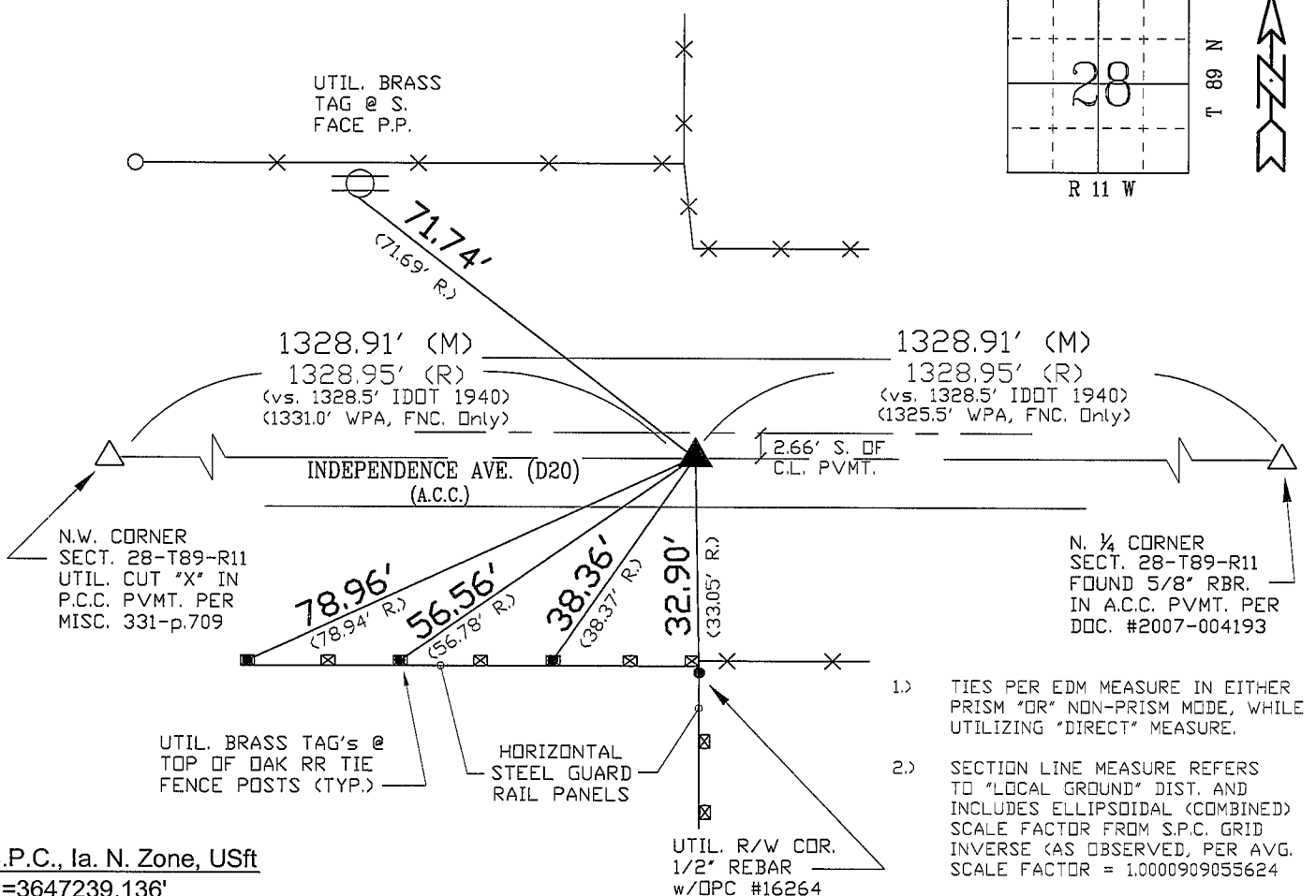
Monument Description and Remarks: N. W 1/16th N COR., EAST:
FOUND "MAG" NAIL PER CURRENT RECORD, PRIOR TO ACC MILLING & HMA RESURFACING.
CORNER IN LINE WITH FENCE RUNNING NORTH, PER RECORD IA. STATE HIGHWAY COMM. LAND
CORNER SURVEY. NO BLACK HAWK COUNTY ENGINEER REFERENCE TIES OF RECORD, ONLY
ISHC LAND CORNER SURVEY DATED 5/14-22/1940 THAT CALLS FOR "SET LEAD PLUG IN
PAVEMENT AT 2.2' SOUTH OF THE CL PAVEMENT, AND ESTABLISHED AT MIDPOINT OF A
STRAIGHT LINE FROM THE NW CORNER TO THE N. 1/4 CORNER" AS ORIGINALLY SET AND PER
CURRENT RECORD. PREV. CORNER TEMP. REFERENCED PER RTK GPS, RESET 5"L. SPIKE w/
WASHER & NOW LOCATED @ 2.66' (±) SOUTH OF CENTERLINE NEW ACC/ HMA PAVING JOINT.
(8" PCC PVM'T. REMAINS UNDER 6" ACC OVERLAY, NO PLUG VERIFIED, NOR ATTEMPTED).

NOTE: ALL DISTANCES PLUMB/HORIZ.
(H.D.), "UNLESS DENOTED".

PLAN VIEW

BHco Hist. Ties: -N/A-
FIELD BOOK: Topcon 7i Std.Meas.

(Show a minimum of three reference ties to durable physical objects, relevant monuments and physical conditions
that will enable recovery of the corner.)



S.P.C., Ia. N. Zone, USft

N=3647239.136'

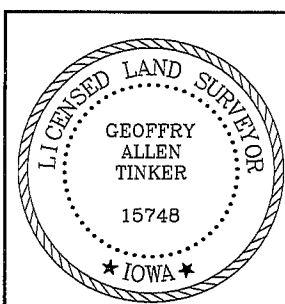
E=5283822.445'

(NAD83) "BHco1994 Net Adj.", RTK Obs.)

FIELD SURVEY: G.T./J.Z./D.B. 06/01/09

PREPARED BY: J.Z. & G.T. 9/2/09

CERTIFICATION



I hereby certify that this land surveying document
was prepared and the related survey work was
performed by me or under my direct personal
supervision and that I am a duly licensed Land
Surveyor under the laws of the State of Iowa.

Geoffrey Allen Tinker 09/09/09
(date)

License Number 15748

My license renewal date is December 31, 2010

Pages or sheets covered by this seal:

This Land Corner Certificate Only.

LIST CORNERS TO BE INDEXED

Corner	Section -	Township -	Range
N.E. Cor.	28	89 N	11 W
NW1/4-NW1/4			

INDEX OF ABBREVIATIONS

(M) = "Measured" Dimension
(P) = "Platted" Dimension
(R) = "Record" Dimension
(C) = "Calculated" Dimension
"IGS" = Iowa Geodetic Survey
"WPA" = Works Progress Admin. Survey
"G" = per George Miller Survey (BHco Surveyor 1858-1860)
"B" = per John Ball Survey (BHco Surveyor 1866-1891)
"N" = per Nathan Barber Survey (BHco Surveyor 1908-1931)
"NP" = Reflectorless EDM Meas.
"MLM" = Indirect Measure
"CM" = Concrete Monument
"SM" = Survey Marker Spike/Tag
"PK" = PK/MAG Nail Brand Style