

PROOF FILED FOR RECORD APR 4, 2005, AT 1:00 P M. FEE 1-5.00X-1.00X

COMPARED

Michael R. Fagle

BLACK HAWK COUNTY RECORDER

MICHAEL FAGLE PO BOX 1143 WATERLOO IA 50704

Michael R. Fagle, L.S.

Earth Tech, 501 Sycamore St., Suite 222, Waterloo, Iowa 50703

1-319-232-6531

UNITED STATES PUBLIC LAND SURVEY CORNER CERTIFICATE
OF

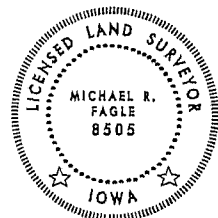
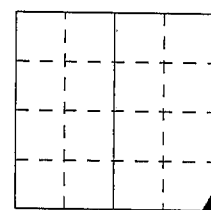
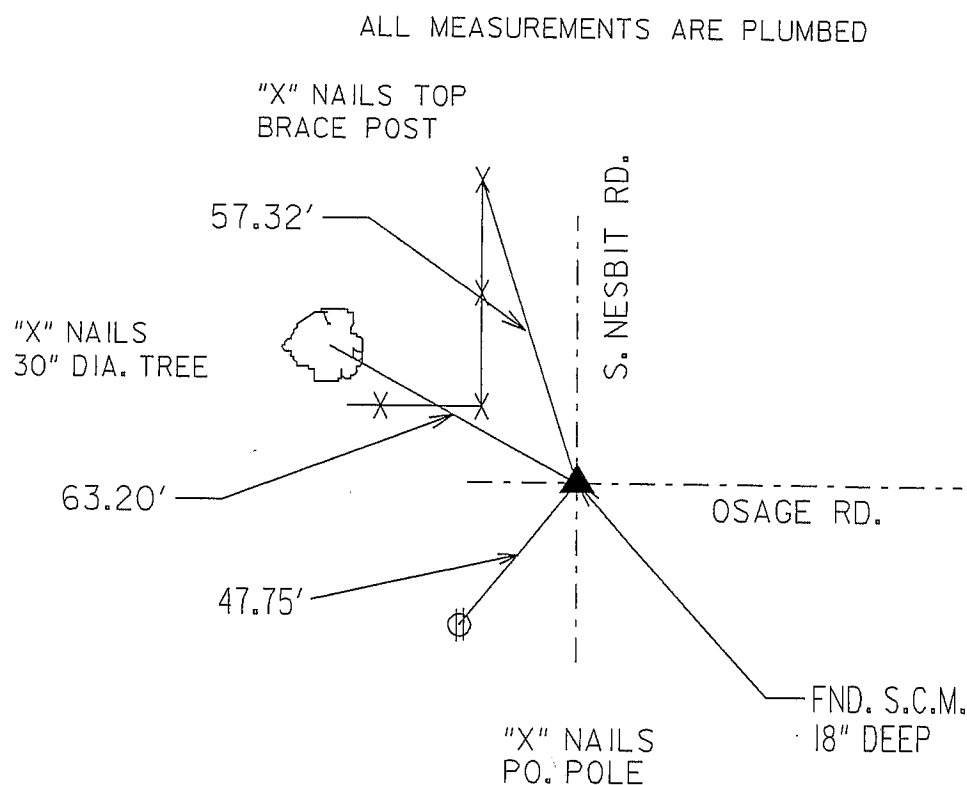
Land Survey Monuments situated in Section 28, Township 89 North,
Range 11 West, of the Fifth Principal Meridian, BLACK HAWK
County, Iowa. Previously recorded in _____
in County Recorder's Office. (Book, Page, Document Number, etc.)

(Show reason for preparing this certificate, the evidence and detailed procedures
used in establishing the corner positions and monumentation found or placed.)

Monument Description and Remarks: SE CORNER SECTION 28-89-11 FOUND S.C.M. 18" DEEP
FOUND FROM OLD TIES.

PLAN - VIEW

(Show a minimum of three reference ties to durable physical objects, relevant
monuments and physical conditions that will enable recovery of the corner.)



I hereby certify that this Land Surveying
document was prepared by me or under
my direct personal supervision and
that I am a duly Licensed Land Surveyor
under the laws of the State of Iowa.

Michael R. Fagle 4-04-05
MICHAEL R. FAGLE Date

License number 8505

My license renewal date is December 31, 2006

Pages or sheets covered by this seal:
THIS SHEET

List Corners to be Indexed

Corners	Section	Twp	Range
SOUTHEAST CORNER	28	T 89 N	R 11 W