

PREPARED BY: BLACK HAWK COUNTY ENGINEERS OFFICE
316 E. FIFTH STREET, ROOM 211 WATERLOO, IOWA 50703PH.# (319) 833-3008
FAX# (319) 833-3139SLSI 9-94
CERT 12-96

UNITED STATES PUBLIC LAND SURVEY CORNER CERTIFICATE OF
Land Survey Monuments situated in Section 28, Township 89 N,
Range 11 W, of the Fifth Principal Meridian, BLACK HAWK County, Iowa.
Previously recorded in Misc. Book N/A, Page N/A, in County Recorder's Office.
(Show reason for preparing this certificate, the evidence and detailed procedures used in establishing the corner
positions and monumentation found or placed.)

Monument Description and Remarks: NORTH 1/4 CORNER SECTION 28-89-11
HELD INTERSECTION OF TWO RECORD TIES TO RCB, BH. CO. 1960. EXCAVATED
ACC TO PCC, FND. EXPOSED RBR. FOR RCB (HORIZ.), AND DECAYED PCC JOINT.
NO PLUG NOR CUT "X" OBSERVED. REF. WPA MEAS. STATE "FND. PLUG ON C.L.
U.S. 20 @ 1/4 FNC. N.&S., TIED IN SAME AS N.1/4". HELD FND. TIES & RESET
#5 RBR. x 5" L., BEING LOC. ±C.L. OF PAVEMENT SURFACE & ALIGNED WITH
N-S 1/4 FENCE. WPA RECORD MEAS. PROPORTION WOULD FALL 0.34' WEST
OF INTERSECTED TIES. REFER TO ADDITIONAL SURVEYOR'S NOTE BELOW:

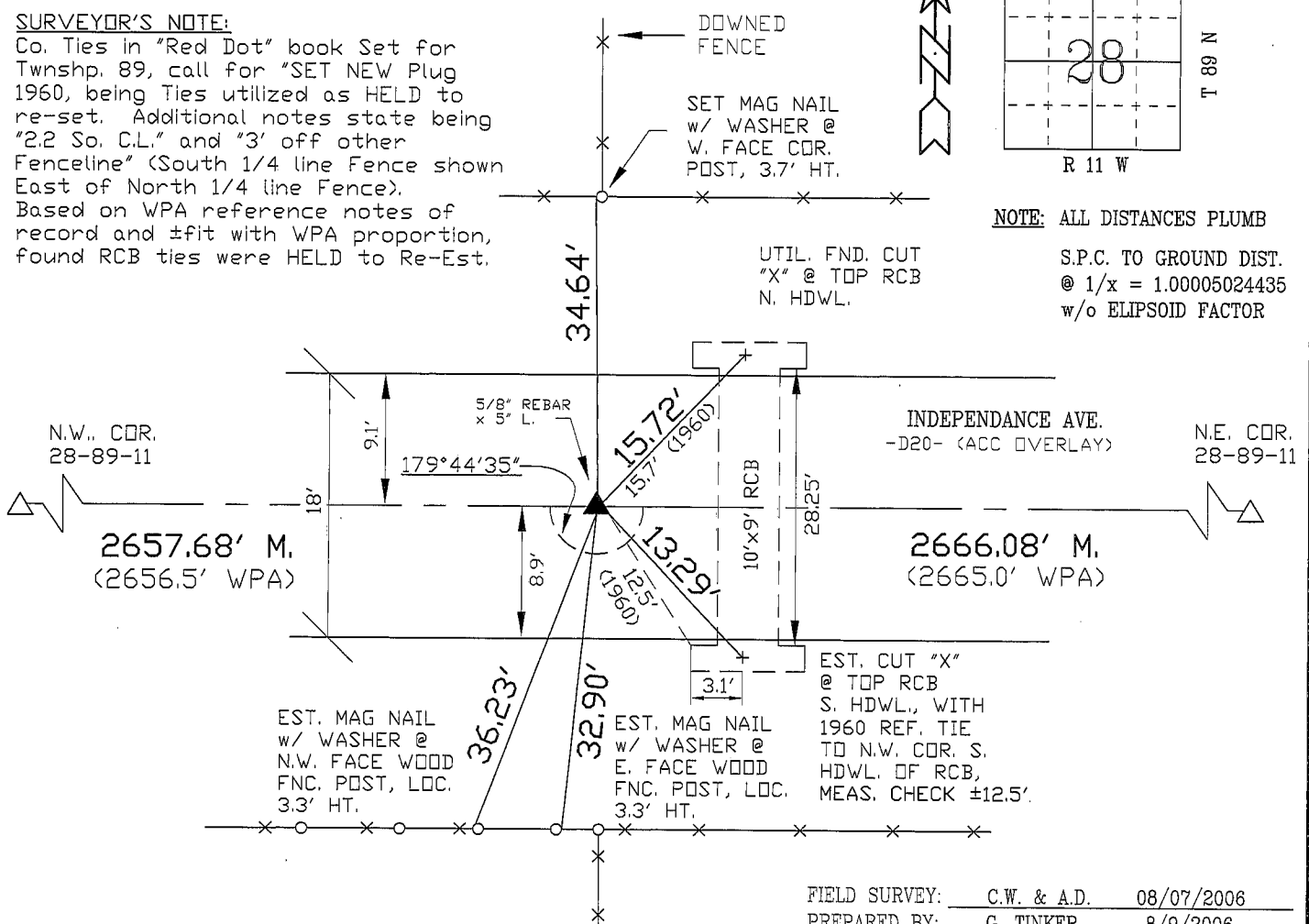
PLAN - VIEW

(Show a minimum of three reference ties to durable physical objects, relevant monuments and physical conditions
that will enable recovery of the corner.)

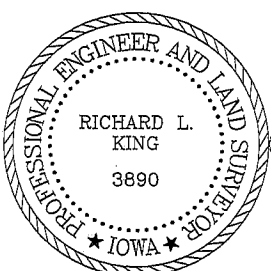
NOT TO SCALE

SURVEYOR'S NOTE:

Co. Ties in "Red Dot" book Set for
Twnshp. 89, call for "SET NEW Plug
1960, being Ties utilized as HELD to
re-set. Additional notes state being
"2.2 So. C.L." and "3' off other
Fenceline" (South 1/4 line Fence shown
East of North 1/4 line Fence).
Based on WPA reference notes of
record and ±fit with WPA proportion,
found RCB ties were HELD to Re-Est.

FIELD SURVEY: C.W. & A.D. 08/07/2006
PREPARED BY: G. TINKER 8/9/2006

CERTIFICATION



I hereby certify that this land surveying document
was prepared and the related survey work was
performed by me or under my direct personal
supervision and that I am a duly licensed Land
Surveyor under the laws of the State of Iowa.

Richard L. King 8/16/06
Richard L. King (date)

License Number 3890

My license renewal date is December 31, 2007

Pages or sheets covered by this seal:

This Land Corner Certificate Only.

LIST CORNERS TO BE INDEXED

Corner	Section	Township	Range
N. 1/4	28	89 N	11 W
S. 1/4	21	89 N	11 W