

Reserved for County Recorder's use.



Doc ID: 011885110001 Type: GEN
Recorded: 01/05/2023 at 05:41:32 PM
Fee Amt: \$7.00 Page 1 of 1
Black Hawk County Iowa
SANDIE L. SMITH RECORDER
File **2023-00009687**

Jeffrey P. Helland, 6109 Chancellor Drive, Cedar Falls, Iowa 50613-6916, (319)-266-0161

UNITED STATES PUBLIC LAND SURVEY CORNER CERTIFICATE
OF

LAND SURVEY MONUMENTS SITUATED IN SECTION NO. 27, TOWNSHIP NO. 89 NORTH, RANGE
NO. 11 WEST OF THE FIFTH PRINCIPAL MERIDIAN, BLACK HAWK COUNTY, IOWA.
PREVIOUSLY RECORDED IN N/A

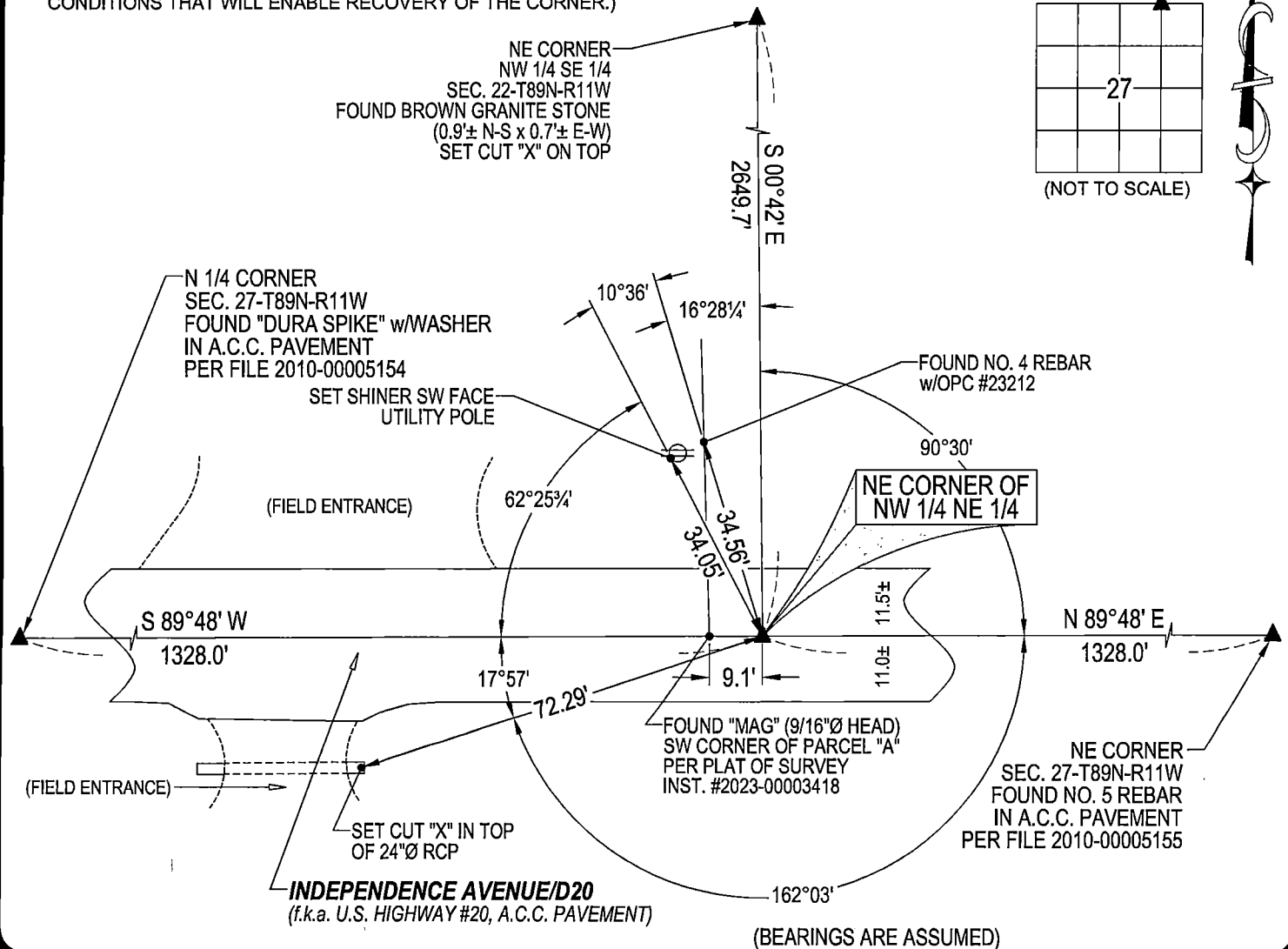
(SHOW REASON FOR PREPARING THIS CERTIFICATE, THE EVIDENCE AND DETAILED PROCEDURES USED IN ESTABLISHING THE
CORNER POSITIONS AND MONUMENTATION FOUND OR PLACED.)

MONUMENT DESCRIPTION AND REMARKS:
NO USPLSCC ON FILE. SURVEY COMPLETED IN THE SE 1/4 OF SEC. 22-T89N-R11W.

→ **NE CORNER OF NW 1/4 NE 1/4:** NO BLACK HAWK COUNTY ENGINEER TIES AVAILABLE NOR ANY OTHER PUBLIC
DOCUMENTATION OF THE HISTORY AND PERPETUATION OF CORNER WERE AVAILABLE. SET "P-K" NAIL (9/16"Ø HEAD)
IN A.C.C. PAVEMENT AT THE MIDPOINT OF A STRAIGHT LINE BETWEEN THE N 1/4 CORNER AND NE CORNER OF SECTION
27 AND UTILIZED IT AS THE CORNER.

PLAN VIEW

(SHOW A MINIMUM OF THREE REFERENCE TIES TO DURABLE PHYSICAL OBJECTS, RELEVANT MONUMENTS AND PHYSICAL
CONDITIONS THAT WILL ENABLE RECOVERY OF THE CORNER.)



HELLAND ENGINEERING & SURVEYING, LTD.
6109 Chancellor Drive
Cedar Falls, Iowa 50613-6916
(319)-266-0161

SHINER = 4d. NAIL & 1 5/16"Ø METAL SHINER DRAWN BY: JPH
BRASS TAG = 4d. NAIL & 13/16"Ø BRASS TAG
OPC = PLASTIC CAP (O=ORANGE, R=RED, Y=YELLOW)
(00') RECORDED AS FILE NAME: 22-212-43.DWG



I hereby certify that this land surveying document was prepared
and the related survey work was performed by me or under my
direct personal supervision and that I am a duly licensed
Professional Land Surveyor under the laws of the State of Iowa.
Jeffrey P. Helland 12/19/2022
Jeffrey P. Helland
License Number 16264
My license renewal date is December 31, 2023.
All pages or sheets are covered by this seal except:

LIST CORNERS TO BE INDEXED			
CORNER	SECTION	TOWNSHIP	RANGE
NE COR. NW 1/4 NE 1/4	27	89N	11W
SE COR. SW 1/4 SE 1/4	22	89N	11W
SW COR. SE 1/4 SE 1/4	22	89N	11W
NW COR. NE 1/4 NE 1/4	27	89N	11W