

PREPARED BY: BLACK HAWK COUNTY ENGINEERS OFFICE  
316 E. FIFTH STREET, ROOM 211 WATERLOO, IOWA 50703

PH.# (319) 833-3008  
FAX.# (319) 833-3139  
SLSI 9-94  
BHCO 03-09

UNITED STATES PUBLIC LAND SURVEY CORNER CERTIFICATE OF  
Land Survey Monuments situated in Section 27, Township 89 N,  
Range 11 W, of the Fifth Principal Meridian, BLACK HAWK County, Iowa.  
Previously recorded in FEE Book 2007, Page 04192, in County Recorder's Office.  
(Show reason for preparing this certificate): The corner monument has been Replaced or Modified, per Ia. Code 355.11(1)(c)

(Evidence and detailed procedures used in establishing the corner position(s) and monumentation found or placed.)  
Monument Description and Remarks: E. 1/4 COR. FND #5 (5/8") REBAR IN ACC  
PVM'T. PRIOR TO HMA RESURFACING PROJECT. CORNER RE-ESTABLISHED DURING PROJECT  
PRELIM. SURVEY (2006), BY SAME. REFER TO ABOVE SAID RECORD REGARDING DETAILS  
AND PROCEEDURES REGARDING PRIOR MONUMENTATION. TEMP. REFERENCED EXISTING PER  
RTK GPS, WITH GEOM. ANGLE VERIFIED PER PREV. RECORD MEASURE. RESET 5" L. DURA™  
SPIKE w/WASHER IN ACC PAVEMENT. CORNER LOC. ±0.4' EAST OF NEW C.L. PAVING  
JOINT, AND REMAINS ALIGNED WITH DATED ANGLE IRON (COR. POST) EAST. EXISTING 8"  
DP. PCC PVM'T. REMAINS UNDER 6" DP. ACC OVERLAY. HISTORICAL CORNER IN PCC PVM'T.  
NOT FOUND PER PREVIOUS RECORD.

### PLAN VIEW

"NOT TO SCALE"

BHco Hist. Ties: BK. #1002 p.27 89-11

FIELD BOOK: Topcon 7i Std. Meas.

(Show a minimum of three reference ties to durable physical objects, relevant monuments and physical conditions that will enable recovery of the corner.)

- 1.) TIES PER EDM MEASURE IN EITHER PRISM "OR" NON-PRISM MODE, WHILE UTILIZING "DIRECT" MEASURE, WITH ALL DISTANCES PLUMB/HORIZ. (HD), UNLESS DENOTED.

- 2.) SECTION LINE MEASURE REFERS TO "LOCAL GROUND" DIST. AND INCLUDES ELLIPSOIDAL (COMBINED) SCALE FACTOR FROM S.P.C. GRID INVERSE (AS OBSERVED, PER AVG. SCALE FACTOR = 1.0000909055624

(R.) DENOTES RECORD RTK GPS MEASURE WITHOUT (w/o) ELLIPSOID FACTOR APPLIED. (±1.000040661 x = ±M.)

UTIL. MAG NAIL w/WASHER @ N. FACE BRACE POST 0.8' HT.

END POST 33.77'

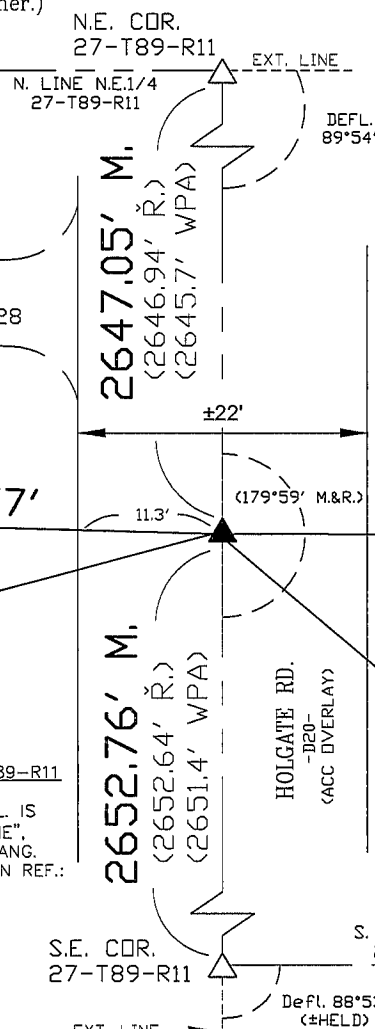
S.E. COR. 27-T89-R11  
= P.I. 557+66  
NOTE THAT DEFL. IS TO "SECTION LINE", SAME AS C.L. TANG. GEOM., PER PLAN REF.: 88°53' LT. D=38' T=147.9 L=233.9 R=150.8 E=60.4

S.P.C., Ia. N. Zone, USft

N=3644689.220'

E=5293157.260'

(NAD83) "BHco1994 Net Adj.", RTK Obs.)



UTIL. CUT "X" @ S.W. COR. EDGE OF OLD ANGLE IRON COR. POST, 1.8' HT.

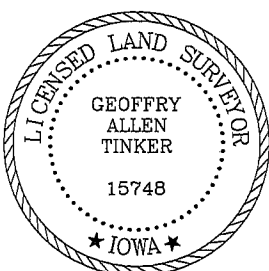
⊙ DATED MTL. BRACE POST

RECORD PAV. PLANS CALL FOR STA. 531+14 @ 1/4 FENCE LINE E/W.

FIELD SURVEY: G.T./J.Z./D.B. 06/01/09

PREPARED BY: J.Z. & G.T. 9/3/09

### CERTIFICATION



I hereby certify that this land surveying document was prepared and the related survey work was performed by me or under my direct personal supervision and that I am a duly licensed Land Surveyor under the laws of the State of Iowa.

*Geoffrey Allen Tinker* 09/09/09  
Geoffrey Allen Tinker (date)

License Number 15748

My license renewal date is December 31, 2010

Pages or sheets covered by this seal:

This Land Corner Certificate Only.

### LIST CORNERS TO BE INDEXED

Corner	Section -	Township -	Range
E. 1/4 Cor.	27	89 N	11 W
W. 1/4 Cor.	26	89 N	11 W

### INDEX OF ABBREVIATIONS

(M) = "Measured" Dimension  
(P) = "Platted" Dimension  
(R) = "Record" Dimension  
(C) = "Calculated" Dimension  
(GS) = Iowa Geodetic Survey  
(WPA) = Works Progress Admin. Survey  
(G) = per George Miller Survey (BHco Surveyor 1558-1860)  
(S) = per John Ball Survey (BHco Surveyor 1866-1891)  
(N) = per Nathan Barber Survey (BHco Surveyor 1908-1931)  
"NP" = Reflectorless EDM Meas.  
"MLM" = Indirect Measure  
"CM" = Concrete Monument  
"SM" = Survey Marker Spike/Tag  
"PK" = PK/MAG Nail Brand Style