

DANIEL T. CRAWFORD, P.E. & L.S.

P.O. Box 793 205 Second Ave NE 50644

Crawford Engineering & Surveying, Inc., Independence, Iowa 319/334-7077

UNITED STATES PUBLIC LAND SURVEY CORNER CERTIFICATE

OF

Land Survey Monuments situated in Section 25, Township 89 N, Range 11 W, of the Fifth Principal Meridian, Black Hawk County, Iowa.

Previously recorded in N/A in County Recorder's Office.

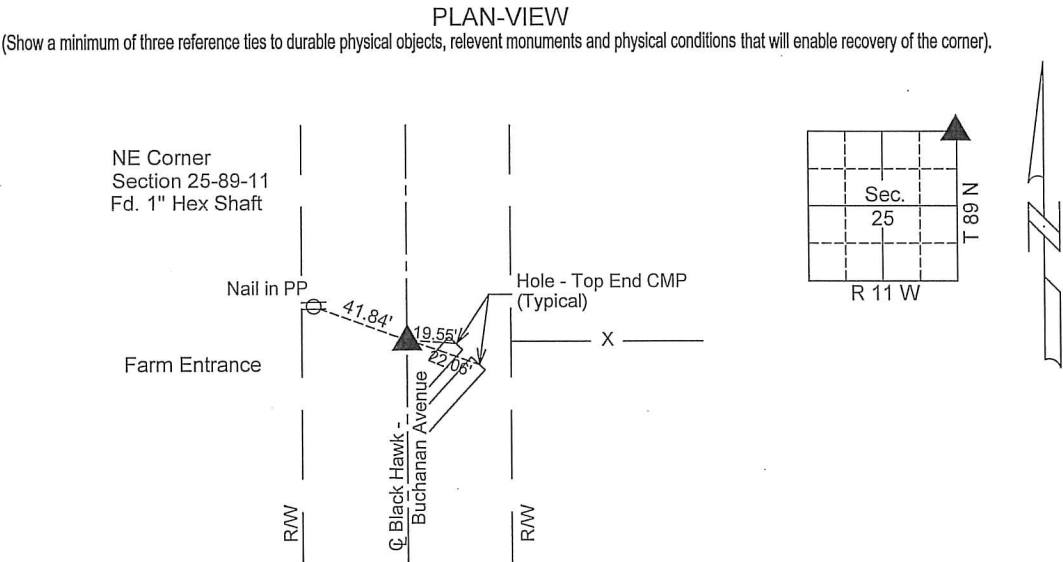
Monument Description and Remarks:

Reason for preparing certificate: Current certificate for NE Corner is not on file.

Evidence and detailed procedure used to establish corner position: Corner position previously established.

monumented with SCM

Monumentation found or placed: Found hex shaft 1.0' below road



I hereby certify that the survey work was completed and this land surveying document was prepared by me or under my direct personal supervision and that I am a duly licensed land surveyor under the laws of the State of Iowa.

Signature: Daniel T. Crawford

DANIEL T. CRAWFORD, P.E. & L.S.

Date: 10-6-2015 Reg. No. 8812

My license renewal date is December 31, 2015

SEAL

PROFESSIONAL ENGINEER & LAND SURVEYOR

DANIEL T.

IOWA

8812

CRAWFORD

List Corners to be Indexed

Corners	Section	Twp.	Range
NE Corner	25	89 N	11 W
SE Corner	24	89 N	11 W

V. 21.0° 2P

(17)