

DANIEL T. CRAWFORD, P.E. & L.S.

P.O. Box 793 205 Second Ave NE 50644

Crawford Engineering & Surveying, Inc., Independence, Iowa 319/334-7077

UNITED STATES PUBLIC LAND SURVEY CORNER CERTIFICATE

OF

Land Survey Monuments situated in Section 25, Township 89 N, Range 11 W, of the Fifth Principal Meridian, Black Hawk County, Iowa.

Previously recorded in N/A in County Recorder's Office.

Monument Description and Remarks:

Reason for preparing certificate: Current certificate for North 1/4 Corner is not on file.

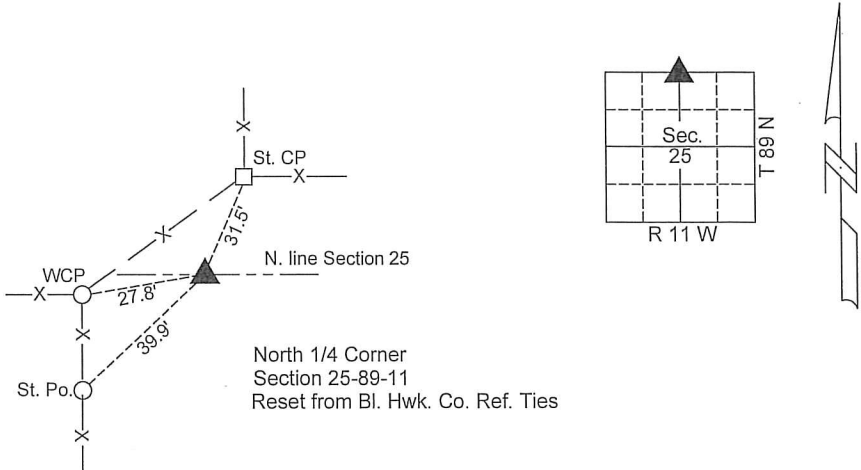
Evidence and detailed procedure used to establish corner position: Corner monument obliterated. Corner position re-established from reference ties.

Monumentation found or placed: Placed 1/2" rebar w/YPC #8812 inside 1-1/2" x 1-1/4" Sq. Steel Bar 3.6' long.

Dug and probed to 5' depth in unsuccessful search for SCM.

PLAN-VIEW

(Show a minimum of three reference ties to durable physical objects, relevant monuments and physical conditions that will enable recovery of the corner).



I hereby certify that the survey work was completed and this land surveying document was prepared by me or under my direct personal supervision and that I am a duly licensed land surveyor under the laws of the State of Iowa.

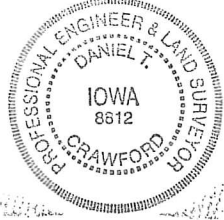
Signature: Daniel T. Crawford

DANIEL T. CRAWFORD, P.E. & L.S.

Date: 10-6-2015 Reg. No. 8812

My license renewal date is December 31, 2015

SEAL



List Corners to be Indexed			
Corners	Section	Twp.	Range
North 1/4 Corner	25	89 N	11 W
South 1/4 Corner	24	89 N	11 W