

DANIEL T. CRAWFORD, P.E. & L.S. \* Crawford Engineering & Surveying, Inc., Independence, Iowa 319/334-7077  
P.O. Box 793 205 Second Ave N.E. 50644

UNITED STATES PUBLIC LAND SURVEY CORNER CERTIFICATE  
OF

Land Survey Monuments situated in Section 25, Township 89 N, Range 11 W, of the Fifth Principal Meridian, Black Hawk County, Iowa.  
Previously recorded in N/A in County Recorder's Office.

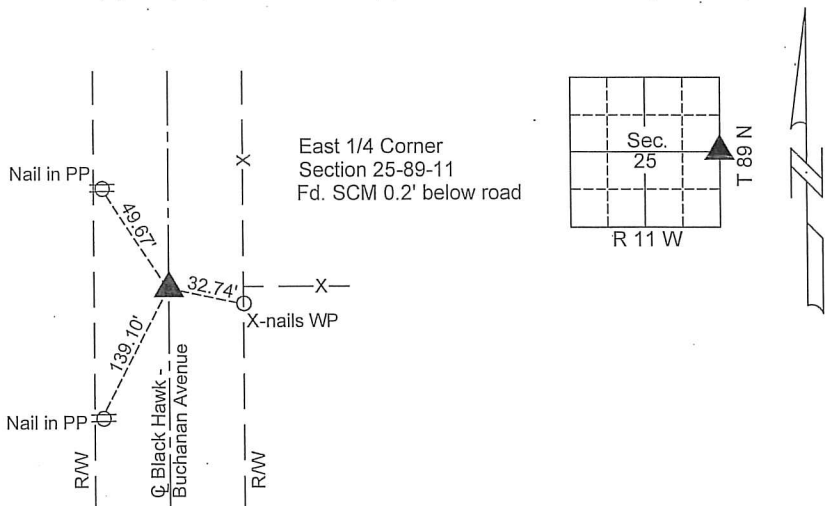
Monument Description and Remarks:

Reason for preparing certificate: Current certificate  
Evidence and detailed procedure used to establish corner position: Corner position previously established and monumented with SCM

Monumentation found or placed: Found SCM stamped 25/30, 0.2' below road

PLAN-VIEW

(Show a minimum of three reference ties to durable physical objects, relevant monuments and physical conditions that will enable recovery of the corner).



I hereby certify that the survey work was completed and this land surveying document was prepared by me or under my direct personal supervision and that I am a duly licensed land surveyor under the laws of the State of Iowa.

Signature: Daniel T. Crawford  
DANIEL T. CRAWFORD, P.E. & L.S.

Date: 10-6-2015 Reg. No. 8812

My license renewal date is December 31, 2015

SEAL



List Corners to be Indexed			
Corners	Section	Twp.	Range
East 1/4 Corner	25	89 N	11 W
West 1/4 Corner	30	89 N	10 W