

PROOF FILED FOR RECORD SEP 14, 2004, AT 3:00 P.M. FEE N/C

COMPARED

Patricia A. Sloss

BLACK HAWK COUNTY RECORDER

BLACK HAWK COUNTY ENGINEER

PREPARED BY: BLACK HAWK COUNTY ENGINEERS OFFICE
316 E. FIFTH STREET, ROOM 211 WATERLOO, IOWA 50703PH.# (319) 833-3008
FAX.# (319) 833-3139SLSI 9-94
CERT 12-96

UNITED STATES PUBLIC LAND SURVEY CORNER CERTIFICATE OF
Land Survey Monuments situated in Section 24, Township 89 N,
Range 11 W, of the Fifth Principal Meridian, BLACK HAWK County, Iowa.
Previously recorded in Misc. Book N/A, Page N/A, in County Recorder's Office.

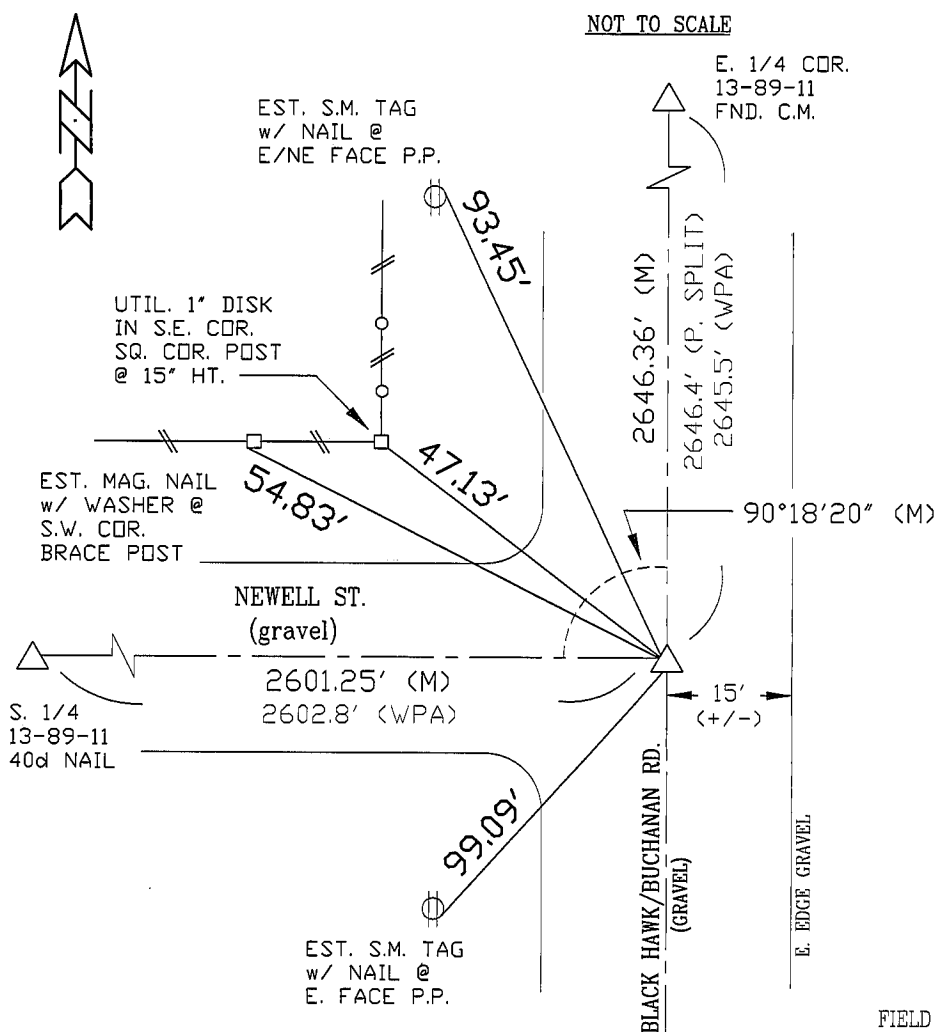
(Show reason for preparing this certificate, the evidence and detailed procedures used in establishing the corner positions and monumentation found or placed.)

Monument Description and Remarks: N.E. CORNER SECT. 24-89-11
FND. 6-SIDED STEEL PIN @ 12" DEEP LOC. +/- C.L. INT. w/ RD. WEST.
RAISED USING CAP TO COUPLE A 0.8' L. x #5 RBR. TO 2" DEPTH, w/
YELLOW CAP #15748. CORNER UTILIZED TO REF. PLS #8505 PLAT IN
MISC. BK. 319-268/270 AND "RECORD OF SURVEY" FOR SECTION 13-89-11.

PLAN - VIEW

(Show a minimum of three reference ties to durable physical objects, relevant monuments and physical conditions that will enable recovery of the corner.)

NOT TO SCALE



NOTE:

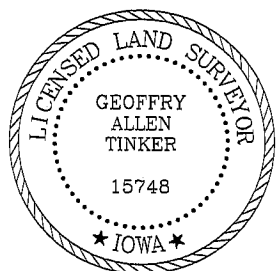
ALL DISTANCES PLUMB

"S.M." DENOTES "SURVEY MARKER" TAG

ANGLES PER RTK GPS MEASURE

FIELD SURVEY: G.T. & C.W. 04/01/04
PREPARED BY: G. Tinker 07/15/04

CERTIFICATION



I hereby certify that this land surveying document was prepared and the related survey work was performed by me or under my direct personal supervision and that I am a duly licensed Land Surveyor under the laws of the State of Iowa.

Geoffrey Allen Tinker 9/03/04
Geoffrey Allen Tinker (date)

License Number 15748My license renewal date is December 31, 2004

Pages or sheets covered by this seal:

This Land Corner Certificate Only.

LIST CORNERS TO BE INDEXED

Corner	Section	Township	Range
N.E. Cor.	24	89 N	11 W
S.E. Cor.	13	89 N	11 W