

UNITED STATES PUBLIC LAND SURVEY CORNER CERTIFICATE

Copy

OF

Recorded

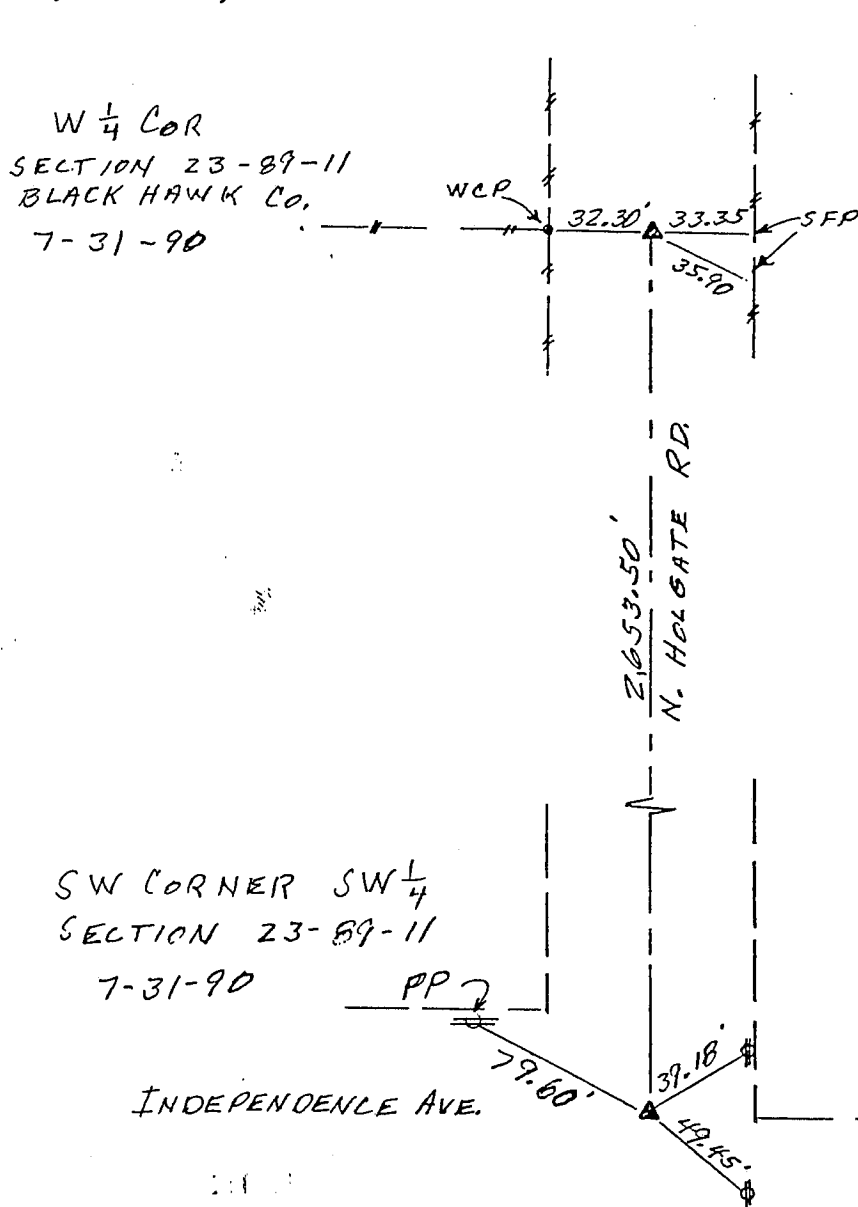
Land Survey Monuments situated in Section 23, Township 89 N, Range 11 W, of the Fifth Principal Meridian, BLACK HAWK County, Iowa.
Previously recorded in Book _____, Page _____.

(Show reason for preparing this certificate, the evidence and detailed procedures used in establishing the corner positions and monumentation found or placed.)

Monument Description and Remarks: SOUTHWEST CORNER SW 1/4 & NORTHWEST CORNER SW 1/4 & LOCATED CORNERS FROM REFERENCE TIES - FOUND IRON PINS

PLAN - VIEW

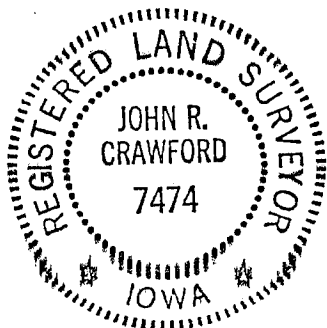
(Show a minimum of three reference ties to durable physical objects, relevant monuments and physical conditions that will enable recovery of the corner.)



I hereby certify that the survey work was completed and this certificate was prepared by me or under my direct personal supervision and that I am a duly registered land surveyor under the laws of the state of Iowa.

John R. Crawford
REGISTERED LAND SURVEYOR NO. 7474

SEAL



List Corners to be Indexed

Corners	Section	Twp	Range
E 1/4	22	89	11
SE	22	89	11
W 1/4	23	89	11
SW	23	89	11
NE	27	89	11
NW	26	89	11