

BLACK HAWK COUNTY ENGINEER

PREPARED BY: BLACK HAWK COUNTY ENGINEERS OFFICE PH.# (319) 833-3008 SLSI 9-94
316 E. FIFTH STREET, ROOM 211 WATERLOO, IOWA 50703 FAX.# (319) 833-3139 CERT 12-96

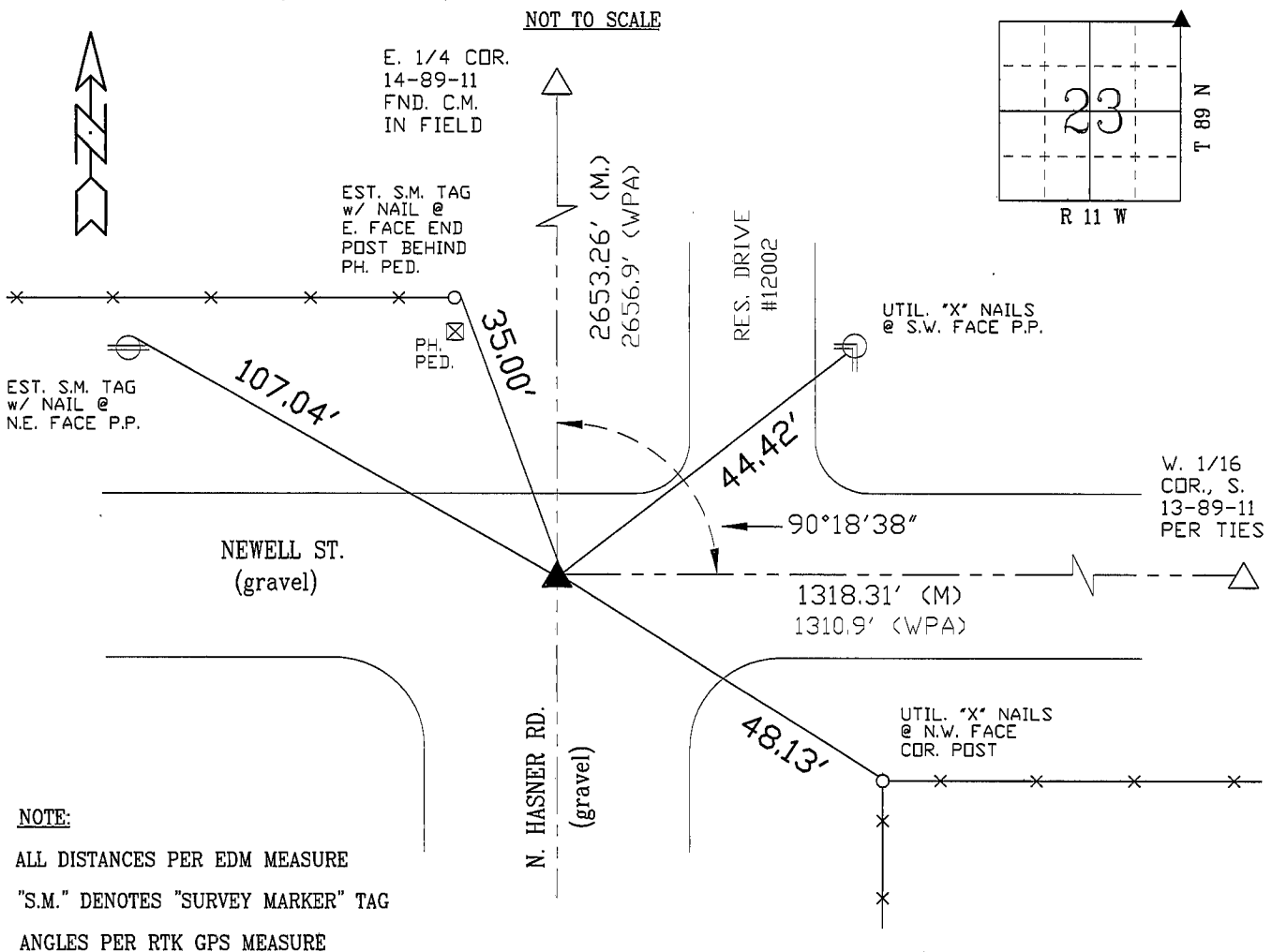
UNITED STATES PUBLIC LAND SURVEY CORNER CERTIFICATE OF
Land Survey Monuments situated in Section 23, Township 89 N,
Range 11 W, of the Fifth Principal Meridian, BLACK HAWK County, Iowa.
Previously recorded in Misc. Book n/a, Page n/a, in County Recorder's Office.

(Show reason for preparing this certificate, the evidence and detailed procedures used in establishing the corner positions and monumentation found or placed.)

Monument Description and Remarks: FND. 20d NAIL @ C.L. INT. w/ GRAVEL
RD. SOUTH. CORNER RECOVERED TO ASSIST w/ RECOVERY OF WEST 1/4
CDR. SECT. 13, REF. IN "RECORD OF SURVEY" FOR SAID SECTION 13, AND
UPDATED FOR PUBLIC RECORD.
RECORD LAND LINE SURVEY, 1976, FOR LAND CORNERS IN SECTIONS 9 & 10.
CORNER UPDATED FOR PUBLIC REFERENCE.

PLAN - VIEW

(Show a minimum of three reference ties to durable physical objects, relevant monuments and physical conditions that will enable recovery of the corner.)



NOTE:

ALL DISTANCES PER EDM MEASURE

"S.M." DENOTES "SURVEY MARKER" TAG

ANGLES PER RTK GPS MEASURE

FIELD SURVEY: G.T. & C.W. 04/01/04
PREPARED BY: G. TINKER 07/14/04

CERTIFICATION



I hereby certify that this land surveying document was prepared and the related survey work was performed by me or under my direct personal supervision and that I am a duly licensed Land Surveyor under the laws of the State of Iowa.

Geoffrey Allen Tinker 9/03/04
Geoffrey Allen Tinker (date)

License Number 15748

My license renewal date is December 31, 2004

Pages or sheets covered by this seal:

This Land Corner Certificate Only.

LIST CORNERS TO BE INDEXED

Corner	Section	Township	Range
N.E. COR.	23	89 N	11 W
N.W. COR.	24	89 N	11 W
S.E. COR.	11	89 N	11 W
S.W. COR.	13	89 N	11 W