

Jeffrey P. Helland, 1107 Technology Parkway, Cedar Falls, Iowa 50613-6951, (319)-266-0161

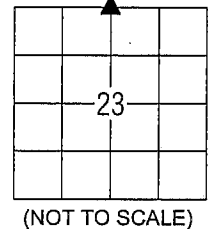
UNITED STATES PUBLIC LAND SURVEY CORNER CERTIFICATE
OFLAND SURVEY MONUMENTS SITUATED IN SECTION NO. 23, TOWNSHIP NO. 89 NORTH, RANGE
NO. 11 WEST OF THE FIFTH PRINCIPAL MERIDIAN, BLACK HAWK COUNTY, IOWA.
PREVIOUSLY RECORDED IN N/A(SHOW REASON FOR PREPARING THIS CERTIFICATE, THE EVIDENCE AND DETAILED PROCEDURES USED IN ESTABLISHING THE
CORNER POSITIONS AND MONUMENTATION FOUND OR PLACED.)

MONUMENT DESCRIPTION AND REMARKS:

NO USPLSCC ON FILE. SURVEY COMPLETED IN THE SW 1/4 & SE 1/4 OF SEC. 14-T89N-R11W.

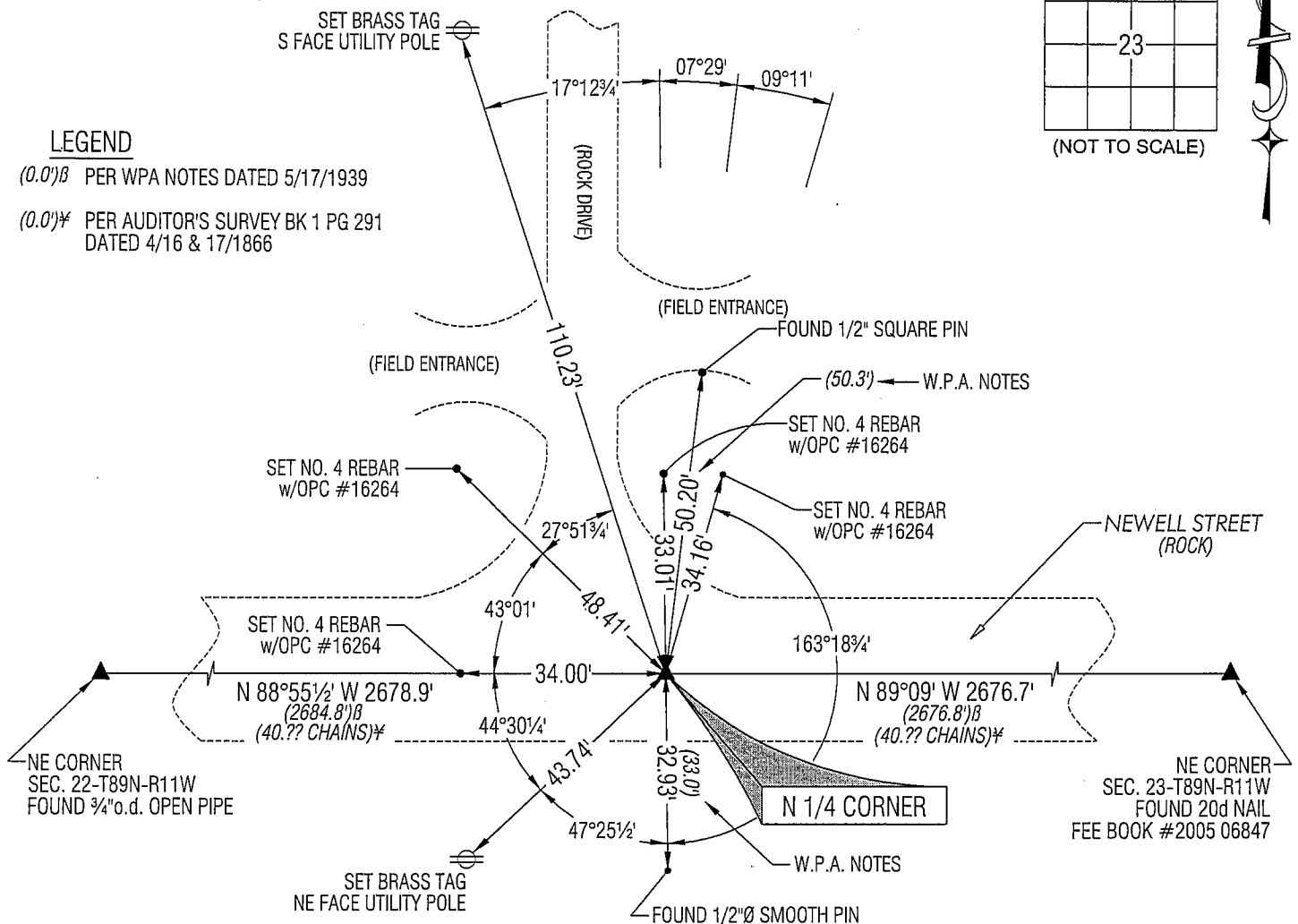
N 1/4 CORNER: AUDITOR'S PLAT OF SURVEY BK 1 PG 291 DATED 4/16 & 17/1866 CALLS FOR [STONE]. W.P.A. NOTES DATED
5/18/1939 CALLS FOR [FOUND LIME STONE 15" x 9" x 5" IRON BAR 1/2" x 31" AND REMNANT OF AN OLD OAK. LOWERED
EVIDENCE AND SET C.M. ON TOP 12" DEEP]. PLAT OF SURVEY BK 218 PG 427 DATED 2/14/1976 CALLS FOR [FD. 1" PIPE 3"
DEEP]. BLACK HAWK COUNTY ENGINEER REFERENCE TIES CALL FOR [S.C.M.]. FOUND 1 1/4" o.d. PINCHED PIPE (1.7' LONG)
LEANING SLIGHTLY NLY. STRAIGHTENED PIPE AND RESET USING TWO REMAINING TIES. HIT SOMETHING VERY HARD (C.M.)
WHILE TRYING TO DRIVE PIPE DOWN. UTILIZED PIPE AS CORNER, NOW BEING 0.3' DEEP.

PLAN VIEW

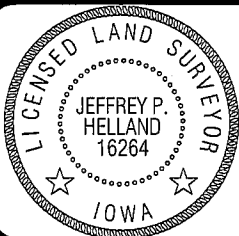
(SHOW A MINIMUM OF THREE REFERENCE TIES TO DURABLE PHYSICAL OBJECTS, RELEVANT MONUMENTS AND PHYSICAL
CONDITIONS THAT WILL ENABLE RECOVERY OF THE CORNER.)

LEGEND

(0.0')B PER WPA NOTES DATED 5/17/1939

(0.0')# PER AUDITOR'S SURVEY BK 1 PG 291
DATED 4/16 & 17/1866

(BEARINGS ARE ASSUMED)

HELLAND ENGINEERING & SURVEYING, LTD.
1107 Technology Parkway
Cedar Falls, Iowa 50613-6951SHINER = 8D NAIL & 1 5/16"Ø METAL SHINER
BRASS TAG = 13/16"Ø BRASS TAG
OPC = PLASTIC CAP (O=ORANGE, R=RED, Y=YELLOW)
(00') RECORDED AS FILE NAME: 08-148C2.DWGI hereby certify that this land surveying document was prepared
and the related survey work was performed by me or under my
direct personal supervision and that I am a duly licensed Land
Surveyor under the laws of the State of Iowa.Jeffrey P. Helland 4/15/08
Jeffrey P. Helland
License Number 16264
My license renewal date is December 31, 2009.
All pages or sheets are covered by this seal except:

LIST CORNERS TO BE INDEXED

CORNER	SECTION	TOWNSHIP	RANGE
N 1/4 CORNER	23	89N	11W
S 1/4 CORNER	14	89N	11W