

I  
P  
Z

Document Number: 2008020269  
Date: Apr 15, 2008 4:30:00 pm  
Aud Fee: 0.00 Rec Fee: 5.00  
Trans Tax: 0.00 Rec Management Fee: 1.00  
E-Com Fee: 1.00 Non-Standard Page Fee: 0.00  
Filed for record in Black Hawk County, Iowa  
Judith A. McCarthy, County Recorder

UNITED STATES PUBLIC LAND SURVEY CORNER CERTIFICATE  
OF

LAND SURVEY MONUMENTS SITUATED IN SECTION NO. 22, TOWNSHIP NO. 89 NORTH, RANGE NO. 11 WEST OF THE FIFTH PRINCIPAL MERIDIAN, BLACK HAWK COUNTY, IOWA.  
PREVIOUSLY RECORDED IN BK 307 PG 243

(SHOW REASON FOR PREPARING THIS CERTIFICATE, THE EVIDENCE AND DETAILED PROCEDURES USED IN ESTABLISHING THE CORNER POSITIONS AND MONUMENTATION FOUND OR PLACED.)

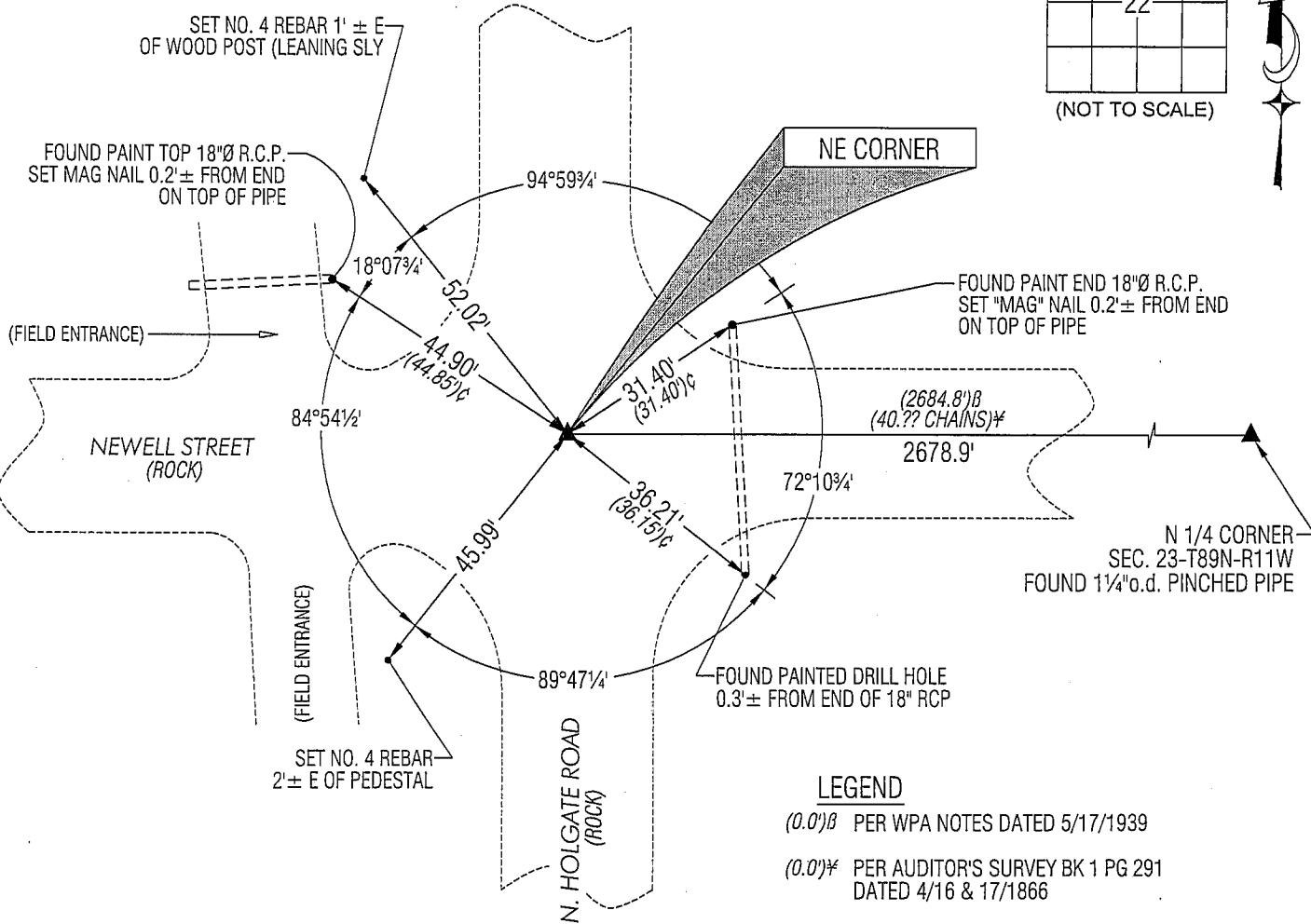
MONUMENT DESCRIPTION AND REMARKS:

USPLSCC BK 307 PG 243 REFERENCE TIES HAVE CHANGED. SURVEY COMPLETED IN THE SW 1/4 & SE 1/4 OF SEC. 14-T59N-R11W.

NE CORNER: AUDITOR'S PLAT OF SURVEY BK 1 PG 291 DATED 4/16 & 17/1866 CALLS FOR [STONE]. W.P.A. NOTES DATED 5/18/1939 CALL FOR [FOUND IRON BAR 1/2" x 22" LONG WOOD STAKE 1" x 3" x 17". LOWERED EVIDENCE AND SET C.M. ON TOP 12" UNDERGROUND.]. BLACK HAWK COUNTY ENGINEER REFERENCE TIES CALL FOR [S.C.M.]. USPLSCC BK 307 PG 243 DATED 5/26/1993 CALLS FOR [FOUND 3/4" IRON PIPE 0.8 FEET DEEP]. FOUND 3/4"o.d. OPEN PIPE 1' LONG (SLIGHTLY BENT SLY). TIED OUT, REMOVED, AND FOUND NO. 6 REBAR 1.6' DEEP. PROBED ALONG THE SIDE OF SAID REBAR AND HIT C.M. @ 3.1' DEEP. RESET SAID 3/4"o.d. OPEN PIPE (NOW BEING 0.6' DEEP) OVER SAID NO. 6 REBAR.

(SHOW A MINIMUM OF THREE REFERENCE TIES TO DURABLE PHYSICAL OBJECTS, RELEVANT MONUMENTS AND PHYSICAL CONDITIONS THAT WILL ENABLE RECOVERY OF THE CORNER.)

PLAN VIEW



LEGEND

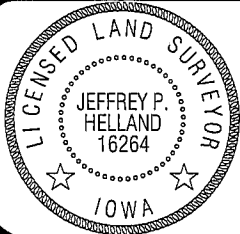
(0.0')<sup>B</sup> PER WPA NOTES DATED 5/17/1939  
(0.0')<sup>Y</sup> PER AUDITOR'S SURVEY BK 1 PG 291 DATED 4/16 & 17/1866  
(0.0')<sup>C</sup> PER USPLSCC BK 307 PG 243

(BEARINGS ARE ASSUMED)



HELLAND ENGINEERING & SURVEYING, LTD.  
1107 Technology Parkway  
Cedar Falls, Iowa 50613-6951  
(319)-266-0161

SHINER = 8D NAIL & 1 5/16"Ø METAL SHINER  
BRASS TAG = 13/16"Ø BRASS TAG  
OPC = PLASTIC CAP (O=ORANGE, R=RED, Y=YELLOW)  
(00') RECORDED AS FILE NAME: 07-148C1.DWG



I hereby certify that this land surveying document was prepared and the related survey work was performed by me or under my direct personal supervision and that I am a duly licensed Land Surveyor under the laws of the State of Iowa.

*Jeffrey P. Helland* 4/15/08  
Jeffrey P. Helland  
License Number 16264  
My license renewal date is December 31, 2009.  
All pages or sheets are covered by this seal except:

LIST CORNERS TO BE INDEXED

CORNER	SECTION	TOWNSHIP	RANGE
NE CORNER	22	89N	11W
SE CORNER	15	89N	11W
SW CORNER	14	89N	11W
NW CORNER	23	89N	11W

Rea.