



Doc ID: 009460570001 Type: GEN  
Recorded: 01/03/2019 at 04:14:54 PM  
Fee Amt: \$7.00 Page 1 of 1  
Black Hawk County Iowa  
SANDIE L. SMITH RECORDER

File 2019-00010204

Reserved for County Recorder's use.

\* Kyle J. Helland, 6109 Chancellor Drive, Cedar Falls, Iowa 50613-6919, (319)-266-0161

# UNITED STATES PUBLIC LAND SURVEY CORNER CERTIFICATE OF

LAND SURVEY MONUMENTS SITUATED IN SECTION NO. 22, TOWNSHIP NO. 89 NORTH, RANGE  
NO. 11 WEST OF THE FIFTH PRINCIPAL MERIDIAN, BLACK HAWK COUNTY, IOWA.

PREVIOUSLY RECORDED IN BOOK 307 PAGE 243.

(SHOW REASON FOR PREPARING THIS CERTIFICATE, THE EVIDENCE AND DETAILED PROCEDURES USED IN ESTABLISHING THE  
CORNER POSITIONS AND MONUMENTATION FOUND OR PLACED.)

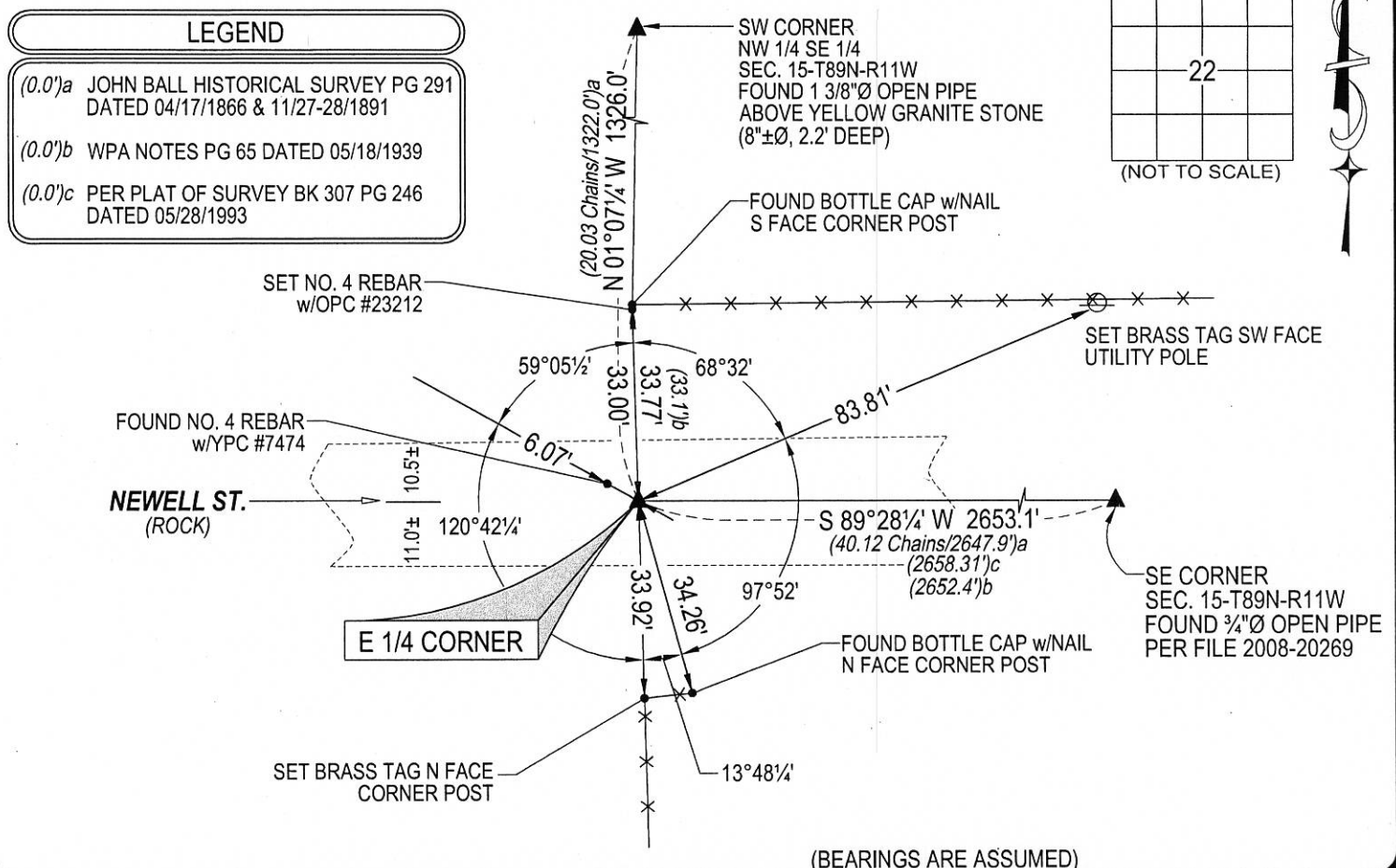
## MONUMENT DESCRIPTION AND REMARKS:

NO USPLSCC ON FILE. SURVEY COMPLETED IN THE SE 1/4 OF SEC. 15-T89N-R11W.

→ **N 1/4 CORNER:** JOHN BALL HISTORICAL SURVEY PG 291 DATED 04/17/1866 & 11/27-28/1891 CALLS FOR [STONE]. WPA NOTES PG 65 DATED 05/18/1939 CALLS FOR [FOUND N\*\*\*\*RHEAD STONE 19"x12"x7" IRON BAR 1/2"x1/2"x23 1/2" LONG AND REMNANT OF AN OLD OAK HUB. LOWERED EVIDENCE AND SET C.M. ON TOP 12" DEEP]. USPLSCC BOOK 307 PAGE 243 DATED 05/26/1993 CALLS FOR [NO INDICATION OF MONUMENT IN ROADWAY. FOUND NW CORNER AND NE CORNER OF SECTION 22 AND SET POINT MIDWAY AND ON LINE.]. PREVIOUS SURVEYOR, PER SAID BOOK 307 PAGE 243 FAILED TO UTILIZE WPA NOTES, WPA CHAINING DISTANCES AND CURRENT TIES FROM THE BLACK HAWK COUNTY ENGINEER'S OFFICE IN REGARDS TO SEARCHING AND/OR REESTABLISHING THIS GOVERNMENT CORNER. SEARCHED AREA PER SAID DOCUMENTS, AND EXCAVATED 2'Ø HOLE AT LOCATION OF WPA CHAINING DISTANCES FROM THE NE CORNER OF SECTION 22-T89N-R11W AND LONE REMAINING WPA TIE FROM NORTH (33.1'). SEARCHED AREA AND EXCAVATED 2'Ø HOLE AND FOUND STANDARD CONCRETE MONUMENT 2.3' DEEP, SET NO. 4 REBAR w/OPC #23212 ABOVE TO RAISE MONUMENT.

## PLAN VIEW

(SHOW A MINIMUM OF THREE REFERENCE TIES TO DURABLE PHYSICAL OBJECTS, RELEVANT MONUMENTS AND PHYSICAL  
CONDITIONS THAT WILL ENABLE RECOVERY OF THE CORNER.)



(BEARINGS ARE ASSUMED)



\* HELLAND ENGINEERING & SURVEYING, LTD.  
6109 Chancellor Drive  
Cedar Falls, Iowa 50613-6919  
(319)-266-0161

SHINER = 4d. NAIL & 1 5/16"Ø METAL SHINER DRAWN BY: CDR  
BRASS TAG = 4d. NAIL & 13/16"Ø BRASS TAG  
OPC = PLASTIC CAP (O=ORANGE, R=RED, Y=YELLOW)  
(00') RECORDED AS FILE NAME: 18-253-24.DWG



I hereby certify that this land surveying document was prepared  
and the related survey work was performed by me or under my  
direct personal supervision and that I am a duly licensed  
Professional Land Surveyor under the laws of the State of Iowa.

Kyle J. Helland 12/31/2018  
Kyle J. Helland  
License Number 23212  
My license renewal date is December 31, 2019.  
All pages or sheets are covered by this seal except:

## LIST CORNERS TO BE INDEXED

CORNER	SECTION	TOWNSHIP	RANGE
N 1/4 CORNER	22	89N	11W
S 1/4 CORNER	15	89N	11W