

File 2023-00009684

Jeffrey P. Helland, 6109 Chancellor Drive, Cedar Falls, Iowa 50613-6916, (319)-266-0161

LAND SURVEY MONUMENTS SITUATED IN SECTION NO. 22, TOWNSHIP NO. 89 NORTH, RANGE
NO. 11 WEST OF THE FIFTH PRINCIPAL MERIDIAN, BLACK HAWK COUNTY, IOWA.
PREVIOUSLY RECORDED IN BOOK 292 PAGE 130 .

(SHOW REASON FOR PREPARING THIS CERTIFICATE, THE EVIDENCE AND DETAILED PROCEDURES USED IN ESTABLISHING THE CORNER POSITIONS AND MONUMENTATION FOUND OR PLACED.)

MONUMENT DESCRIPTION AND REMARKS:

MONUMENTATION HAS CHANGED. SURVEY COMPLETED IN THE SE 1/4 OF SEC. 22-T89N-R11W.

→ **E 1/4 CORNER:** WPA CORNER TIE CARD DATED 11/09/1938 & 05/10/1939 CALLS FOR [FOUND *****HEAD 20" x 10" x 10" IRON PIPE 2" x 30" LONG LOWERED EVIDENCE AND SET C.M. ON TOP 12" DEEP]. BLACK HAWK COUNTY TIES CALLS FOR [CONCRETE MONUMENT SET]. WPA NOTES DATED 05/17/1939 PAGE 5 CALLS FOR [FOUND *****HEAD 20" x 10" x 10" ALSO IRON PIPE 2" x 30"- LOWERED EVIDENCE AND SET C.M. ON TOP 12" UNDERGROUND]. USPLSCC BOOK 292 PAGE 130 DATED 07/31/1990 CALLS FOR [FOUND IRON PIN]. SEARCHED AREA WITH MAGNETIC DETECTOR AND EXCAVATED A HOLE 3'±Ø AND 3'± DEEP, FOUND 2"Ø IRON PIPE LEANING NORTHWESTERLY, AND FOUND BROKEN CONCRETE MONUMENT (BOTTOM 24"±) LEANING NORTHWESTERLY WITH TOP MISSING. THEREFORE EXCAVATED AROUND SAID MONUMENT AND RESET IN ZENITH POSITION BASED ON THE LOCATION OF ITS BASE AND SET CUT "X" ON TOP. UTILIZED SAID MONUMENT AS CORNER.

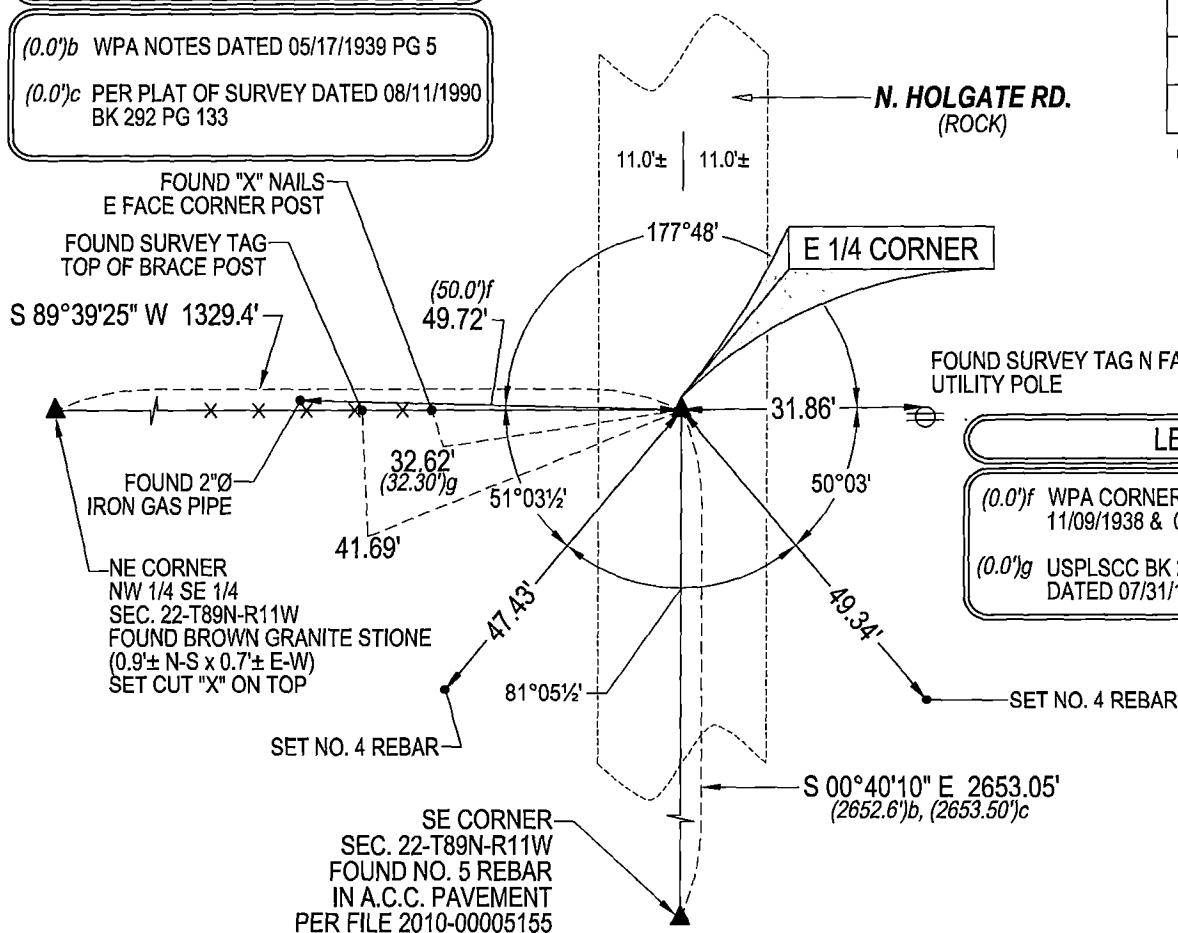
PLAN VIEW

(SHOW A MINIMUM OF THREE REFERENCE TIES TO DURABLE PHYSICAL OBJECTS, RELEVANT MONUMENTS AND PHYSICAL CONDITIONS THAT WILL ENABLE RECOVERY OF THE CORNER.)

LEGEND

(0.0)b WPA NOTES DATED 05/17/1939 PG 5

(0.0')c PER PLAT OF SURVEY DATED 08/11/1990
BK 292 PG 133



LEGEND

(0.0')f WPA CORNER TIE CARDS DATED
11/09/1938 & 05/10/1939

(0.0")g USPLSCC BK 292 PG 130
DATED 07/31/1990

(BEARINGS ARE ASSUMED)



HELLAND ENGINEERING & SURVEYING, LTD.

6109 Chancellor Drive
Cedar Falls, Iowa 50613-6916
(319)-266-0161

SHINER = 4d. NAIL & 1 5/16"Ø METAL SHINER DRAWN BY: CDR

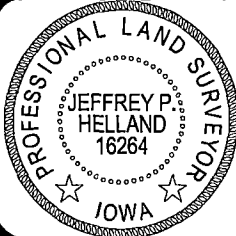
BRASS TAG = 4d. NAIL & 13/16"Ø BRASS TAG

DRAWN BY: CDR

OPC = PLASTIC CAP (O=ORANGE, R=RED, Y=YELLOW)

(00") RECORDED AS

FILE NAME: 22-212-22.DWG



I hereby certify that this land surveying document was prepared and the related survey work was performed by me or under my direct personal supervision and that I am a duly licensed Professional Land Surveyor under the laws of the State of Iowa.

Jerry V. Holland 12/19/2023
 Jerry V. Holland
 License Number 16264
 My license renewal date is December 31, 2023.
 All pages or sheets are covered by this seal except:

LIST CORNERS TO BE INDEXED

CORNER	SECTION	TOWNSHIP	RANGE
E 1/4 CORNER	22	89N	11W
W 1/4 CORNER	23	89N	11W