

Reserved for County Recorder's use.



Doc ID: 01187700001 Type: GEN
Recorded: 12/13/2022 at 01:29:49 PM
Fee Amt: \$7.00 Page 1 of 1
Black Hawk County Iowa
SANDIE L. SMITH RECORDER

File 2023-00008967

Jeffrey P. Helland, 6109 Chancellor Drive, Cedar Falls, Iowa 50613-6916, (319)-266-0161

UNITED STATES PUBLIC LAND SURVEY CORNER CERTIFICATE OF

LAND SURVEY MONUMENTS SITUATED IN SECTION NO. 22, TOWNSHIP NO. 89 NORTH, RANGE NO. 11 WEST OF THE FIFTH PRINCIPAL MERIDIAN, BLACK HAWK COUNTY, IOWA.
PREVIOUSLY RECORDED IN BOOK 292 PAGE 130

(SHOW REASON FOR PREPARING THIS CERTIFICATE, THE EVIDENCE AND DETAILED PROCEDURES USED IN ESTABLISHING THE CORNER POSITIONS AND MONUMENTATION FOUND OR PLACED.)

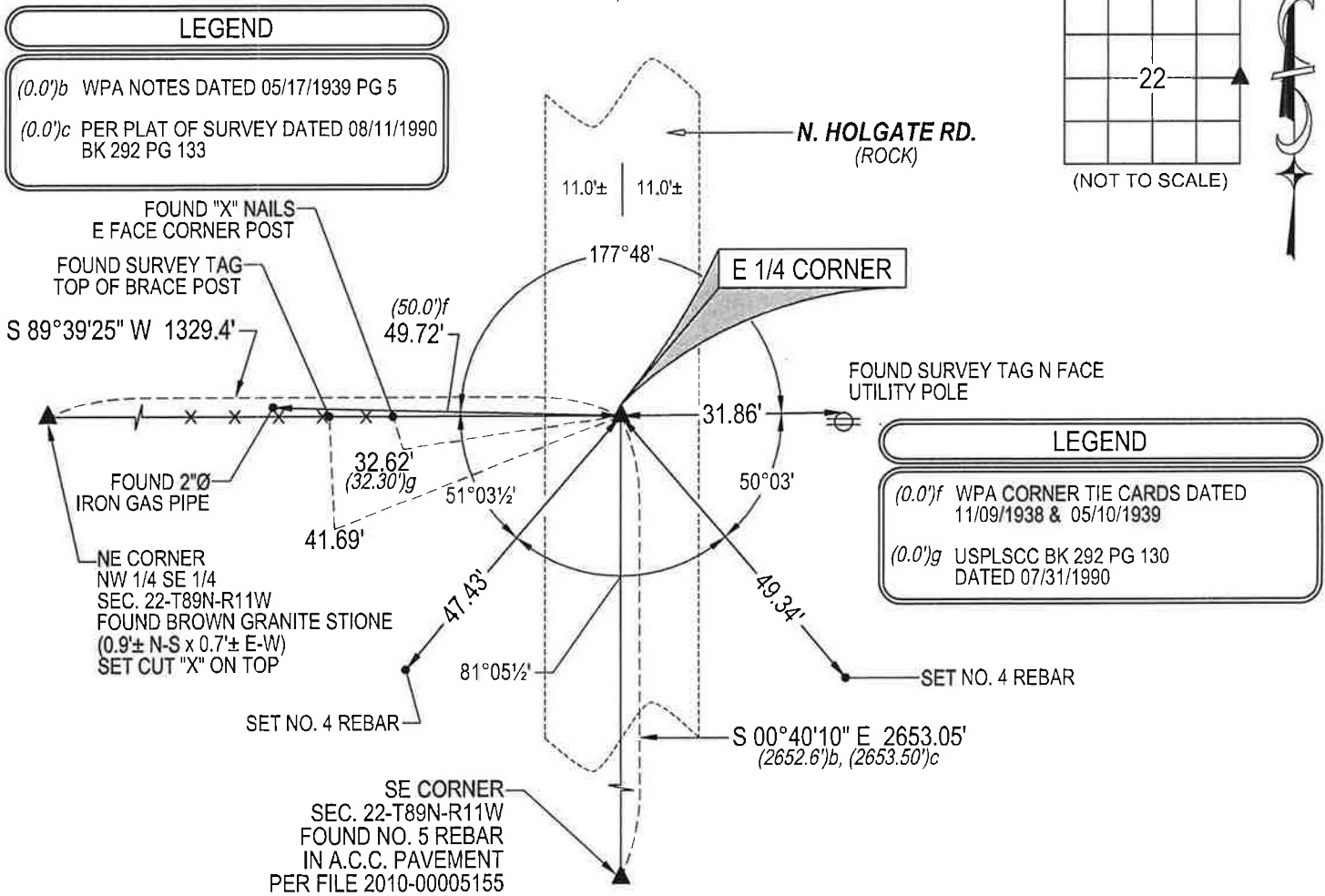
MONUMENT DESCRIPTION AND REMARKS:

MONUMENTATION HAS CHANGED. SURVEY COMPLETED IN THE SE 1/4 OF SEC. 22-T89N-R11W.

→ **E 1/4 CORNER:** WPA CORNER TIE CARD DATED 11/09/1938 & 05/10/1939 CALLS FOR [FOUND NIG***HEAD 20" x 10" x 10" IRON PIPE 2" x 30" LONG LOWERED EVIDENCE AND SET C.M. ON TOP 12" DEEP]. BLACK HAWK COUNTY TIES CALLS FOR [CONCRETE MONUMENT SET]. WPA NOTES DATED 05/17/1939 PAGE 5 CALLS FOR [FOUND NIG***HEAD 20" x 10" x 10" ALSO IRON PIPE 2" x 30"- LOWERED EVIDENCE AND SET C.M. ON TOP 12" UNDERGROUND]. USPLSCC BOOK 292 PAGE 130 DATED 07/31/1990 CALLS FOR [FOUND IRON PIN]. SEARCHED AREA WITH MAGNETIC DETECTOR AND EXCAVATED A HOLE 3'±Ø AND 3'± DEEP, FOUND 2"Ø IRON PIPE LEANING NORTHWESTERLY, AND FOUND BROKEN CONCRETE MONUMENT(BOTTOM 24") LEANING NORTHWESTERLY WITH TOP GONE. THEREFORE EXCAVATED AROUND SAID MONUMENT AND RESET IN ZIENTH POSITION BASED ON THE LCOATION OF ITS BASE AND SET CUT "X" ON TOP. UTILIZED SAID MONUMENT AS CORNER.

PLAN VIEW

(SHOW A MINIMUM OF THREE REFERENCE TIES TO DURABLE PHYSICAL OBJECTS, RELEVANT MONUMENTS AND PHYSICAL CONDITIONS THAT WILL ENABLE RECOVERY OF THE CORNER.)



(BEARINGS ARE ASSUMED)



HELLAND ENGINEERING & SURVEYING, LTD.
6109 Chancellor Drive
Cedar Falls, Iowa 50613-6916
(319)-266-0161

SHINER = 4d. NAIL & 1 5/16"Ø METAL SHINER
BRASS TAG = 4d. NAIL & 13/16"Ø BRASS TAG
OPC = PLASTIC CAP (O=ORANGE, R=RED, Y=YELLOW)
(00') RECORDED AS FILE NAME: 22-212-22.DWG
DRAWN BY: CDR



I hereby certify that this land surveying document was prepared and the related survey work was performed by me or under my direct personal supervision and that I am a duly licensed Professional Land Surveyor under the laws of the State of Iowa.
Jeffrey P. Helland
Jeffrey P. Helland
License Number 16264
My license renewal date is December 31, 2023.
All pages or sheets are covered by this seal except:

LIST CORNERS TO BE INDEXED			
CORNER	SECTION	TOWNSHIP	RANGE
E 1/4 CORNER	22	89N	11W
W 1/4 CORNER	23	89N	11W