

Reserved for County Recorder's use.



Doc ID: 011885100001 Type: GEN  
Recorded: 01/05/2023 at 05:41:23 PM  
Fee Amt: \$7.00 Page 1 of 1  
Black Hawk County Iowa  
SANDIE L. SMITH RECORDER

File **2023-00009686**

Jeffrey P. Helland, 6109 Chancellor Drive, Cedar Falls, Iowa 50613-6916, (319)-266-0161

UNITED STATES PUBLIC LAND SURVEY CORNER CERTIFICATE  
OF

LAND SURVEY MONUMENTS SITUATED IN SECTION NO. 22, TOWNSHIP NO. 89 NORTH, RANGE  
NO. 11 WEST OF THE FIFTH PRINCIPAL MERIDIAN, BLACK HAWK COUNTY, IOWA.  
PREVIOUSLY RECORDED IN N/A

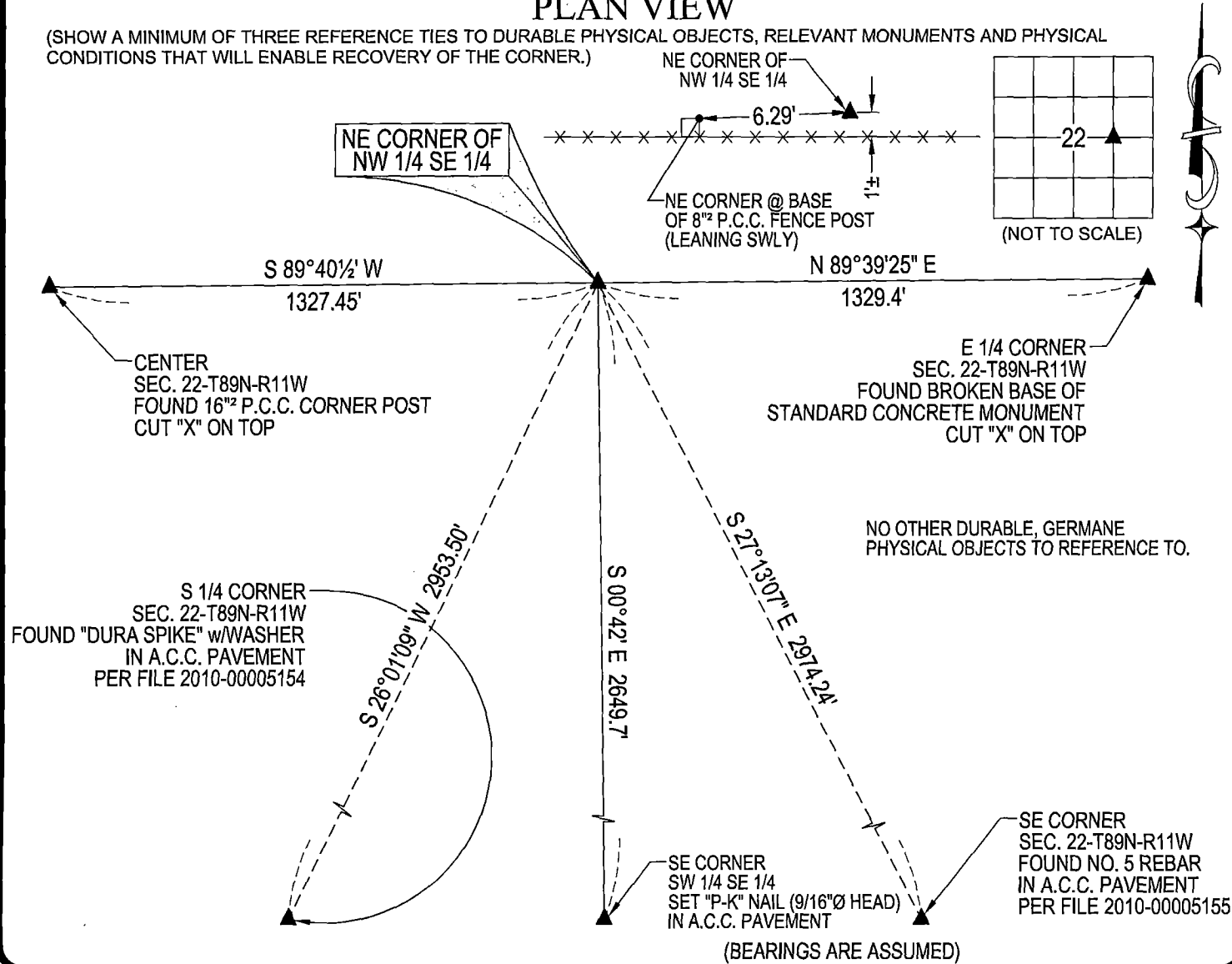
(SHOW REASON FOR PREPARING THIS CERTIFICATE, THE EVIDENCE AND DETAILED PROCEDURES USED IN ESTABLISHING THE  
CORNER POSITIONS AND MONUMENTATION FOUND OR PLACED.)

MONUMENT DESCRIPTION AND REMARKS:  
NO USPLSCC ON FILE. SURVEY COMPLETED IN THE SE 1/4 OF SEC. 22-T89N-R11W.

→ **NE CORNER OF NW 1/4 SE 1/4:** NO BLACK HAWK COUNTY ENGINEER TIES AVAILABLE NOR ANY OTHER PUBLIC  
DOCUMENTATION OF THE HISTORY AND PERPETUATION OF CORNER WERE AVAILABLE. STARTED PROBING AT THE  
MIDPOINT OF A LINE BETWEEN THE CENTER AND THE E 1/4 CORNER. FOUND BROWN GRANITE STONE 0.9'±N-S x  
0.7'±E-W (TOP VIEW) 0.2'± DEEP. CUT "X" ON TOP OF STONE AND SET NO. REBAR (24" LONG) 0.39' SOUTH OF SAID CUT  
"X" FOR MAGNETIC DETECTION.

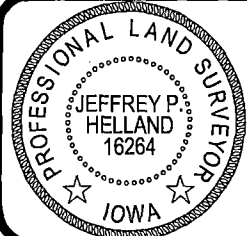
PLAN VIEW

(SHOW A MINIMUM OF THREE REFERENCE TIES TO DURABLE PHYSICAL OBJECTS, RELEVANT MONUMENTS AND PHYSICAL  
CONDITIONS THAT WILL ENABLE RECOVERY OF THE CORNER.)



HELLAND ENGINEERING & SURVEYING, LTD.  
6109 Chancellor Drive  
Cedar Falls, Iowa 50613-6916  
(319)-266-0161

SHINER = 4d. NAIL & 1 5/16" Ø METAL SHINER DRAWN BY: JPH  
BRASS TAG = 4d. NAIL & 13/16" Ø BRASS TAG  
OPC = PLASTIC CAP (O=ORANGE, R=RED, Y=YELLOW)  
(00') RECORDED AS FILE NAME: 22-212-41.DWG



I hereby certify that this land surveying document was prepared  
and the related survey work was performed by me or under my  
direct personal supervision and that I am a duly licensed  
Professional Land Surveyor under the laws of the State of Iowa.  
*Jeffrey P. Helland* 12/19/2022  
Jeffrey P. Helland  
License Number 16264  
My license renewal date is December 31, 2023.  
All pages or sheets are covered by this seal except:

CORNER	SECTION	TOWNSHIP	RANGE
NE COR. NW 1/4 SE 1/4	22	89N	11W
SE COR. SW 1/4 NE 1/4	22	89N	11W
SW COR. SE 1/4 NE 1/4	22	89N	11W
NW COR. NE 1/4 SE 1/4	22	89N	11W