

DANIEL T. CRAWFORD, P.E. & L.S.      Crawford Engineering & Surveying, Inc., Independence, Iowa      319/334-7077

UNITED STATES PUBLIC LAND SURVEY CORNER CERTIFICATE  
OF

Land Survey Monuments situated in Section 21, Township 89 N, Range 11 W, of the Fifth Principal Meridian, Black Hawk County, Iowa.

Previously recorded in MISC. N/A BK. 330 p. 860 (RT) in County Recorder's Office.  
(By same P.E.S.)

Monument Description and Remarks:

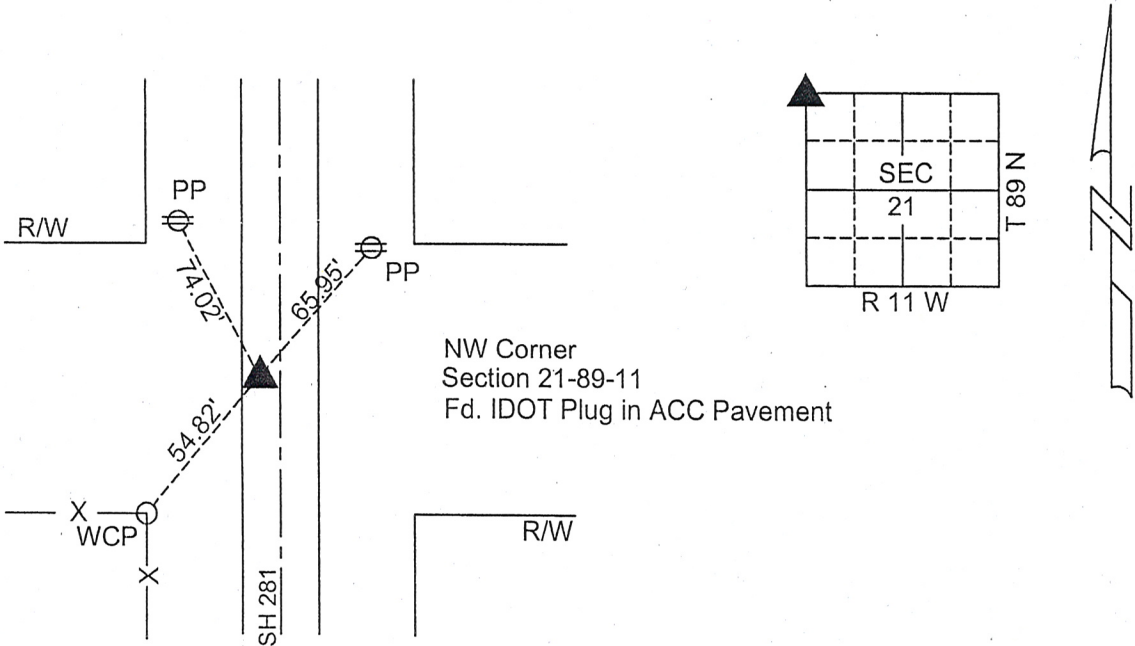
Reason for preparing certificate: Current certificate is not on file.

Evidence and detailed procedure used to establish corner position: Corner position previously established and monumented.

Monumentation found or placed: Found IDOT Plug in ACC Pavement.

PLAN-VIEW

(Show a minimum of three reference ties to durable physical objects, relevent monuments and physical conditions that will enable recovery of the corner).



I hereby certify that the survey work was completed and this land surveying document was prepared by me or under my direct personal supervision and that I am a duly licensed land surveyor under the laws of the State of Iowa.

Signature: Daniel T. Crawford  
DANIEL T. CRAWFORD, P.E. & L.S.

Date: 4-2-09 Reg. No. 8812

My license renewal date is December 31, 2009

Corners	List Corners to be Indexed		
	Section	Twp.	Range
NW Corner	21	89 N	11 W

SEAL

