

## UNITED STATES PUBLIC LAND SURVEY CORNER CERTIFICATE

OF

Land Survey Monuments situated in Section 21, Township 89 N, Range 11 W, of the Fifth Principal Meridian, Black Hawk County, Iowa.  
 Previously recorded in Corners not previously recorded in County Recorder's Office.  
 (book, page, document number, etc.)

(Show reason for preparing this certificate, the evidence and detailed procedures used in establishing the corner positions and monumentation found or placed.)

Monument Description and Remarks:

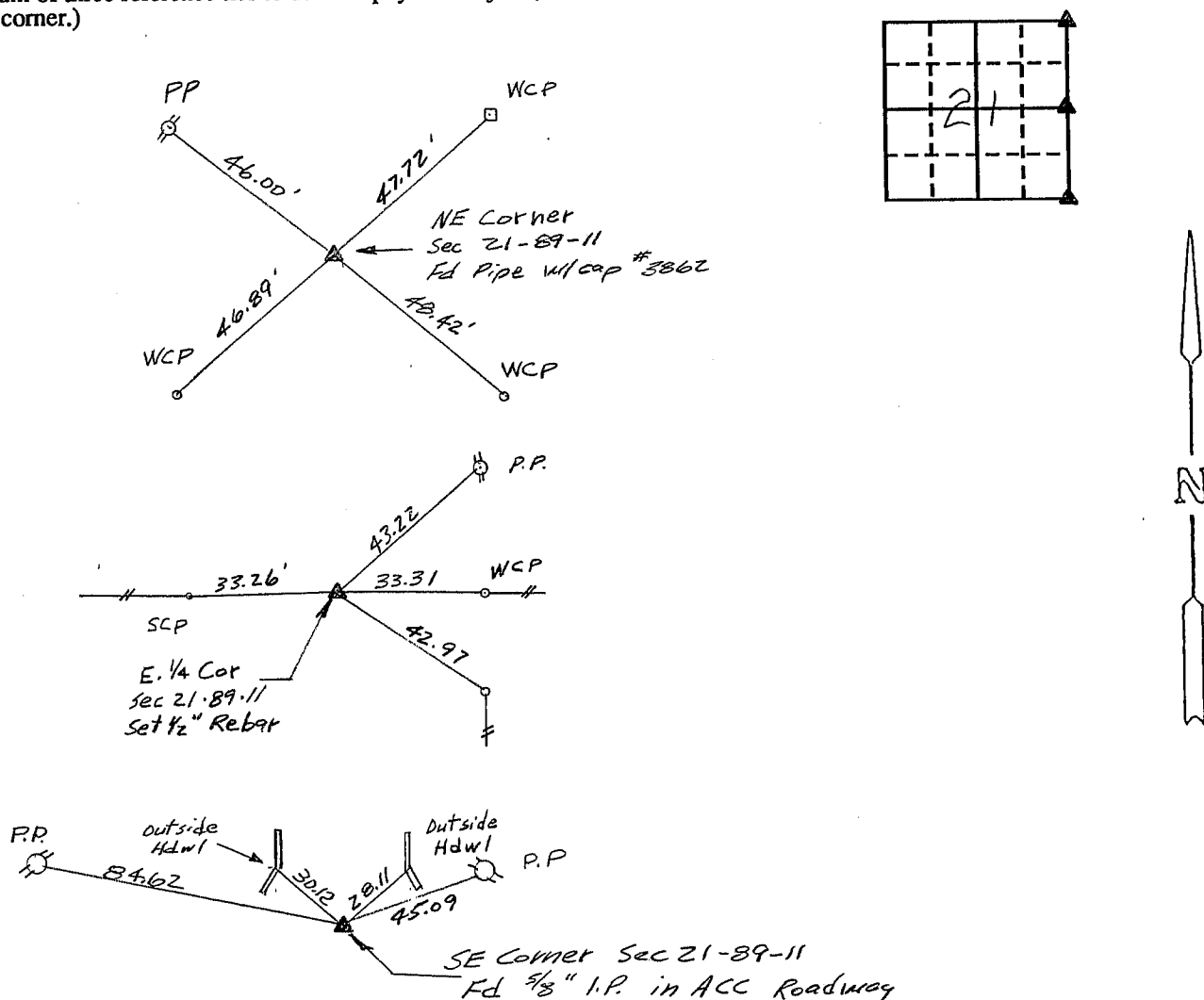
NE Corner Sec 21 - Fd. Pipe w/ Reg. cap #3862

E. 1/4 Corner Sec 21 - Corner Mon. Obliterated Reset from 1939 Field Notes of survey of East section line (Section 21-89-11)

SE Corner Sec 21 - Fd. 5/8" I.P. in A.C.C. Roadway

## PLAN - VIEW

(Show a minimum of three reference ties to durable physical objects, relevant monuments and physical conditions that will enable recovery of the corner.)



I hereby certify that the survey work was completed and this certificate was prepared by me or under my direct personal supervision and that I am a duly registered land surveyor under the laws of the state of Iowa.

Signature:

Name typed or printed:

Date:

5-2-94

Reg. No.

8812

Corners	List Corners to be Indexed		
	Section	Twp	Range
NE	21	89 N	11 W
E. 1/4	21	89 N	11 W
SE	21	89 N	11 W

2/13/2001

To date, this document is "NOT" on file w/ CO. recorder.

*DT*

SEAL

