

Paul H. Helland, 1107 Technology Parkway, Cedar Falls, Iowa 50613-6951, (319)-266-0161

UNITED STATES PUBLIC LAND SURVEY CORNER CERTIFICATE  
OF

LAND SURVEY MONUMENTS SITUATED IN SECTION NO. 21, TOWNSHIP NO. 89 NORTH, RANGE  
NO. 11 WEST OF THE FIFTH PRINCIPAL MERIDIAN, BLACK HAWK COUNTY, IOWA.  
PREVIOUSLY RECORDED IN N/A

(SHOW REASON FOR PREPARING THIS CERTIFICATE, THE EVIDENCE AND DETAILED PROCEDURES USED IN ESTABLISHING THE  
CORNER POSITIONS AND MONUMENTATION FOUND OR PLACED.)

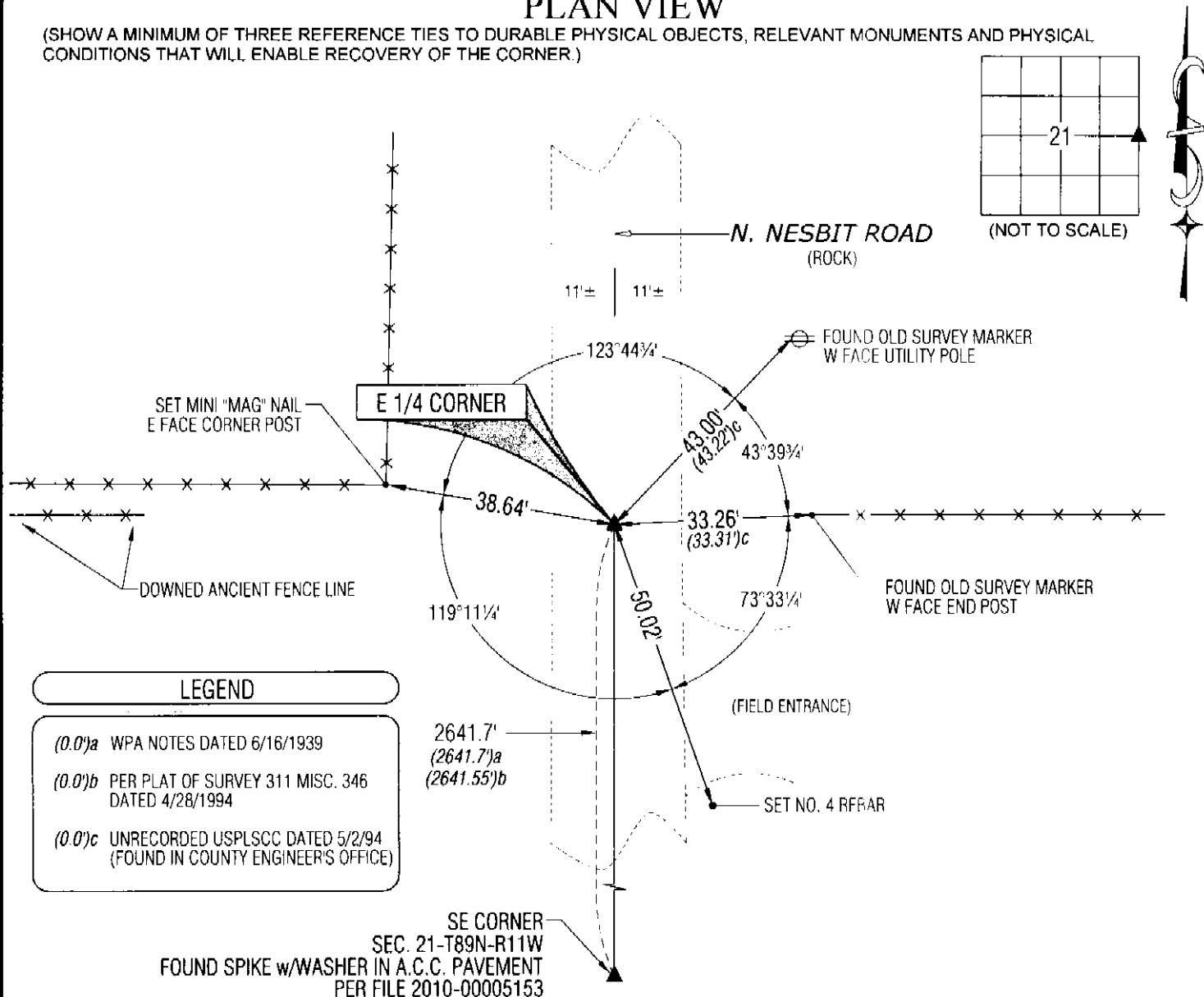
MONUMENT DESCRIPTION AND REMARKS:

NO USPLSCC ON FILE. SURVEY COMPLETED IN THE SE 1/4 OF SEC. 21-T89N-R11W.

**E 1/4 CORNER:** WPA NOTES DATED 6/16/39 CALLS FOR FOUND LIMESTONE 15"x12"x5" ALSO REMNANT OF OLD OAK HUB.  
LOWERED EVIDENCE AND SET C.M. ON TOP 12" UNDERGROUND. LAND CORNER SURVEY IOWA STATE HIGHWAY  
COMMISSION DATED MAY 14 TO MAY 22 1940 CALLS FOR FOUND C.M. AND LIMESTONE AND OAK STAKE. BLACK HAWK  
COUNTY ENGINEER TIES NO DATE CALLS FOR SET 1/2" REBAR. USPLSCC NOT ON FILE WITH COUNTY RECORDER DATED  
5/2/94 #8812 CALLS FOR CORNER MON. OBLITERATED RESET FROM 1939 FIELD NOTES OF SURVEY OF EAST SECTION LINE  
SET 1/2" REBAR. FOUND NO. 4 REBAR (0.3' DEEP) w/YPC #8812 PER UNRECORDED USPLSCC.

PLAN VIEW

(SHOW A MINIMUM OF THREE REFERENCE TIES TO DURABLE PHYSICAL OBJECTS, RELEVANT MONUMENTS AND PHYSICAL  
CONDITIONS THAT WILL ENABLE RECOVERY OF THE CORNER.)



**HES** HELLAND ENGINEERING & SURVEYING, LTD.  
1107 Technology Parkway  
Cedar Falls, Iowa 50613-6951  
(319)-266-0161

SHINER = 8D NAIL & 1 5/16"Ø METAL SHINER  
BRASS TAG = 8D NAIL & 13/16"Ø BRASS TAG  
OPC = PLASTIC CAP (O=ORANGE, R=RED, Y=YELLOW)  
(00) RECORDED AS FILE NAME: 12-224-22.DWG

I hereby certify that this land surveying document was prepared  
and the related survey work was performed by me or under my  
direct personal supervision and that I am a duly licensed Land  
Surveyor under the laws of the State of Iowa.  
*Paul H. Helland* 11/21/12  
Paul H. Helland  
License Number 6505  
My license renewal date is December 31, 2013.  
All pages or sheets are covered by this seal except:

LIST CORNERS TO BE INDEXED			
CORNER	SECTION	TOWNSHIP	RANGE
E 1/4 CORNER	21	89N	11W
W 1/4 CORNER	22	89N	11W

File Number: 2013-00010508 Seq: 1