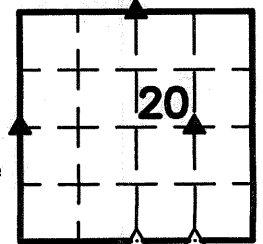


Zeb J. Stanbrough PLS, Ryken Engineering, 711 Park Avenue, Ackley, Iowa 50601 - Ph. 641-847-3273 - Fax 641-847-2303

UNITED STATES PUBLIC LAND SURVEY CORNER CERTIFICATE OF

Land Survey Monuments situated in Section 20, Township 89 North,
Range 11 West, of the Fifth Principal Meridian, Black Hawk County, Iowa,
Previously recorded in (see below) in County Recorder's Office
S¼ Cor. - Book 292, Page 31 N¼ Cor. - Not Applicable NW Cor. E½ SE¼ - Not Applicable
W¼ Cor. - Not Applicable SW Cor. E½ SE¼ - Not Applicable
These corners were used for a survey in this section for Kent R. and Carol V. Charley. Basis of bearing for
this corner cert. can be found on the associated plat of survey filed in the Co. Rec's Office for this section.

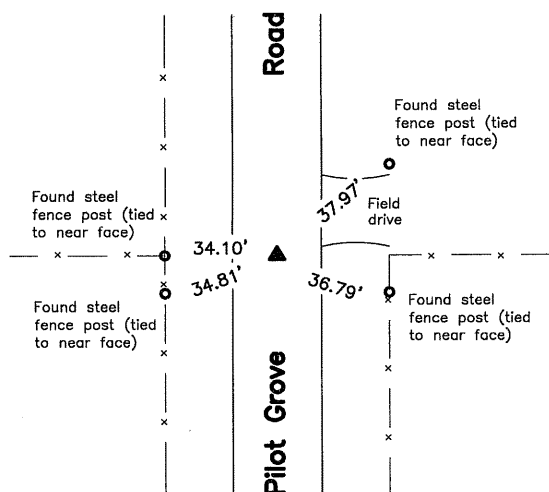


Legend

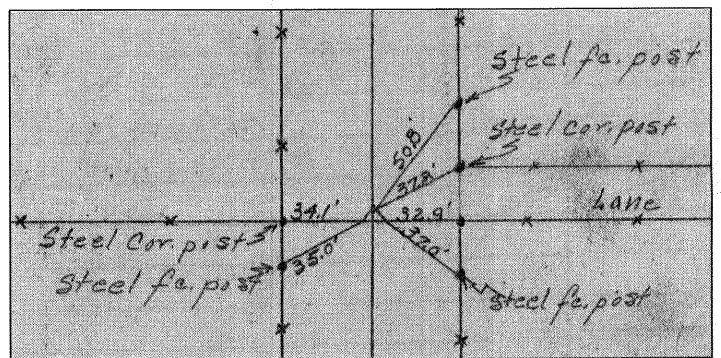
BC = Nail with Bottle Cap
BP = Brace Post
CP = Corner Post
CMP = Corrugated Metal Pipe
CM = 4" Sq Concrete Monument with
1/2"Ø iron rod in center (tie to rod)
CX = Cut 'X'
GP = Gate Post
ID = Inside Diameter
OD = Outside Diameter
PP = Power Pole
PW = Nail with Plastic Washer
RCP = Reinforced Concrete Pipe
RH = Red Head (Nail in wire)
ROW = Right of Way
RW = Nail with Reflective Round Washer
R/W = Iron ROW Rail
SFP = Steel 'T' Post
SW = Nail with Square Metal Washer
TP = Telephone Pedestal
TW = Nail with Round Metal Washer
WFP = Wood Fence Post
X = X Nails



W¼ Cor.



CO ENGR'S RECORD TIES



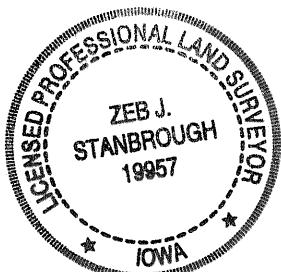
Monument Description, Remarks, and Plan View:

W¼ Cor. - History of Corner =
1866, Apr. 13 - 'Mound and Pit' by John Ball County Surveyor per County Auditor's Survey Record Book 1, Page 21.
1866, Jun. 5 - 'Mound' by John Ball County Surveyor per County Auditor's Survey Record Book 1, Page 53.
1939, May, 1 - 'Found n.....head stone 12"x10"x7", Iron Pipe ¾"x11" Long. Lowered evidence and set C.M. on top 12" deep' per
County Engineer's Township 89 North, Range 11 West, WPA Cornerstone Tie Book 2, Page 14.
1940, May 14 - "Found C.M. over granite and iron pin" by G.R. Elliot per County Auditor's Surveyors Record Book 1, Page 180.
1995, Jan. 18 - 'FOUND ½" PIN' by Paul H. Helland per County Recorder's Miscellaneous Book 314 Page 327.

Previous County Engineer's ties indicate that corner is monumented with: "Iron pin & n.....head" on Nov. 12, 1930.
'Found n..... stone 12"x10"x7" Iron Pipe ¾"x11" Long. Lowered evidence and set C.M. on Top 12" deep.' on May 1, 1939 with ties as shown above.

Corner Recovery =
Searched a 10.0'Ø area with metal detector, excavated 1.5'Ø x 1.5' deep hole and found ½"Ø x 1.0' iron rod, 0.3' deep on top of a concrete monument with brass disk 1.3' deep in apparent centerline of traveled surface of gravel road North-South and in-line with fenceline's East and West. Location of monument found matches that of record, monuments found match that of record, and record ties are within reason. Therefore, removed ½"Ø iron rod and set ¾"Ø x 1.0' Aluminum capped iron rod (#19957), 0.3' deep on center of brass disk in concrete monument to raise up monumentation and used it as the correct corner. All ties are plumb distance unless indicated otherwise.

This certificate is being prepared because there are no certificates on file for this corner.



I hereby certify that this land surveying document was prepared and the related survey work was performed by me or under my direct personal supervision and that I am a duly licensed Land Surveyor under the laws of the State of Iowa.

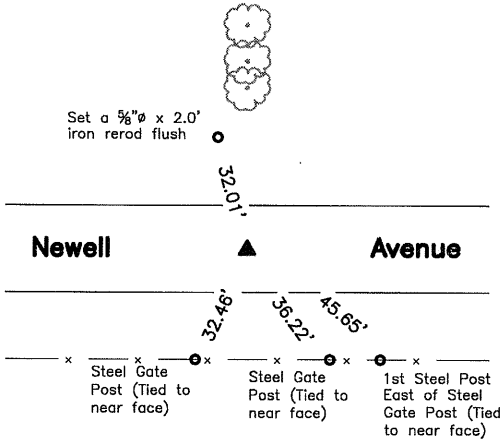
Zeb J. Stanbrough, PLS
Date: 7-18-2011 License number: 19957
My license renewal date is December 31, 2011

Pages or sheets covered by this seal: 1, 2, & 3

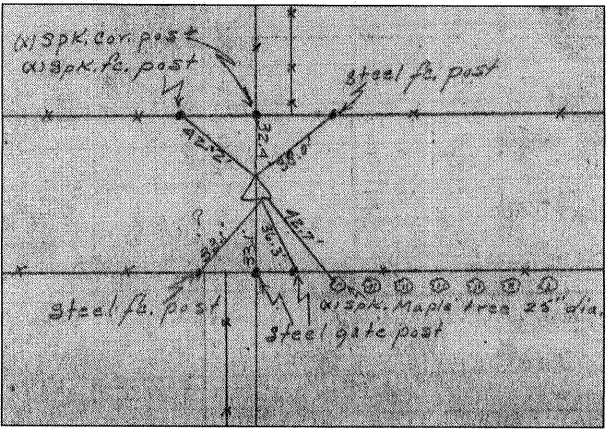
List Corners to be Indexed

Corners	Section	Twp	Range
W¼ Cor.	20	T89N	R11W
N¼ Cor.	20	T89N	R11W
S¼ Cor.	20	T89N	R11W
SW Cor. E½ SE¼	20	T89N	R11W
NW Cor. E½ SE¼	20	T89N	R11W

N¼ Cor.



CO ENGR'S RECORD TIES



Monument Description, Remarks, and Plan View:

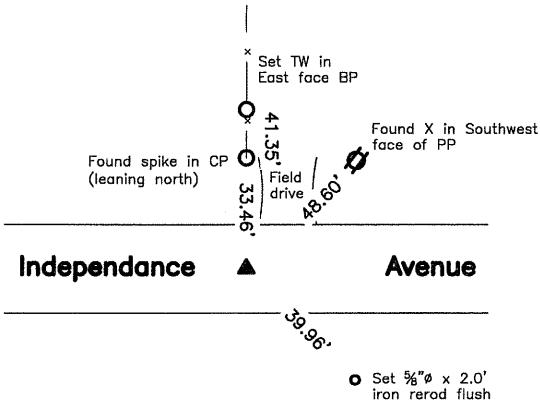
- N¼ Cor. - History of Corner =
- 1866, Jul. 12 - County Auditor's Survey Record Book 1, Page 53 indicates usage of corner but not type of monumentation by John Ball County Surveyor.
 - 1866, Jun. 5 - "Mound" by John Ball County Surveyor per County Auditor's Survey Record Book 1, Page 53.
 - No Date - "Stone & I.B." per County Auditor's Surveyors Record Book 1, Page 118.
 - 1932, Mar. 17 - '¾" Iron Pipe' per County Engineer's Field Book 115, Page 42.
 - 1939, May 2 - 'Found Iron pipe ¾" x 26". Lowered evidence and set C.M. 12" deep.' per County Engineer's Township 89 North, Range 11 West, WPA cornerstone Tie Book 1, Page 59.
 - 1982, Oct. 26 - "FOUND CONC. MONUMENT" by Steven L. Busse per County Recorder's Miscellaneous Book 248, Page 82.
 - 1999, Apr. 8 - "Fd. WPA Monument 0.8' below road" by Daniel T. Crawford per County Engineer's Section Corner Tie Book Township 89 North, Range 11 West.

Previous County Engineer's ties indicate that corner is monumented with: "Found Iron Bar That was set by County" '¾" iron bar' on Mar. 17, 1932. 'Found Iron Pipe ¾" x 26" set C.M. 12" deep' on May 2, 1939 with ties as shown above.

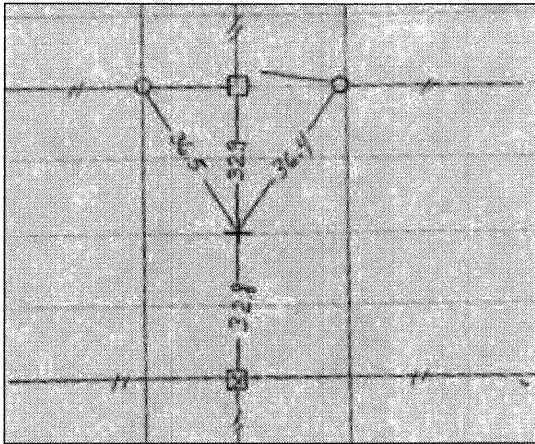
Corner Recovery =
Searched a 5.0'Ø area with metal detector, excavated 1.0'Ø x 0.9' deep hole and found a concrete monument with brass disk, 0.8' deep. Monument is in apparent centerline of traveled surface of gravel road East-West. Location of monument found matches that of record, monument found match that of record, and record ties are within reason. Therefore, used center of brass disk in concrete monument, 0.8' deep as the correct corner. All ties are plumb distance unless indicated otherwise.

This certificate is being prepared because there are no longer three valid ties of record.

S¼ Cor.



CO ENGR'S RECORD TIES



Monument Description, Remarks, and Plan View:

- S¼ Cor. - History of Corner =
- 1866, Apr. 6 - "Mound" by John Ball County Surveyor per County Auditor's Survey Record Book 1, Page 23.
 - 1866, Jun. 5 - "Mound and Pit" by John Ball County Surveyor per County Auditor's Survey Record Book 1, Page 53.
 - 1940, May 14 - "Set lead plug on Ø pavement" by G.R. Elliot per County Auditor's Surveyor's Record Book 1, Page 180.
 - 1941, Dec. - "Found Plug on Ø of pavement U.S. HY# 20" per County Engineer's WPA Cornerstone Tie Township 89 North, Range 11 West, Book 2, Page 12.
 - 1990, Jul. 23 - "FOUND CONCRETE NAIL" by Harold F. Michels per County Recorder's Book 292, Pages 31 and 33.
 - 2000, Feb. 10 - "concrete nail" per unrecorded field work by Paul H. Helland.

Previous County Engineer's ties do indicate that corner is monumented, but do not indicate type of monumentation at corner with ties as shown above.

Corner Recovery =
Searched a 20.0'Ø area around a point calculated by using County Auditor's Surveyor's Record Book 1, Page 180 record distance from the SE Corner and the plumb distance from the one remaining tie from County Auditor's Surveyor's Record Book 1, Page 180 with a metal detector and found nothing. Excavated a 0.5' (East-West) x 0.7' (North-South) x 0.8' deep hole at said point and found a lead plug in spoil pile during excavation. Location of monument found matches that of record, monument found matches that of record, and one record tie is within reason, but exact position of lead plug could not be determined. Therefore, set ¾"Ø x 4.0' Aluminum capped iron rod (#19957) at said point, 0.2' deep stamped '20', and '24' to perpetuate monumentation and used it as the correct corner. Monument set is in apparent centerline of traveled surface of asphalt road East-West and in-line with fenceline North. All ties are plumb distance unless indicated otherwise.

This certificate is being prepared because there is a change to monumentation of record.

Legend

- | | | |
|---------------------------------------|--|------------------------------------|
| BC = Nail with Bottle Cap | ID = Inside Diameter | R/W = Iron ROW Rail |
| BP = Brace Post | OD = Outside Diameter | SFP = Steel 'T' Post |
| CP = Corner Post | PP = Power Pole | SW = Nail with Square Metal Washer |
| CMP = Corrugated Metal Pipe | PW = Nail with Plastic Washer | TP = Telephone Pedestal |
| CM = 4" Sq Concrete Monument with | RCP = Reinforced Concrete Pipe | TW = Nail with Round Metal Washer |
| 1/2"Ø iron rod in center (tie to rod) | RH = Red Head (Nail in wire) | WFP = Wood Fence Post |
| CX = Cut 'X' | ROW = Right of Way | X = X Nails |
| GP = Gate Post | RW = Nail with Reflective Round Washer | |



Monument Description, Remarks, and Plan View:

SW Cor. E $\frac{1}{2}$ SE $\frac{1}{4}$ — History of Corner =

1940, May 14 - "cut (X) on Pavement in line with fence north and on Sec line (X) is 1.1 South of \mathbb{C} pavement." by G.R. Elliott per County Auditor's Surveyors Record Book 1, Page 180.

2000, Feb. 16 – County Recorder's Miscellaneous Book 337, Page 257 indicates usage of corner but not type of monumentation at corner by Paul H. Helland.

2001, May 2 - County Recorder's Miscellaneous Book 342, Page 698 indicates usage of corner but not type of monumentation at corner by Paul H. Helland.

Previous and current County Engineer's ties do not indicate that corner is monumented.

Corner Recovery =

Searched a 20.0'Ø area around a point 1325.7' from the SE Corner and online from the SE Corner to the S¼ Corner with metal detector and found nothing. Did not excavate at said point as road surface is now asphalt and not concrete as previously recorded, thereby making it very difficult to find Cut "X". Therefore, set a Survey Mark nail, flush at said point and used it as the correct corner. Monument set is 1.1'± South of apparent centerline of traveled surface of asphalt road East—West and in—line with fenceline North. All ties are plumb distance unless indicated otherwise. This certificate is being prepared because there are no certificates on file for this corner.

NW Cor. E $\frac{1}{2}$ SE $\frac{1}{4}$

Monument Description, Remarks, and Plan View:

NW Cor. E $\frac{1}{2}$ SE $\frac{1}{4}$ - History of Corner =

1994, Apr. 14 - 'Found 1"O.D. Iron Pinch Pipe, 0.5' above grade' by Paul H. Helland per an unrecorded plat of survey.

Previous and current County Engineer's ties do not indicate that corner is monumented.

Corner Recovery =

Searched a 5.0'± area with metal detector and found a 1" O.D. iron pinch pipe, 0.3' exposed. Monument is 0.5'± South of fenceline West and 0.5'± East of fenceline North. Location of found monument is within reason of matching a theoretical split from a John Ball Survey dated 1866 per County Auditor's Survey Record Book 1, Page 53. Therefore, used 1" O.D. iron pinch pipe 0.3' exposed as the correct corner. All ties are plumb distance unless indicated otherwise.

This certificate is being prepared because there are no certificates on file for this corner.

Legend

BC = Nail with Bottle Cap
BP = Brace Post
CP = Corner Post
CMP = Corrugated Metal Pipe
CM = 4" Sq Concrete Monument
CX = Cut 'X'
GP = Gate Post

ID = Inside Diameter
OD = Outside Diameter
PP = Power Pole
PW = Nail with Plastic Washer
RCP = Reinforced Concrete Pipe
RH = Red Head (Nail in wire)
ROW = Right of Way
RW = Nail with Reflective Round Washer

R/W = Iron ROW Rail
SFP = Steel 'T' Post
SW = Nail with Square Metal Washer
TP = Telephone Pedestal
TW = Nail with Round Metal Washer
WFP = Wood Fence Post
X = X Nails

