

UNITED STATES PUBLIC LAND SURVEY CORNER CERTIFICATE
OF

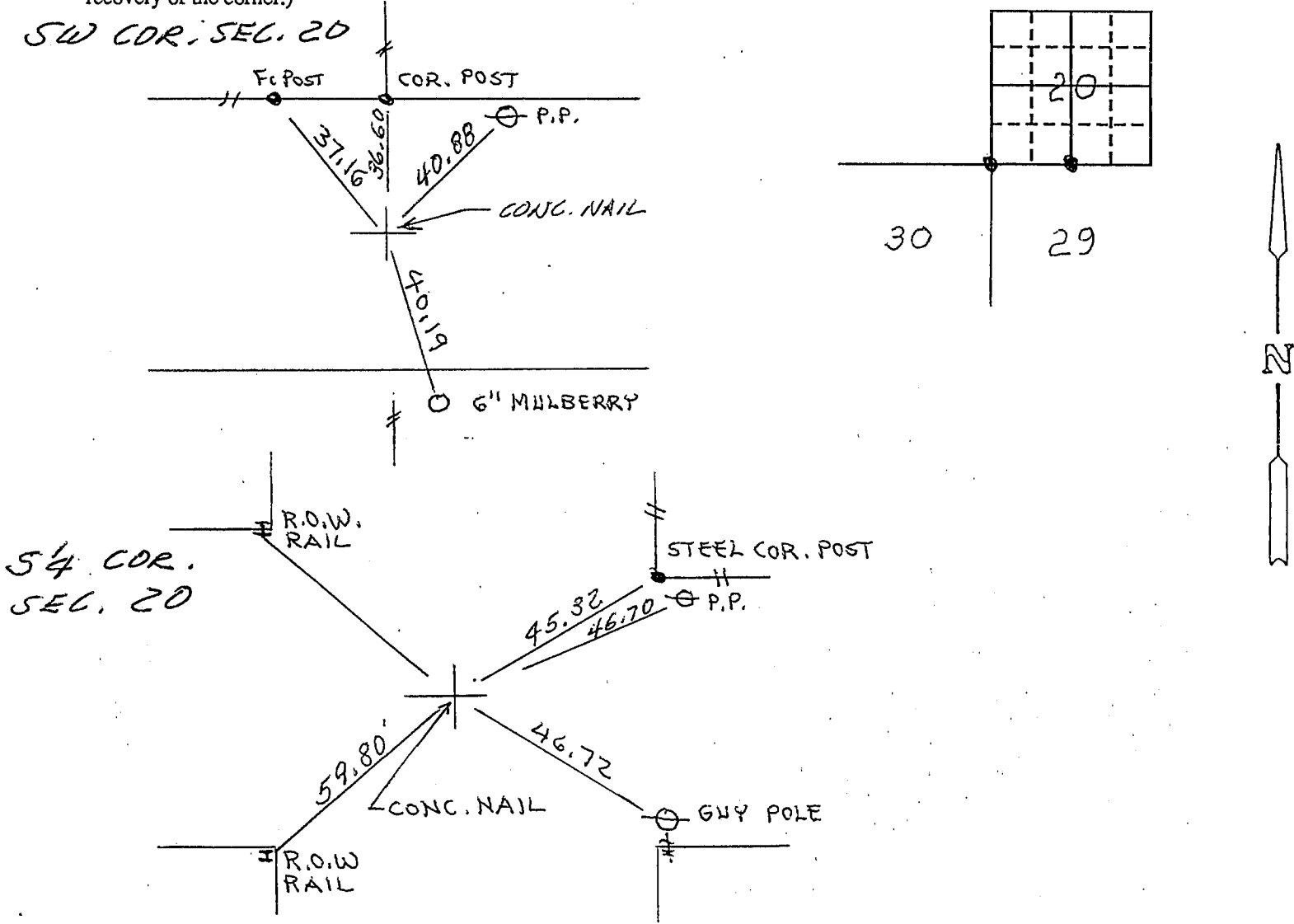
Land Survey Monuments situated in Section 20, Township 89 North, Range 11 West, of the Fifth Principal Meridian, Black Hawk County, Iowa.
Previously recorded in Book (none), Page .

(Show reason for preparing this certificate, the evidence and detailed procedures used in establishing the corner positions and monumentation found or placed.)

Monument Description and Remarks: SW Corner: Found concrete nail in paving. Checked old ties. Placed new ties.

PLAN - VIEW

(Show a minimum of three reference ties to durable physical objects, relevant monuments and physical conditions that will enable recovery of the corner.)

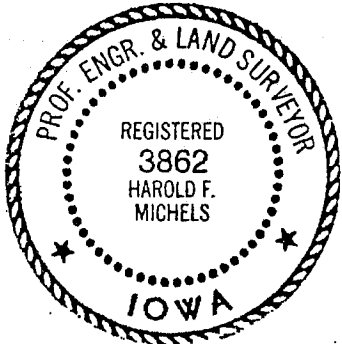


I hereby certify that the survey work was completed and this certificate was prepared by me or under my direct personal supervision and that I am a duly registered land surveyor under the laws of the state of Iowa.

Harold F. Michels

REGISTERED LAND SURVEYOR NO. 3862

SEAL



List Corners to be Indexed

Corners	Section	Twp	Range
SW	20	89	11
S $\frac{1}{4}$	20	89	11

OVER →