

FILED FOR RECORD Feb 17, 2000 AT 017194
3:00 P M., AND RECORDED IN BOOK 337
 OF MISC PAGE 258
Catherine S. Less RECORDER
 FEE 1-5.00/
 PAUL HELLAND

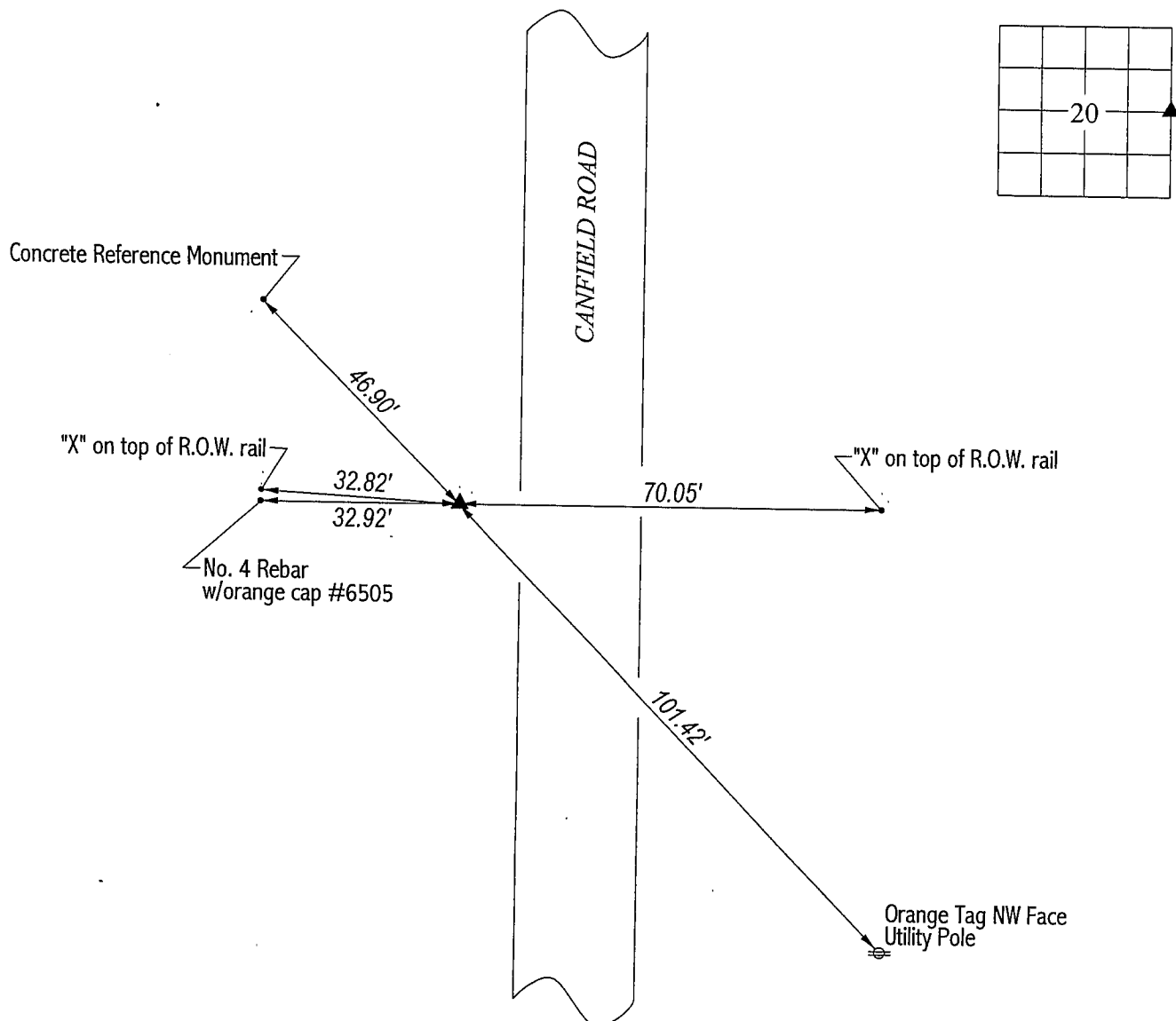
UNITED STATES PUBLIC LAND SURVEY CORNER CERTIFICATE OF

PREVIOUSLY RECORDED IN BOOK _____, PAGE _____.

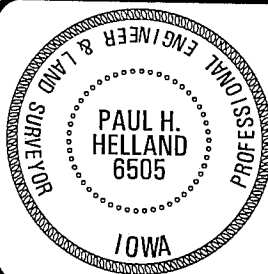
MONUMENT DESCRIPTION AND REMARKS:

E 1/4 CORNER: Found Concrete Monument w/brass cap, 0.4' deep, No. 4 rebar on East side of monument, and a railroad spike on the South side of monument. Monument is 20.1' West of centerline joint of Canfield Road (P.C.C. pavement).

(SHOW A MINIMUM OF THREE REFERENCE TIES TO DURABLE PHYSICAL OBJECTS, RELEVANT MONUMENTS AND PHYSICAL CONDITIONS THAT WILL ENABLE RECOVERY OF THE CORNER.)



FILE NAME: 00-119CC.DRG



Paul H. Helland
License Number 6505
My license renewal date is December 31, 2001.
All pages or sheets are covered by this seal except:

LIST CORNERS TO BE INDEXED			
<u>CORNER</u>	<u>SECTION</u>	<u>TOWNSHIP</u>	<u>RANGE</u>
E 1/4 CORNER	20	89N	11W

BK 337 p. 258