

Reserved for County Recorder's use.



Doc ID: 009362630001 Type: GEN
 Recorded: 08/21/2018 at 01:19:41 PM
 Fee Amt: \$7.00 Page 1 of 1
 Black Hawk County Iowa
 SANDIE L. SMITH RECORDER

File **2019-00002972**

* Kyle J. Helland, 1107 Technology Parkway, Cedar Falls, Iowa 50613-6951, (319)-266-0161

UNITED STATES PUBLIC LAND SURVEY CORNER CERTIFICATE OF

LAND SURVEY MONUMENTS SITUATED IN SECTION NO. 19, TOWNSHIP NO. 89 NORTH, RANGE NO. 11 WEST OF THE FIFTH PRINCIPAL MERIDIAN, BLACK HAWK COUNTY, IOWA.
 PREVIOUSLY RECORDED IN 321 MISC. 814

(SHOW REASON FOR PREPARING THIS CERTIFICATE, THE EVIDENCE AND DETAILED PROCEDURES USED IN ESTABLISHING THE CORNER POSITIONS AND MONUMENTATION FOUND OR PLACED.)

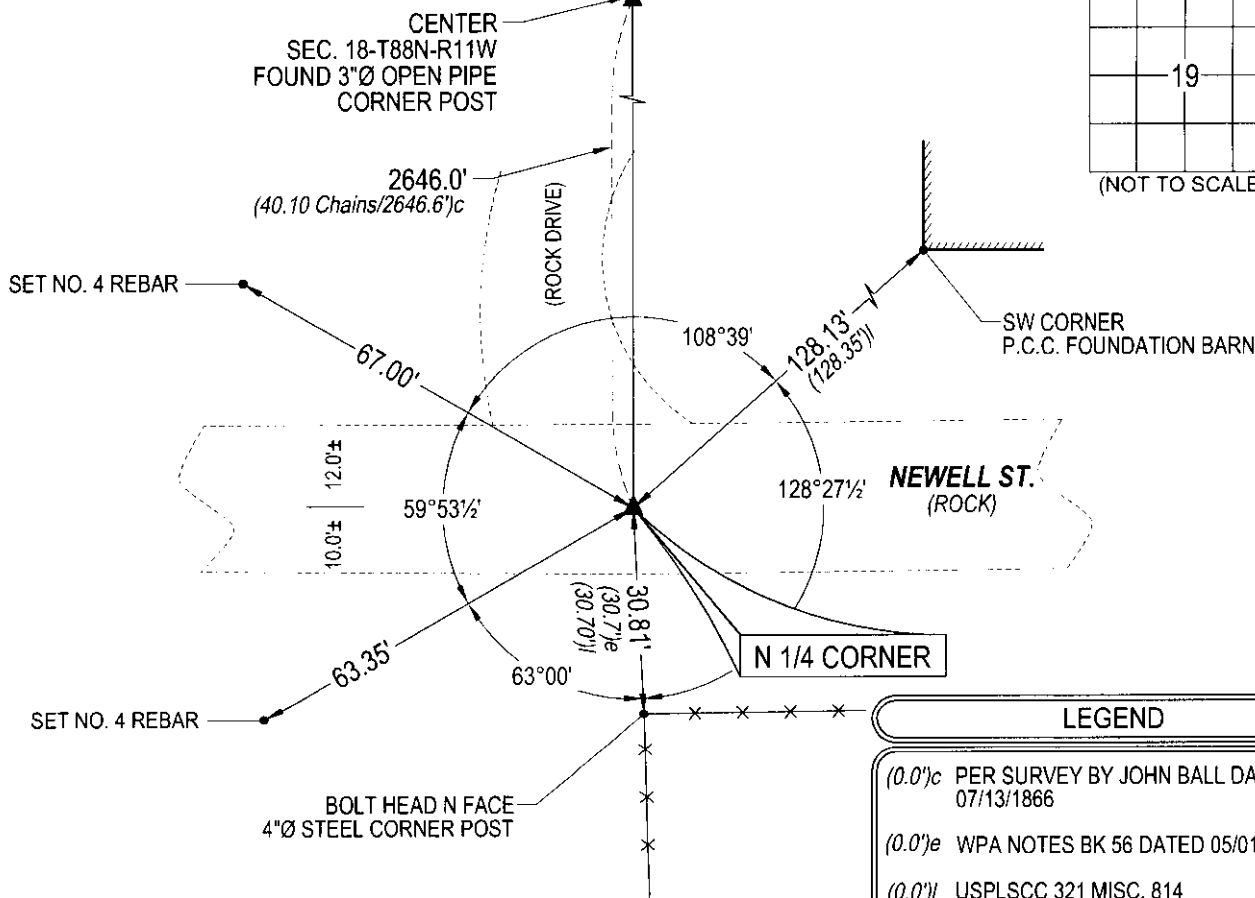
MONUMENT DESCRIPTION AND REMARKS:

ONLY TWO REFERENCE TIE REMAINS. SURVEY COMPLETED IN THE NW FRL 1/4 OF SEC. 18-T89N-R11W.

→ **N 1/4 CORNER:** JOHN BALL HISTORICAL SURVEY PAGE 81 DATED 07/13/1866 CALLS FOR [STONE]. WPA NOTES PAGE 56 DATED 05/01/1939 CALLS FOR [FOUND *****HEAD 10"X8"X3" REMNANT OF OLD OAK HUB LOWERED EVIDENCE AND SET C.M. ON TOP 18" DEEP]. USPLSCC 321 MISC. 814 DATED 04/21/1996 CALLS FOR [DUG 5'X3'X2' @ CO. TIE LOCATION. BOTTOM OF HOLE IN APPARENT UNDISTURBED BLACK DIRT. USED PROB ROD IN BOTTOM-BUT NOTHING. USED COR. TIE TO SOUTH (1939 WPA) STEEL COR POST & PROBED E-W DIST SW COR SEC TO SE COR SECTION PER WPA NOTES 1939=5216.2'/1996 EDM=5218.04', 1939 SEC TO S 1/4=2563', 1996=2563.90'. SET 1/2"X24" REBAR & CAP 8033 3" DEEP @ 30.70' N OF SO. COR POST @ 2563.90' EAST OF SW CORNER.] SERCHED ARE FOUND NO. 4 REBAR w/DAMAGED YPC 0.3' DEEP.

PLAN VIEW

(SHOW A MINIMUM OF THREE REFERENCE TIES TO DURABLE PHYSICAL OBJECTS, RELEVANT MONUMENTS AND PHYSICAL CONDITIONS THAT WILL ENABLE RECOVERY OF THE CORNER.)



(BEARINGS ARE ASSUMED)

HES HELLAND ENGINEERING & SURVEYING, LTD.
 1107 Technology Parkway
 Cedar Falls, Iowa 50613-6951
 (319)-266-0161

SHINER = 4d. NAIL & 1 5/16"Ø METAL SHINER DRAWN BY: CDR
 BRASS TAG = 4d. NAIL & 13/16"Ø BRASS TAG
 OPC = PLASTIC CAP (O=ORANGE, R=RED, Y=YELLOW)
 (00') RECORDED AS FILE NAME: 18-191-24.DWG



I hereby certify that this land surveying document was prepared and the related survey work was performed by me or under my direct personal supervision and that I am a duly licensed Professional Land Surveyor under the laws of the State of Iowa.
Kyle J. Helland 8/13/2018
 Kyle J. Helland
 License Number 23212
 My license renewal date is December 31, 2019.
 All pages or sheets are covered by this seal except:

LIST CORNERS TO BE INDEXED			
CORNER	SECTION	TOWNSHIP	RANGE
N 1/4 CORNER	19	89N	11W
S 1/4 CORNER	18	89N	11W

File Number: 2019-00002972 Seq: 1