

Reserved for County Recorder's use.

Doc ID: 009362590001 Type: GEN  
Recorded: 08/21/2018 at 01:18:52 PM  
Fee Amt: \$7.00 Page 1 of 1  
Black Hawk County Iowa  
SANDIE L. SMITH RECORDER  
File **2019-00002968**

Kyle J. Helland, 1107 Technology Parkway, Cedar Falls, Iowa 50613-6951, (319)-266-0161

UNITED STATES PUBLIC LAND SURVEY CORNER CERTIFICATE  
OF

LAND SURVEY MONUMENTS SITUATED IN SECTION NO. 18, TOWNSHIP NO. 89 NORTH, RANGE  
NO. 11 WEST OF THE FIFTH PRINCIPAL MERIDIAN, BLACK HAWK COUNTY, IOWA.  
PREVIOUSLY RECORDED IN N/A

(SHOW REASON FOR PREPARING THIS CERTIFICATE, THE EVIDENCE AND DETAILED PROCEDURES USED IN ESTABLISHING THE  
CORNER POSITIONS AND MONUMENTATION FOUND OR PLACED.)

MONUMENT DESCRIPTION AND REMARKS:

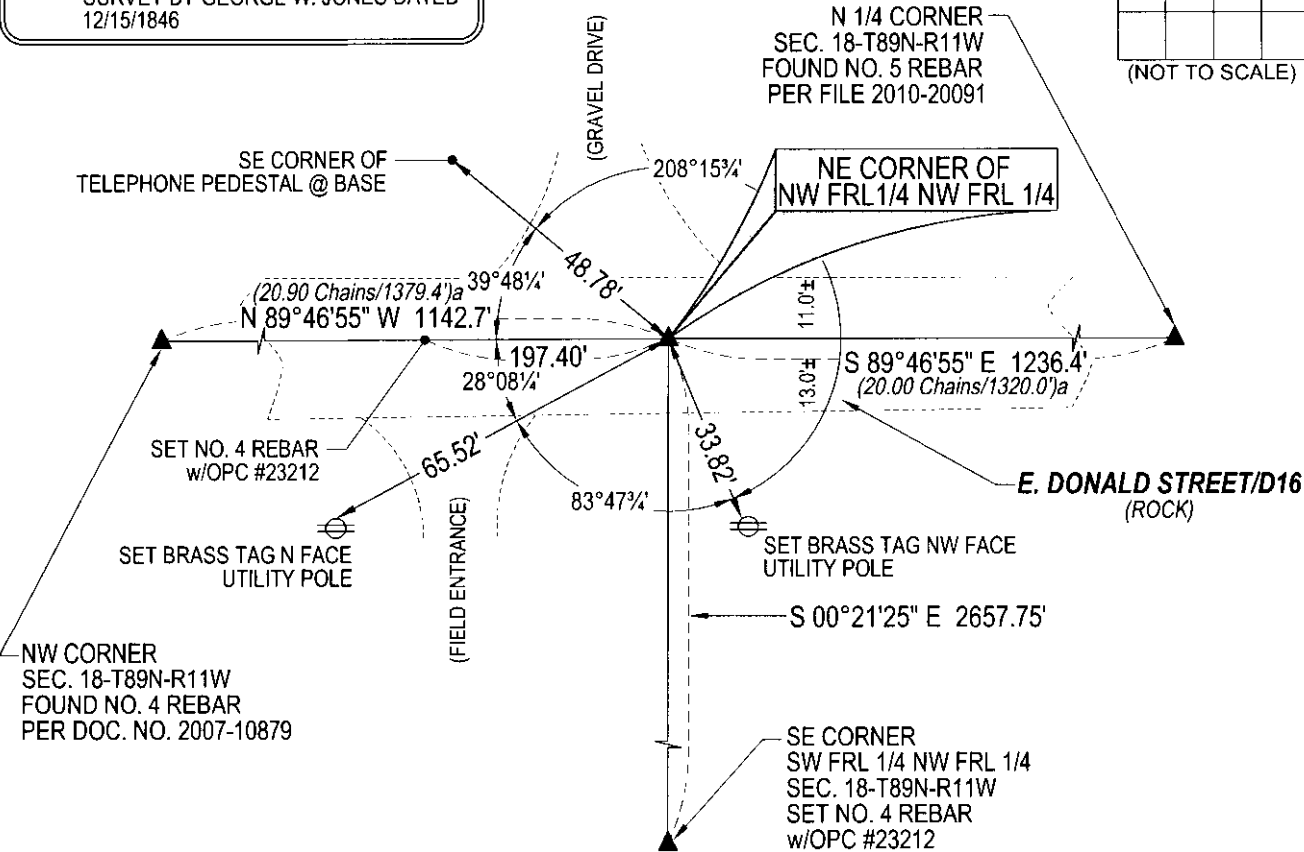
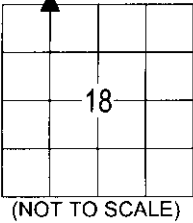
NO USPLSCC ON FILE. SURVEY COMPLETED IN THE NW FRL 1/4 OF SEC. 18-T89N-R11W.  
NE CORNER NW FRL 1/4 NW FRL 1/4: NO BLACK HAWK COUNTY ENGINEER REFERENCE TIES AVAILABLE. THE  
ORIGINAL GOVERNMENT NOTES ARE 320' IN ERROR FOR THE NORTH LINE OF THE NW FRL 1/4. PER THE BLM  
"MANUAL OF SURVEYING INSTRUCTIONS" SEC. 3-4 "CORNERS ESTABLISHED BUT NOT MARKED ON THE  
ORIGINAL SURVEYS (SIXTEENTH-SECTION CORNERS, SUBDIVISION-OF-SECTION CORNERS) WILL FOREVER  
REMAIN FIXED IN POSITION WHEN MARKED (1) USING PROPER SURVEY PROCEDURES, (2) **WITHOUT GROSS  
ERROR IN MEASUREMENT**, AND..." 320' WOULD CONSTITUTE A GROSS ERROR. DID NOT PRORATE THE  
ORIGINAL GOVERNMENT NOTES, INSTEAD, EXTENDED THE EAST LINE OF THE W FRL 1/2 OF THE SW FRL 1/4  
PER JOHN BALL SURVEY DATED 07/13/1866 NORTH TO THE NORTH LINE OF SAID NW FRL 1/4 AND SET NO. 4  
REBAR w/OPC #23212

PLAN VIEW

(SHOW A MINIMUM OF THREE REFERENCE TIES TO DURABLE PHYSICAL OBJECTS, RELEVANT MONUMENTS AND PHYSICAL  
CONDITIONS THAT WILL ENABLE RECOVERY OF THE CORNER.)

LEGEND

(0.0')a PER ORIGINAL GOVERNMENT NOTES  
SURVEY BY GEORGE W. JONES DATED  
12/15/1846



(BEARINGS ARE ASSUMED)

**HES** HELLAND ENGINEERING & SURVEYING, LTD.  
1107 Technology Parkway  
Cedar Falls, Iowa 50613-6951  
(319)-266-0161

SHINER = 4d. NAIL & 1 5/16"Ø METAL SHINER DRAWN BY: CDR  
BRASS TAG = 4d. NAIL & 13/16"Ø BRASS TAG  
OPC = PLASTIC CAP (O=ORANGE, R=RED, Y=YELLOW)  
(00') RECORDED AS FILE NAME: 18-191-61.DWG



I hereby certify that this land surveying document was prepared  
and the related survey work was performed by me or under my  
direct personal supervision and that I am a duly licensed  
Professional Land Surveyor under the laws of the State of Iowa.  
*Kyle J. Helland* 8/13/2018  
License Number 23212  
My license renewal date is December 31, 2019.  
All pages or sheets are covered by this seal except:

LIST CORNERS TO BE INDEXED			
CORNER	SECTION	TOWNSHIP	RANGE
NE COR. NW FRL 1/4 NW FRL 1/4	18	89N	11W
SE COR. SW 1/4 SW 1/4	7	89N	11W
SW COR. SE 1/4 SW 1/4	7	89N	11W
NW COR. NE 1/4 NW FRL 1/4	18	89N	11W

File Number: 2019-00002968 Seq: 1