

PAUL HELLAND

Paul H. Helland, 1107 Technology Parkway, Cedar Falls, Iowa 50613-6951, (319)-266-0161

UNITED STATES PUBLIC LAND SURVEY CORNER CERTIFICATE OF

LAND SURVEY MONUMENTS SITUATED IN SECTION NO. 18, TOWNSHIP NO. 89 NORTH, RANGE
NO. 11 WEST OF THE FIFTH PRINCIPAL MERIDIAN, BLACK HAWK COUNTY, IOWA.

PREVIOUSLY RECORDED IN _____

(SHOW REASON FOR PREPARING THIS CERTIFICATE, THE EVIDENCE AND DETAILED PROCEDURES USED IN ESTABLISHING THE
CORNER POSITIONS AND MONUMENTATION FOUND OR PLACED.)

MONUMENT DESCRIPTION AND REMARKS:

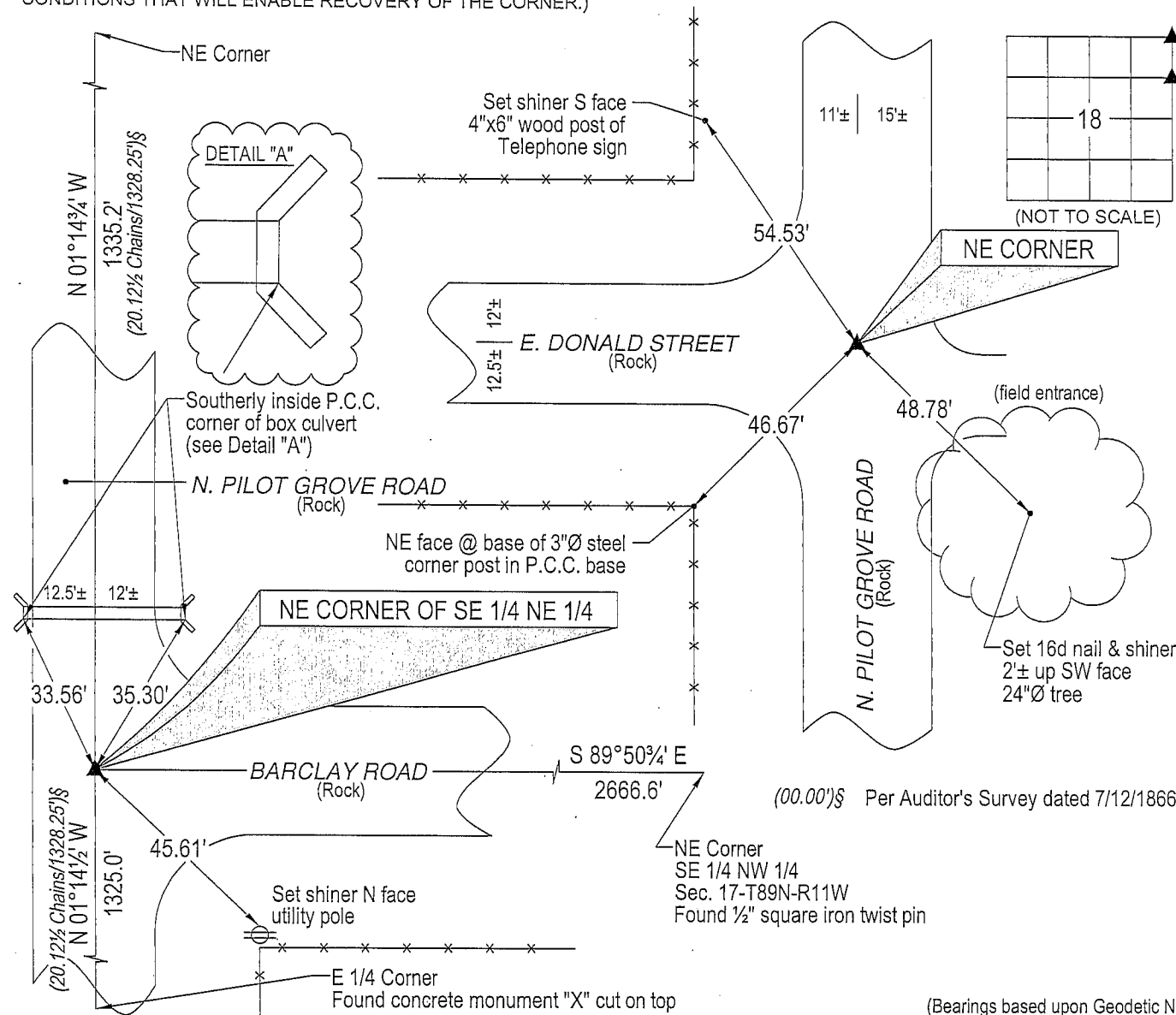
No corner certificates on file. Survey completed in the SE 1/4 NW 1/4 of Sec. 17-T89N-R11W.

→ NE CORNER: Black Hawk County Engineer reference ties dated 8/20/1944 call for "concrete monument w/brass cap."
Found concrete monument w/brass cap 1.4' deep. Set No. 4 rebar (1.0' long) w/orange plastic cap #6505 above.

→ NE CORNER SE 1/4 NE 1/4: No Black Hawk County Engineer reference ties exist. Surveyor's Record Book 1 (big book)
Page 118 in the Auditor's Office calls for "Iron Bar" at corner. Found 1/2" square iron twist pin 2.3' deep, set No. 4 rebar
w/orange plastic cap #6505 above, 0.2' deep.

PLAN VIEW

(SHOW A MINIMUM OF THREE REFERENCE TIES TO DURABLE PHYSICAL OBJECTS, RELEVANT MONUMENTS AND PHYSICAL
CONDITIONS THAT WILL ENABLE RECOVERY OF THE CORNER.)

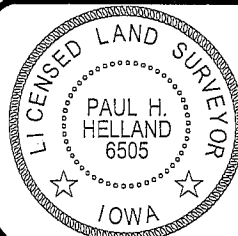


HELLAND ENGINEERING & SURVEYING, LTD.
1107 Technology Parkway
Cedar Falls, Iowa 50613-6951
(319)-266-0161

shiner = 8d nail & 1 15/16"Ø metal shiner

(00') Recorded As

File Name: 05-166c1.dwg



I hereby certify that this land surveying document was prepared
and the related survey work was performed by me or under my
direct personal supervision and that I am a duly licensed Land
Surveyor under the laws of the State of Iowa.

Paul H. Helland
License Number 6505
My license renewal date is December 31, 2005.
All pages or sheets are covered by this seal except:

LIST CORNERS TO BE INDEXED

CORNER	SECTION	TOWNSHIP	RANGE
NE CORNER	18	89N	11W
NE CORNER SE 1/4 NE 1/4	18	89N	11W

Rec