

SC
Misc
INDEX
MARGIN
PROOF
COMPARE

BLACK HAWK COUNTY IOWA:SS
Filed for record July 29, 1998 at 2235
4:00 P.M. and recorded in Book 330
of Misc Page 976
Recorder
Fee 1-5.00/
Prange Surveying
3304 Panther Ln
Cedar Falls IA 50613

PREPARED BY:

SLSI 9-94
CERT 12-98

UNITED STATES PUBLIC LAND SURVEY CORNER CERTIFICATE OF
Land Survey Monuments situated in Section 16, Township 89 N,
Range 11 W, of the Fifth Principal Meridian, Black Hawk County, Iowa.
Previously recorded in Book —, Page —, in County Recorder's Office.

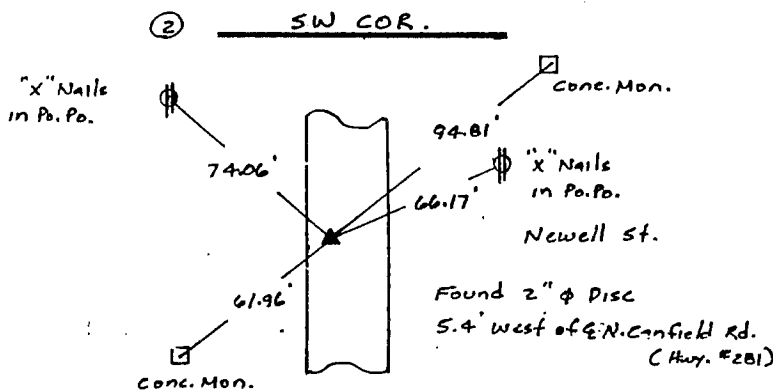
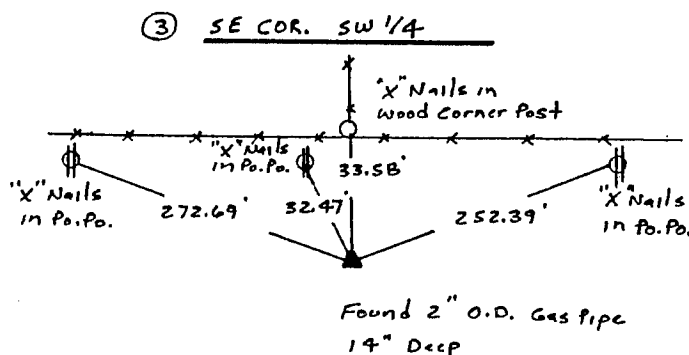
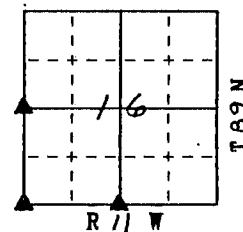
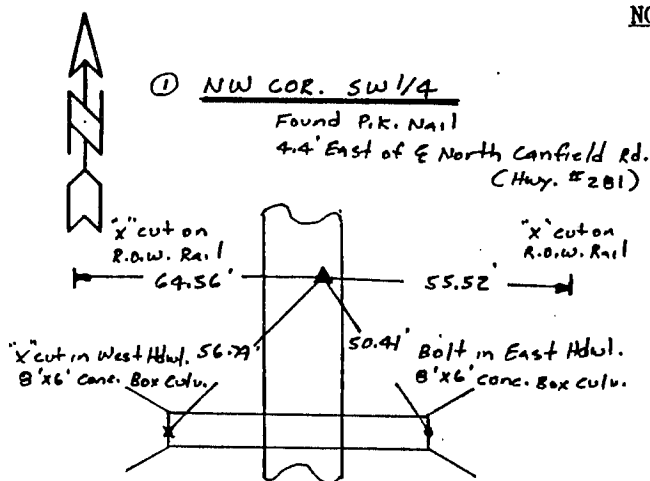
(Show reason for preparing this certificate, the evidence and detailed procedures used in establishing the corner positions and monumentation found or placed.)

Monument Description and Remarks: ① At the NW COR. of the SW 1/4 a P.K. Nail was found. County ties for this corner were gone. Found ties for this corner in As-Built Plans for Highway #281. All distances checked reasonably close. ② At the SW COR. a 2" ϕ Disc was found that As-Built Plans referred to as a "I.G.S. Marker." ③ At the S.E. COR. of the SW 1/4 a 2" ϕ Gas Pipe was found. Searched in the vicinity of the Gas Pipe for a concrete Monument but did not find.

PLAN - VIEW

(Show a minimum of three reference ties to durable physical objects, relevant monuments and physical conditions that will enable recovery of the corner.)

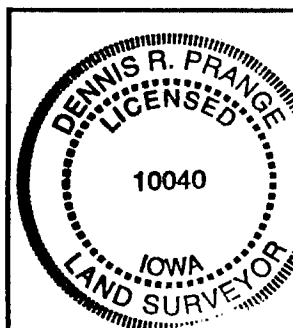
NOT TO SCALE



FIELD SURVEY: July 18, 1998

PREPARED BY: Dennis R. Prange

CERTIFICATION



I hereby certify that this land surveying document was prepared and the related survey work was performed by me or under my direct personal supervision and that I am a duly licensed Land Surveyor under the laws of the State of Iowa.

Dennis R. Prange July 29, 1998
Dennis R. Prange (date)

License Number 10040

My license renewal date is December 31, 1998

Pages or sheets covered by this seal:

This Land Corner Certificate Only.

LIST CORNERS TO BE INDEXED

Corner	Section	Township	Range
NW COR. SW 1/4	16	89	11
SW COR.	16	89	11
SE COR. SW 1/4	16	89	11