

SC
MISC
EXG
MARGIN
PROOF
COMPARE

BLACK HAWK COUNTY IOWA:SS 20288
FILED FOR RECORD APRIL 8, 1998 AT
4:00 P.M. AND RECORDED IN BOOK 329
OF MISC PAGE 644
RECORDER
FEE N/C
BLACK HAWK COUNTY ENGINEERS OFFICE

PREPARED BY: BLACK HAWK COUNTY ENGINEERS OFFICE
316 E. FIFTH STREET, ROOM 211 WATERLOO, IOWA 50703

PH.# (319) 291-2419 SLSI 9-94
FAX.# (319) 291-2461 CERT 12-98

UNITED STATES PUBLIC LAND SURVEY CORNER CERTIFICATE OF
Land Survey Monuments situated in Section 16, Township 89 N,
Range 11 W, of the Fifth Principal Meridian, BLACK HAWK County, Iowa.
Previously recorded in Misc. Book N/A, Page N/A, in County Recorder's Office.

(Show reason for preparing this certificate, the evidence and detailed procedures used in establishing the corner positions and monumentation found or placed.)

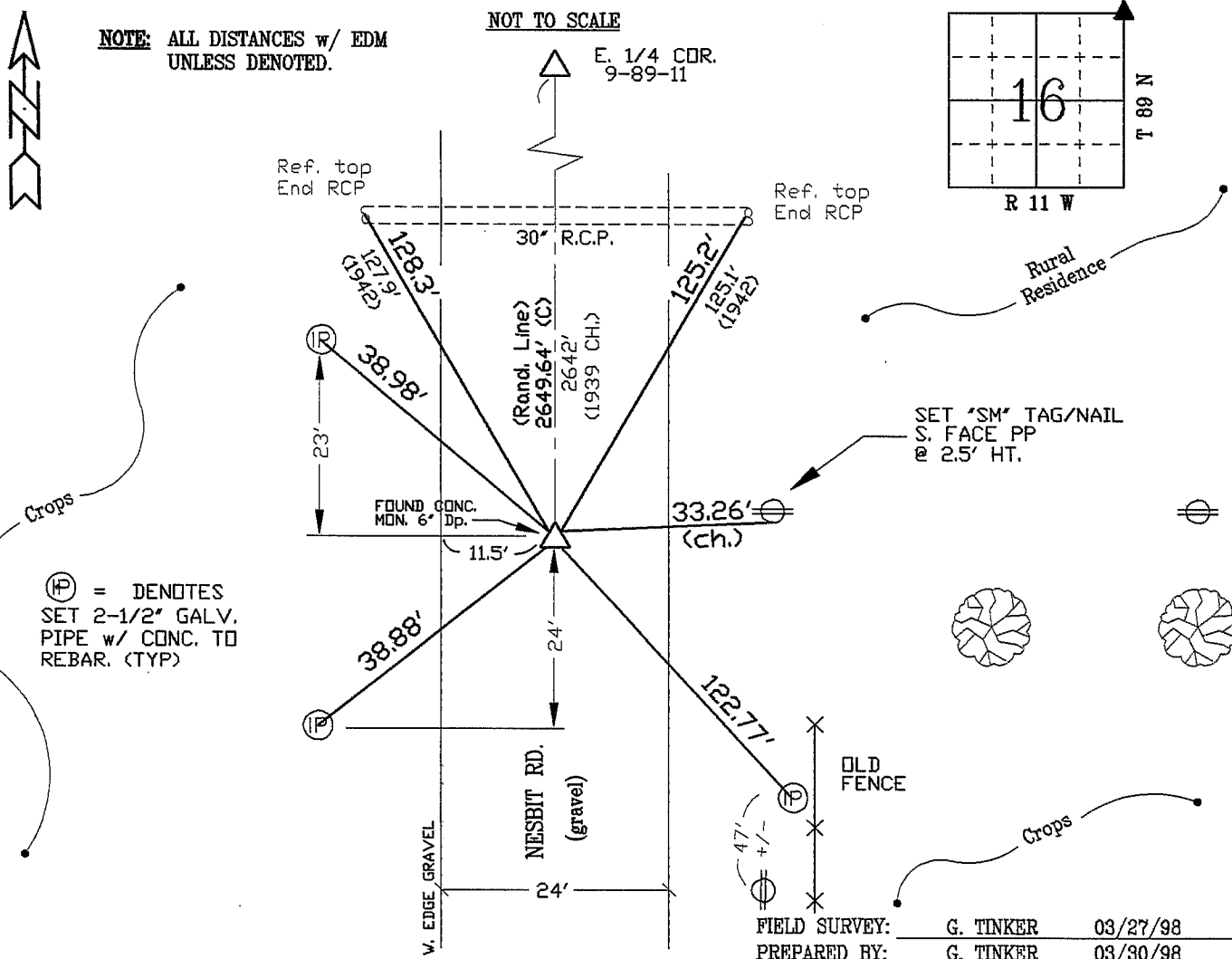
Monument Description and Remarks: FOUND CONC. MONUMENT STAMPED 9/10 16/15
LOC. 6" Dp. & BROKE @ 1' LENGTH W/ BASE "VERY STABLE". DUG 2.5' DP.
AND SET REBAR AROUND BASE AND POURED 1' DEEP CONC. TO TOP BASE.
FIT TOP ONTO BASE, ADDED CONC. AND 4" OF GRANULAR STONE AND TOPPED
OFF WITH CONC. AROUND MONUMENT. ONLY 30" RCP REF. TIES REMAIN 7/31/42
RECOVERED TO EST. SECT. LINE FOR R.O.W. PURCH. E. 1/4 COR. 9-89-11.

PLAN - VIEW

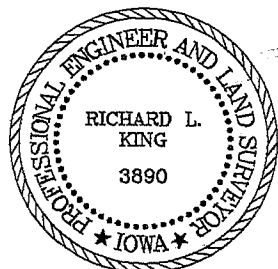
(Show a minimum of three reference ties to durable physical objects, relevant monuments and physical conditions that will enable recovery of the corner.)

NOTE: ALL DISTANCES w/ EDM
UNLESS DENOTED.

NOT TO SCALE



CERTIFICATION



I hereby certify that this land surveying document was prepared and the related survey work was performed by me or under my direct personal supervision and that I am a duly licensed Land Surveyor under the laws of the State of Iowa.

Richard L. King 4/7/98 (date)
License Number 3890

My license renewal date is December 31, 1999

Pages or sheets covered by this seal:

This Land Corner Certificate Only.

LIST CORNERS TO BE INDEXED

Corner	Section	Township	Range
N.E. COR.	16	89 N	11 W