

*Paul H. Helland, 1107 Technology Parkway, Cedar Falls, Iowa 50613-6951, (319)-266-0161

UNITED STATES PUBLIC LAND SURVEY CORNER CERTIFICATE OF

LAND SURVEY MONUMENTS SITUATED IN SECTION NO. 16, TOWNSHIP NO. 89 NORTH, RANGE NO. 11 WEST OF THE FIFTH PRINCIPAL MERIDIAN, BLACK HAWK COUNTY, IOWA.
PREVIOUSLY RECORDED IN N/A

(SHOW REASON FOR PREPARING THIS CERTIFICATE, THE EVIDENCE AND DETAILED PROCEDURES USED IN ESTABLISHING THE CORNER POSITIONS AND MONUMENTATION FOUND OR PLACED.)

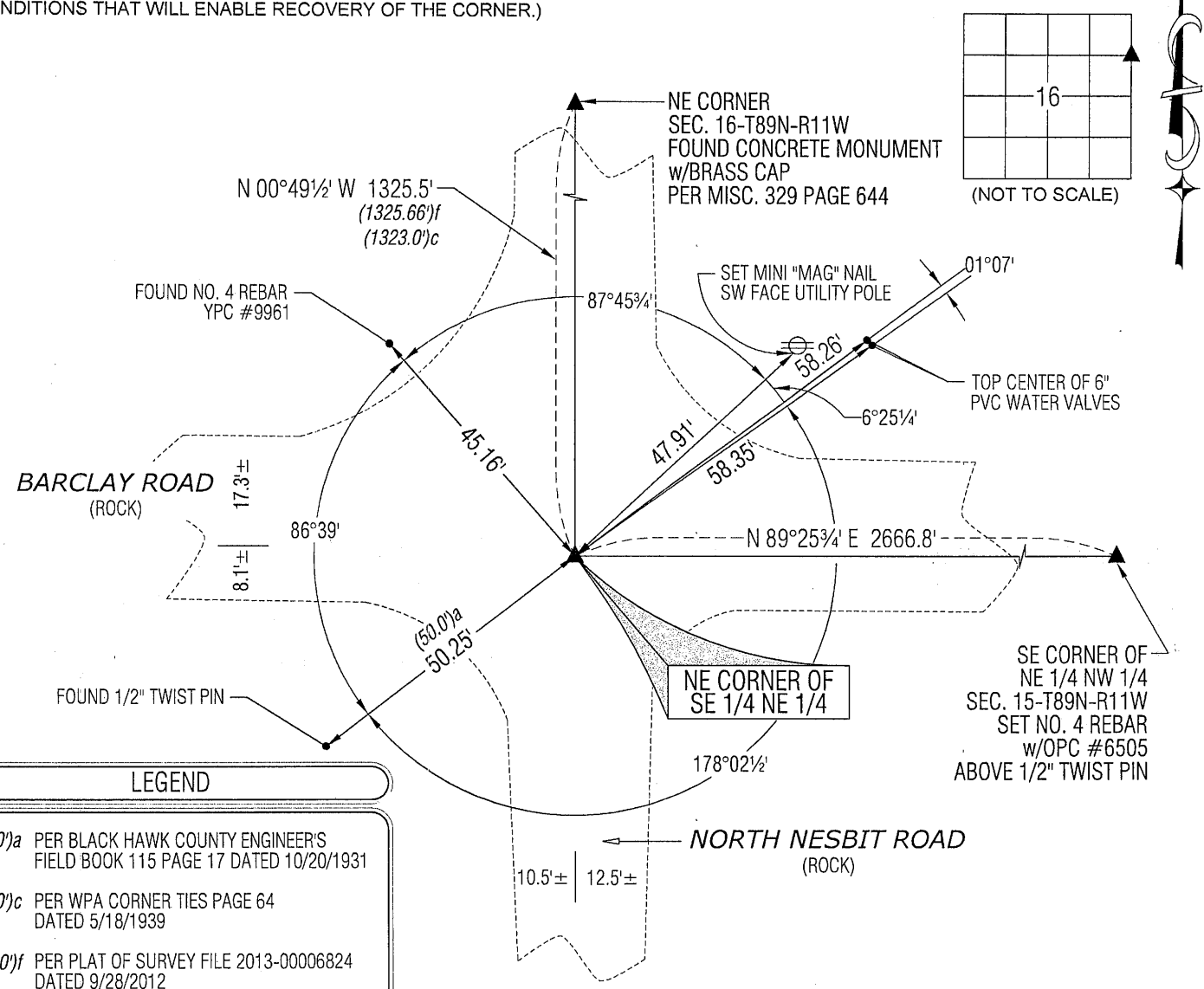
MONUMENT DESCRIPTION AND REMARKS:

NO USPLSCC ON FILE. SURVEY COMPLETED IN THE NW 1/4 OF SEC. 15-T89N-R11W.

→ **NE CORNER OF SE 1/4 NE 1/4:** BLACK HAWK COUNTY ENGINEER'S FIELD BOOK 115 PAGE 17 DATED 10/20/1931 CALLS FOR [BAR SET]. PLAT OF SURVEY FILE 2013-00006824 DATED 9/22/2012 CALLS FOR [SET NO. 5 REBAR w/ALUM ID. CAP "KESS & ASSOCIATES"]. DID NOT FIND SAID NO. 5 REBAR w/ALUM ID. CAP "KESS & ASSOCIATES" OF SAID SURVEY FOUND 1/2" TWIST PIN 2.2' DEEP (PINK GRANITE STONE EAST OF SAID PIN). SET NO. 4 REBAR w/OPC #6505 ABOVE SAID PIN.

PLAN VIEW

(SHOW A MINIMUM OF THREE REFERENCE TIES TO DURABLE PHYSICAL OBJECTS, RELEVANT MONUMENTS AND PHYSICAL CONDITIONS THAT WILL ENABLE RECOVERY OF THE CORNER.)



LEGEND

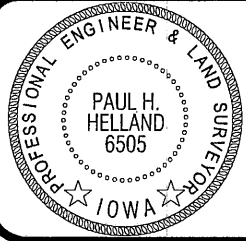
- (0.0)a PER BLACK HAWK COUNTY ENGINEER'S FIELD BOOK 115 PAGE 17 DATED 10/20/1931
- (0.0)c PER WPA CORNER TIES PAGE 64 DATED 5/18/1939
- (0.0)f PER PLAT OF SURVEY FILE 2013-00006824 DATED 9/28/2012

(BEARINGS ARE ASSUMED)



HELLAND ENGINEERING & SURVEYING, LTD.
1107 Technology Parkway
Cedar Falls, Iowa 50613-6951
(319)-266-0161

SHINER = 8d NAIL & 1 5/16"Ø METAL SHINER
BRASS TAG = 8d NAIL & 13/16"Ø BRASS TAG
OPC = PLASTIC CAP (O=ORANGE, R=RED, Y=YELLOW)
(00) RECORDED AS FILE NAME: 13-189-64.DWG



I hereby certify that this land surveying document was prepared and the related survey work was performed by me or under my direct personal supervision and that I am a duly licensed Professional Land Surveyor under the laws of the State of Iowa.
Paul H. Helland
Paul H. Helland
License Number 6505
My license renewal date is December 31, 2013.
All pages or sheets are covered by this seal except:

LIST CORNERS TO BE INDEXED			
CORNER	SECTION	TOWNSHIP	RANGE
NE COR. SE 1/4 NE 1/4	16	89N	11W
SE COR. NE 1/4 NE 1/4	16	89N	11W
SW COR. NW 1/4 NW 1/4	15	89N	11W
NW COR. SW 1/4 NW 1/4	15	89N	11W

(7.00) Rec