



Doc ID: 009751040001 Type: GEN
Recorded: 01/28/2020 at 12:25:09 PM
Fee Amt: \$7.00 Page 1 of 1
Black Hawk County Iowa
SANDIE L. SMITH RECORDER

File 2020-00013221

Reserved for County Recorder's use.

Kyle J. Helland, 6109 Chancellor Drive, Cedar Falls, Iowa 50613-6916, (319)-266-0161

UNITED STATES PUBLIC LAND SURVEY CORNER CERTIFICATE OF

LAND SURVEY MONUMENTS SITUATED IN SECTION NO. 15, TOWNSHIP NO. 89 NORTH, RANGE
NO. 11 WEST OF THE FIFTH PRINCIPAL MERIDIAN, BLACK HAWK COUNTY, IOWA.

PREVIOUSLY RECORDED IN N/A

(SHOW REASON FOR PREPARING THIS CERTIFICATE, THE EVIDENCE AND DETAILED PROCEDURES USED IN ESTABLISHING THE
CORNER POSITIONS AND MONUMENTATION FOUND OR PLACED.)

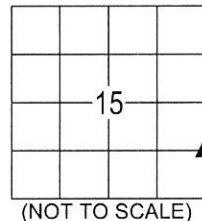
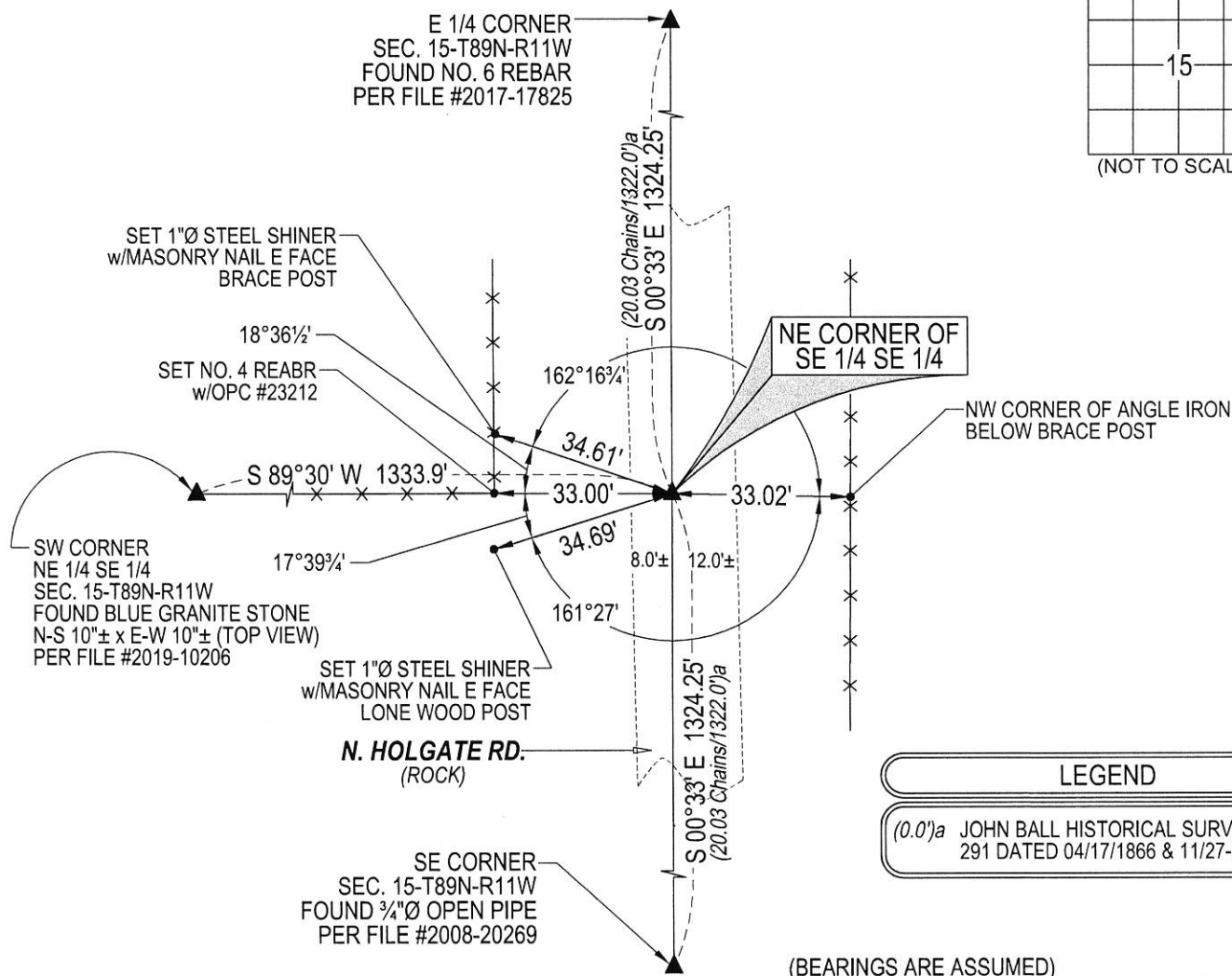
MONUMENT DESCRIPTION AND REMARKS:

NO USPLSCC ON FILE. SURVEY COMPLETED IN THE SE 1/4 OF SEC. 15-T89N-R11W.

→ **NE CORNER OF THE SE 1/4 SE 1/4:** JOHN BALL HISTORICAL SURVEY PG 291 DATED 04/17/1866 & 11/27-28/1891 CALLS
FOR [STONE]. WPA NOTES PAGE 67 DATED 05/18/1939 CALLS FOR [1/4 1/4 FC. R.W.]. WPA NOTES PAGE 7 DATED
03/07/1942 CALLS FOR [1/4 1/4 FC. R.W.]. SEARCHED AREA WITH MAGNETIC DETECTOR AND EXCAVATED 3'± HOLE x
2'± DEEP AND PROBED AN ADDITIONAL 2'± DEEP, NOTHING FOUND THEREFOR SET NO. 4 REBAR w/OPC #23212 AT
MIDPOINT AND ON LINE BETWEEN THE E 1/4 CORNER AND SE CORNER OF SAID SECTION FITS FENCE LINE RUNNING
WEST.

PLAN VIEW

(SHOW A MINIMUM OF THREE REFERENCE TIES TO DURABLE PHYSICAL OBJECTS, RELEVANT MONUMENTS AND PHYSICAL
CONDITIONS THAT WILL ENABLE RECOVERY OF THE CORNER.)



LEGEND

(0.0')a JOHN BALL HISTORICAL SURVEY PG
291 DATED 04/17/1866 & 11/27-28/1891

(BEARINGS ARE ASSUMED)



HELLAND ENGINEERING & SURVEYING, LTD.
6109 Chancellor Drive
Cedar Falls, Iowa 50613-6916
(319)-266-0161

SHINER = 4d. NAIL & 1 5/16"Ø METAL SHINER DRAWN BY: CDR
BRASS TAG = 4d. NAIL & 13/16"Ø BRASS TAG
OPC = PLASTIC CAP (O=ORANGE, R=RED, Y=YELLOW)
(00') RECORDED AS FILE NAME: 19-226-42.DWG



I hereby certify that this land surveying document was prepared
and the related survey work was performed by me or under my
direct personal supervision and that I am a duly licensed
Professional Land Surveyor under the laws of the State of Iowa.

Kyle J. Helland 01/28/2020
Kyle J. Helland
License Number 23212
My license renewal date is December 31, 2021.
All pages or sheets are covered by this seal except:

LIST CORNERS TO BE INDEXED

CORNER	SECTION	TOWNSHIP	RANGE
NE COR. SE 1/4 SE 1/4	15	89N	11W
SE COR. NE 1/4 SE 1/4	15	89N	11W
SW COR. NW 1/4 SW 1/4	14	89N	11W
NW COR. SW 1/4 SW 1/4	14	89N	11W