



Doc ID: 009751070001 Type: GEN
Recorded: 01/28/2020 at 12:25:47 PM
Fee Amt: \$7.00 Page 1 of 1
Black Hawk County Iowa
SANDIE L. SMITH RECORDER

File **2020-00013224**

Reserved for County Recorder's use.

Kyle J. Helland, 6109 Chancellor Drive, Cedar Falls, Iowa 50613-6916, (319)-266-0161

UNITED STATES PUBLIC LAND SURVEY CORNER CERTIFICATE OF

LAND SURVEY MONUMENTS SITUATED IN SECTION NO. 15, TOWNSHIP NO. 89 NORTH, RANGE
NO. 11 WEST OF THE FIFTH PRINCIPAL MERIDIAN, BLACK HAWK COUNTY, IOWA.
PREVIOUSLY RECORDED IN N/A

(SHOW REASON FOR PREPARING THIS CERTIFICATE, THE EVIDENCE AND DETAILED PROCEDURES USED IN ESTABLISHING THE
CORNER POSITIONS AND MONUMENTATION FOUND OR PLACED.)

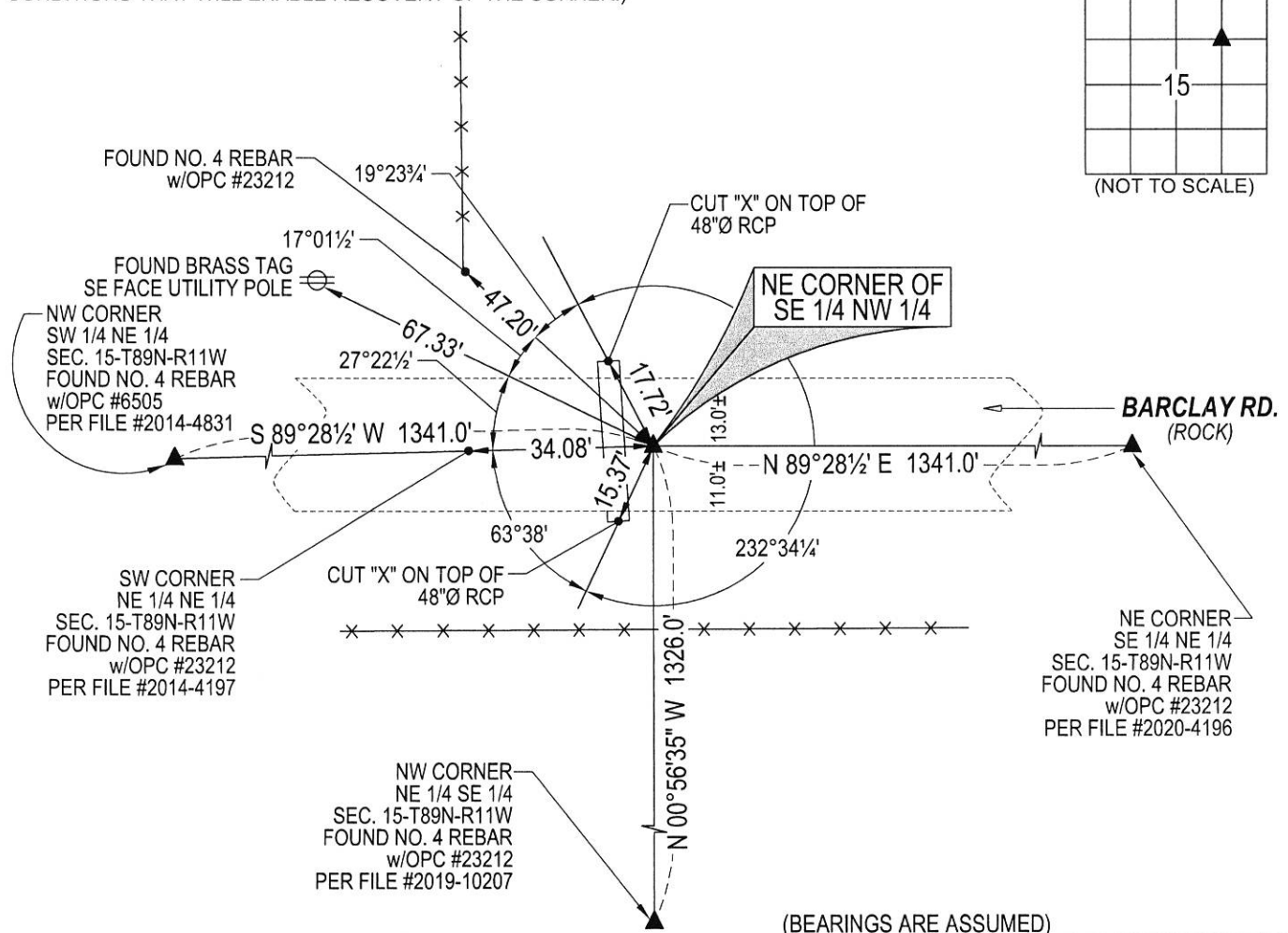
MONUMENT DESCRIPTION AND REMARKS:

NO USPLSCC ON FILE. SURVEY COMPLETED IN THE SW 1/4 NE 1/4 & SE 1/4 NE 1/4 OF SEC. 15-T89N-R11W.

→ **NE CORNER OF THE SW 1/4 NE 1/4:** NO BLACK HAWK COUNTY ENGINEER TIES ARE AVAILABLE NOR ANY OTHER PUBLIC DOCUMENTATION OF THE HISTORY AND PERPETUATION OF CORNER WAS AVAILABLE. SEARCHED AREA WITH MAGNETIC DETECTOR NOTHING FOUND. THE SW 1/4 OF THE NE 1/4 AND THE SE 1/4 OF THE NE 1/4 HAVE BEEN UNDER CONTIGUOUS OWNERSHIP AND EXAMINATION OF HISTORICAL AERIAL PHOTOS DATING BACK TO THE 1930'S, DOES NOT SHOW ANY EVIDENCE OF THE NORTH-SOUTH 1/4 1/4 LINE BEING MONUMENTED, THEREFOR SET NO. 4 REBAR w/OPC #23212 AT MIDPOINT AND ON LINE BETWEEN THE NE CORNER OF THE SE 1/4 NE 1/4 & THE NW CORNER OF THE SW 1/4 NE 1/4. THE CORNER WAS SET AT MIDPOINT ALONG THE NORTH LINE OF THE SOUTH 1/2 OF THE NE 1/4 WHICH DIFFERS FROM THE SE CORNER OF THE NW 1/4 NE 1/4 (A.K.A. SW CORNER NE 1/4 NE 1/4), WHICH WAS ESTABLISHED BY FIELD EVIDENCE.

PLAN VIEW

(SHOW A MINIMUM OF THREE REFERENCE TIES TO DURABLE PHYSICAL OBJECTS, RELEVANT MONUMENTS AND PHYSICAL CONDITIONS THAT WILL ENABLE RECOVERY OF THE CORNER.)



HELLAND ENGINEERING & SURVEYING, LTD.
6109 Chancellor Drive
Cedar Falls, Iowa 50613-6916
(319)-266-0161

SHINER = 4d. NAIL & 1 5/16"Ø METAL SHINER
BRASS TAG = 4d. NAIL & 13/16"Ø BRASS TAG
OPC = PLASTIC CAP (O=ORANGE, R=RED, Y=YELLOW)
(00') RECORDED AS
DRAWN BY: CDR
FILE NAME: 19-226-35.DWG



I hereby certify that this land surveying document was prepared
and the related survey work was performed by me or under my
direct personal supervision and that I am a duly licensed
Professional Land Surveyor under the laws of the State of Iowa.

Kyle J. Helland
Kyle J. Helland
License Number 23212
My license renewal date is December 31, 2021.
All pages or sheets are covered by this seal except:

LIST CORNERS TO BE INDEXED

CORNER	SECTION	TOWNSHIP	RANGE
NE COR. SW 1/4 NE 1/4	15	89N	11W
NW COR. SE 1/4 NE 1/4	15	89N	11W