



Doc ID: 009647390002 Type: GEN
Recorded: 09/05/2019 at 10:11:42 AM
Fee Amt: \$12.00 Page 1 of 2
Black Hawk County Iowa
SANDIE L. SMITH RECORDER

File 2020-00004194

Reserved for County Recorder's use.

* Kyle J. Helland, 6109 Chancellor Drive, Cedar Falls, Iowa 50613-6916, (319)-266-0161

UNITED STATES PUBLIC LAND SURVEY CORNER CERTIFICATE
OF

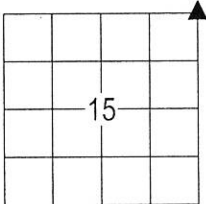
LAND SURVEY MONUMENTS SITUATED IN SECTION NO. 15, TOWNSHIP NO. 89 NORTH, RANGE
NO. 11 WEST OF THE FIFTH PRINCIPAL MERIDIAN, BLACK HAWK COUNTY, IOWA.
PREVIOUSLY RECORDED IN N/A

(SHOW REASON FOR PREPARING THIS CERTIFICATE, THE EVIDENCE AND DETAILED PROCEDURES USED IN ESTABLISHING THE
CORNER POSITIONS AND MONUMENTATION FOUND OR PLACED.)

MONUMENT DESCRIPTION AND REMARKS:

NO USPLSCC ON FILE. SURVEY COMPLETED IN THE NE 1/4 OF SEC. 15-T89N-R11W & SE 1/4 SEC. 10-T89N-R11W.

→ **NE CORNER:** JOHN BALL HISTORICAL SURVEY PAGE 583 DATED 10/04/1886 CALLS FOR [STONE]. JOHN BALL
HISTORICAL SURVEY PAGE 291 DATED 04/17/1866 & 11/27-28/1891 CALLS FOR [STONE]. WPA NOTES PG 40 DATED
05/02/1939 CALLS FOR [FOUND 3 N****HEAD 11" x 8" x 6", 9" x 5" x 5", ALL STONES STANDING ON END. LOWERED
EVIDENCE AND SET C.M. ON TOP 12" DEEP.]. HOWEVER, THE SAID WPA NOTES PG 40 HAS A LARGE "X" DRAWN THRU
THE ENTIRE DESCRIPTION OF CORNER. MOREOVER, ON THE BOTTOM OF THE NEXT PAGE, IT NOTES IN DIFFERENT
HANDWRITING: "MOVE 16.3' TO 18.5' WEST ON SEC. FE LINE", ALSO IN REVIEW OF ALL THE WPA RANDOM LINE NOTES
THE DISTANCE FROM THE RANDOM LINES, HAVE BEEN WRITTEN OVER. IT APPEARS THE CORNER WAS FOUND, SET
WITH A CM, THEN CHANGED FOR UNKNOWN REASONS. SEARCHED AREA WITH MAGNETIC DETECTOR AND PROBED
FOUND A CLUSTER OF THREE STONES AND AN ANGLE IRON 1.5' DEEP AT APPROXIMATE WPA DISTANCES FROM 1/4 1/4
STONE WEST (1370.3') AND FROM THE EAST 1/4 CORNER (2656.1'), BUT BASED ON SAID NOTES THAT THE CORNER WAS
MOVED WEST AS STATED, SEARCHED APPROXIMATELY 16'± WEST OF SAID FOUND STONES AND FOUND A YELLOW
GRANITE STONE 2.0' DEEP BELIEVED TO BE THE STONE SET BY JOHN BALL. SET 1/2" REBAR w/OPC LICENSE #23212
ABOVE SAID STONE.



(NOT TO SCALE)

(BEARINGS ARE ASSUMED)

SHEET 1 OF 2



HELLAND ENGINEERING & SURVEYING, LTD.
6109 Chancellor Drive
Cedar Falls, Iowa 50613-6916
(319)-266-0161

SHINER = 4d. NAIL & 1 5/16"Ø METAL SHINER DRAWN BY: CDR
BRASS TAG = 4d. NAIL & 13/16"Ø BRASS TAG
OPC = PLASTIC CAP (O=ORANGE, R=RED, Y=YELLOW)
(00') RECORDED AS FILE NAME: 19-161-1521.DWG



I hereby certify that this land surveying document was prepared
and the related survey work was performed by me or under my
direct personal supervision and that I am a duly licensed
Professional Land Surveyor under the laws of the State of Iowa.
Kyle J. Helland 09/12/2019
Kyle J. Helland
License Number 23212
My license renewal date is December 31, 2019.
All pages or sheets are covered by this seal except:

| LIST CORNERS TO BE INDEXED | | | |
|----------------------------|---------|----------|-------|
| CORNER | SECTION | TOWNSHIP | RANGE |
| NE CORNER | 15 | 89N | 11W |
| SE CORNER | 10 | 89N | 11W |
| SW CORNER | 11 | 89N | 11W |
| NW CORNER | 14 | 89N | 11W |

UNITED STATES PUBLIC LAND SURVEY CORNER CERTIFICATE
OF

LAND SURVEY MONUMENTS SITUATED IN SECTION NO. 15, TOWNSHIP NO. 89 NORTH, RANGE NO. 11 WEST OF THE FIFTH PRINCIPAL MERIDIAN, BLACK HAWK COUNTY, IOWA.
PREVIOUSLY RECORDED IN N/A

(SHOW REASON FOR PREPARING THIS CERTIFICATE, THE EVIDENCE AND DETAILED PROCEDURES USED IN ESTABLISHING THE CORNER POSITIONS AND MONUMENTATION FOUND OR PLACED.)

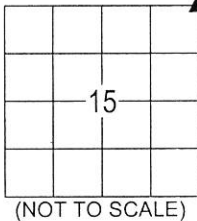
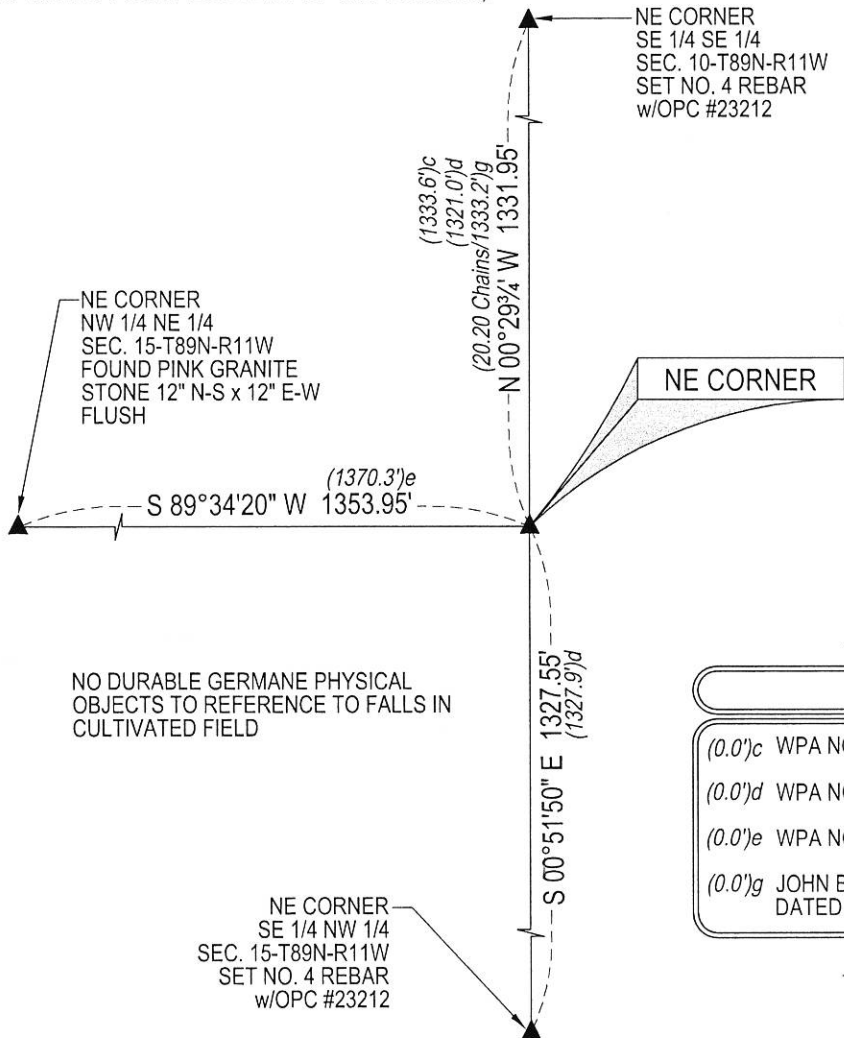
MONUMENT DESCRIPTION AND REMARKS:

NO USPLSCC ON FILE. SURVEY COMPLETED IN THE NE 1/4 OF SEC. 15-T89N-R11W & SE 1/4 SEC. 10-T89N-R11W.

NE CORNER: SEE SHEET 1 FOR NOTES.

PLAN VIEW

(SHOW A MINIMUM OF THREE REFERENCE TIES TO DURABLE PHYSICAL OBJECTS, RELEVANT MONUMENTS AND PHYSICAL CONDITIONS THAT WILL ENABLE RECOVERY OF THE CORNER.)



LEGEND

- (0.0')c WPA NOTES PG 65 DATED 05/18/1939
- (0.0')d WPA NOTES PGS 7-8 DATED 03/07/1942
- (0.0')e WPA NOTES PG 10 NO DATE
- (0.0')g JOHN BALL HISTORICAL SURVEY PG 583 DATED 10/04/1886

(BEARINGS ARE ASSUMED)

SHEET 2 OF 2



HELLAND ENGINEERING & SURVEYING, LTD.
6109 Chancellor Drive
Cedar Falls, Iowa 50613-6916
(319)-266-0161

SHINER = 4d. NAIL & 1 5/16"Ø METAL SHINER DRAWN BY: CDR
BRASS TAG = 4d. NAIL & 13/16"Ø BRASS TAG
OPC = PLASTIC CAP (O=ORANGE, R=RED, Y=YELLOW)
(00') RECORDED AS FILE NAME: 19-161-1521.DWG



I hereby certify that this land surveying document was prepared and the related survey work was performed by me or under my direct personal supervision and that I am a duly licensed Professional Land Surveyor under the laws of the State of Iowa.

Kyle J. Helland
License Number 23212
My license renewal date is December 31, 2019.
All pages or sheets are covered by this seal except:

LIST CORNERS TO BE INDEXED

| CORNER | SECTION | TOWNSHIP | RANGE |
|-----------|---------|----------|-------|
| NE CORNER | 15 | 89N | 11W |
| SE CORNER | 10 | 89N | 11W |
| SW CORNER | 11 | 89N | 11W |
| NW CORNER | 14 | 89N | 11W |