



Doc ID: 009647410001 Type: GEN
Recorded: 09/05/2019 at 10:12:04 AM
Fee Amt: \$7.00 Page 1 of 1
Black Hawk County Iowa
SANDIE L. SMITH RECORDER

File **2020-00004196**

Reserved for County Recorder's use.

Kyle J. Helland, 6109 Chancellor Drive, Cedar Falls, Iowa 50613-6916, (319)-266-0161

UNITED STATES PUBLIC LAND SURVEY CORNER CERTIFICATE
OF

LAND SURVEY MONUMENTS SITUATED IN SECTION NO. 15, TOWNSHIP NO. 89 NORTH, RANGE
NO. 11 WEST OF THE FIFTH PRINCIPAL MERIDIAN, BLACK HAWK COUNTY, IOWA.
PREVIOUSLY RECORDED IN N/A.

(SHOW REASON FOR PREPARING THIS CERTIFICATE, THE EVIDENCE AND DETAILED PROCEDURES USED IN ESTABLISHING THE
CORNER POSITIONS AND MONUMENTATION FOUND OR PLACED.)

MONUMENT DESCRIPTION AND REMARKS:
NO USPLSCC ON FILE. SURVEY COMPLETED IN THE NE 1/4 OF SEC. 15-T89N-R11W & SE 1/4 SEC. 10-T89N-R11W.

→ **NE CORNER OF THE SE 1/4 NE 1/4:** BLACK HAWK COUNTY ENGINEERS FIELD BOOK 115 PAGE 16,17 DATED 10/20/1931
CALLS FOR [DUG FOUND NOTHING I.B. SET] USING THE EAST 1/4 CORNER OF SECTION 15-T89N-R11W BUT DOES NOT
STATE WHAT WAS USED FOR NORTH... JOHN BALL HISTORICAL SURVEY PAGE 291 DATED 04/17/1886 CALLS FOR
[STAKE]. WPA NOTES PG 7 DATED 03/07/1942 CALLS FOR [E. OF ROAD R. E. + W]. WPA NOTES PG 8 DATED 03/07/1942
CALLS FOR [1/4 1/4 FC R.W. FC R.E.]. SEARCHED AREA FOUND 1/2" IRON SQUARE PIN, REMOVED SQUARE PIN AND
BEGAN EXCAVATED A HOLE 2' x 4' A DEPTH OF 3' AND PROBED IN ALL DIRECTIONS NOTHING FOUND, THEREFORE SET
NO. 4 REBAR w/OPC #23212 ON LINE BETWEEN THE E 1/4 CORNER OF SEC. 15-T89N-R11W AND THE NE CORNER OF
SEC. 15-T89N-R11W AND AT SPLIT.

PLAN VIEW

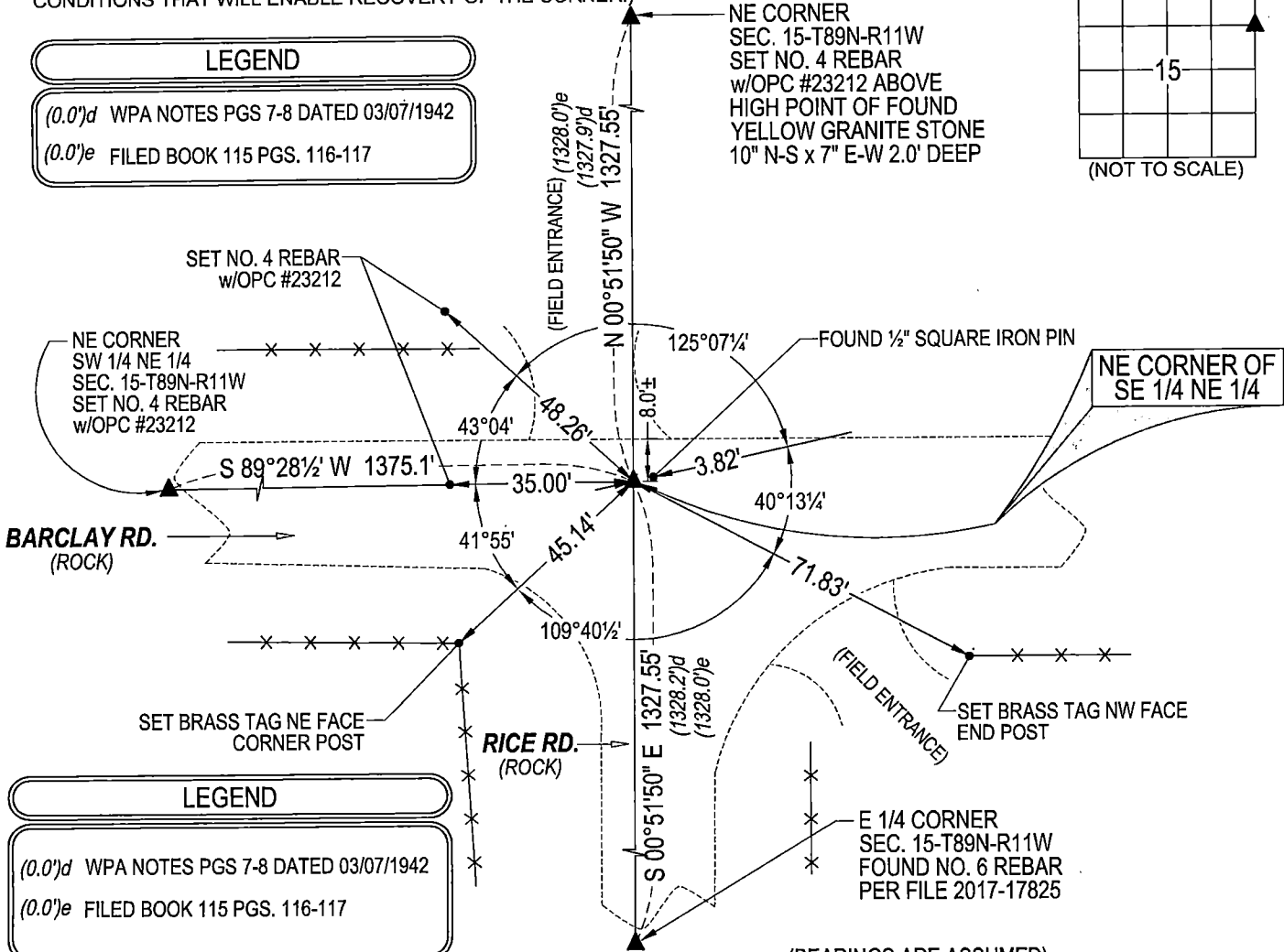
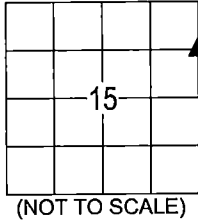
(SHOW A MINIMUM OF THREE REFERENCE TIES TO DURABLE PHYSICAL OBJECTS, RELEVANT MONUMENTS AND PHYSICAL
CONDITIONS THAT WILL ENABLE RECOVERY OF THE CORNER.)

LEGEND

(0.0')d WPA NOTES PGS 7-8 DATED 03/07/1942

(0.0')e FILED BOOK 115 PGS. 116-117

NE CORNER
SEC. 15-T89N-R11W
SET NO. 4 REBAR
w/OPC #23212 ABOVE
HIGH POINT OF FOUND
YELLOW GRANITE STONE
10" N-S x 7" E-W 2.0' DEEP



(BEARINGS ARE ASSUMED)

LEGEND

(0.0')d WPA NOTES PGS 7-8 DATED 03/07/1942

(0.0')e FILED BOOK 115 PGS. 116-117

HELLAND ENGINEERING & SURVEYING, LTD.
6109 Chancellor Drive
Cedar Falls, Iowa 50613-6916
(319)-266-0161

SHINER = 4d. NAIL & 1 5/16"Ø METAL SHINER DRAWN BY: CDR
BRASS TAG = 4d. NAIL & 13/16"Ø BRASS TAG
OPC = PLASTIC CAP (O=ORANGE, R=RED, Y=YELLOW)
(00') RECORDED AS FILE NAME: 19-161-1532.DWG



I hereby certify that this land surveying document was prepared
and the related survey work was performed by me or under my
direct personal supervision and that I am a duly licensed
Professional Land Surveyor under the laws of the State of Iowa.
Kyle J. Helland 09/12/2019
Kyle J. Helland
License Number 23212
My license renewal date is December 31, 2019.
All pages or sheets are covered by this seal except:

LIST CORNERS TO BE INDEXED				
CORNER	SECTION	TOWNSHIP	RANGE	
NE COR. SE 1/4 NE 1/4	15	89N	11W	
SE COR. NE 1/4 NE 1/4	15	89N	11W	
SW COR. NW 1/4 NW 1/4	14	89N	11W	
NW COR. SW 1/4 NW 1/4	14	89N	11W	