



Doc ID: 007599090001 Type: GEN
 Recorded: 04/12/2017 at 02:05:00 PM
 Fee Amt: \$7.00 Page 1 of 1
 Black Hawk County Iowa
 SANDIE L. SMITH RECORDER

File **2017-00017825**

Reserved for County Recorder's use.

Kyle J. Helland, 1107 Technology Parkway, Cedar Falls, Iowa 50613-6951, (319)-266-0161

UNITED STATES PUBLIC LAND SURVEY CORNER CERTIFICATE OF

LAND SURVEY MONUMENTS SITUATED IN SECTION NO. 15, TOWNSHIP NO. 89 NORTH, RANGE NO. 11 WEST OF THE FIFTH PRINCIPAL MERIDIAN, BLACK HAWK COUNTY, IOWA.
 PREVIOUSLY RECORDED IN N/A.

(SHOW REASON FOR PREPARING THIS CERTIFICATE, THE EVIDENCE AND DETAILED PROCEDURES USED IN ESTABLISHING THE CORNER POSITIONS AND MONUMENTATION FOUND OR PLACED.)

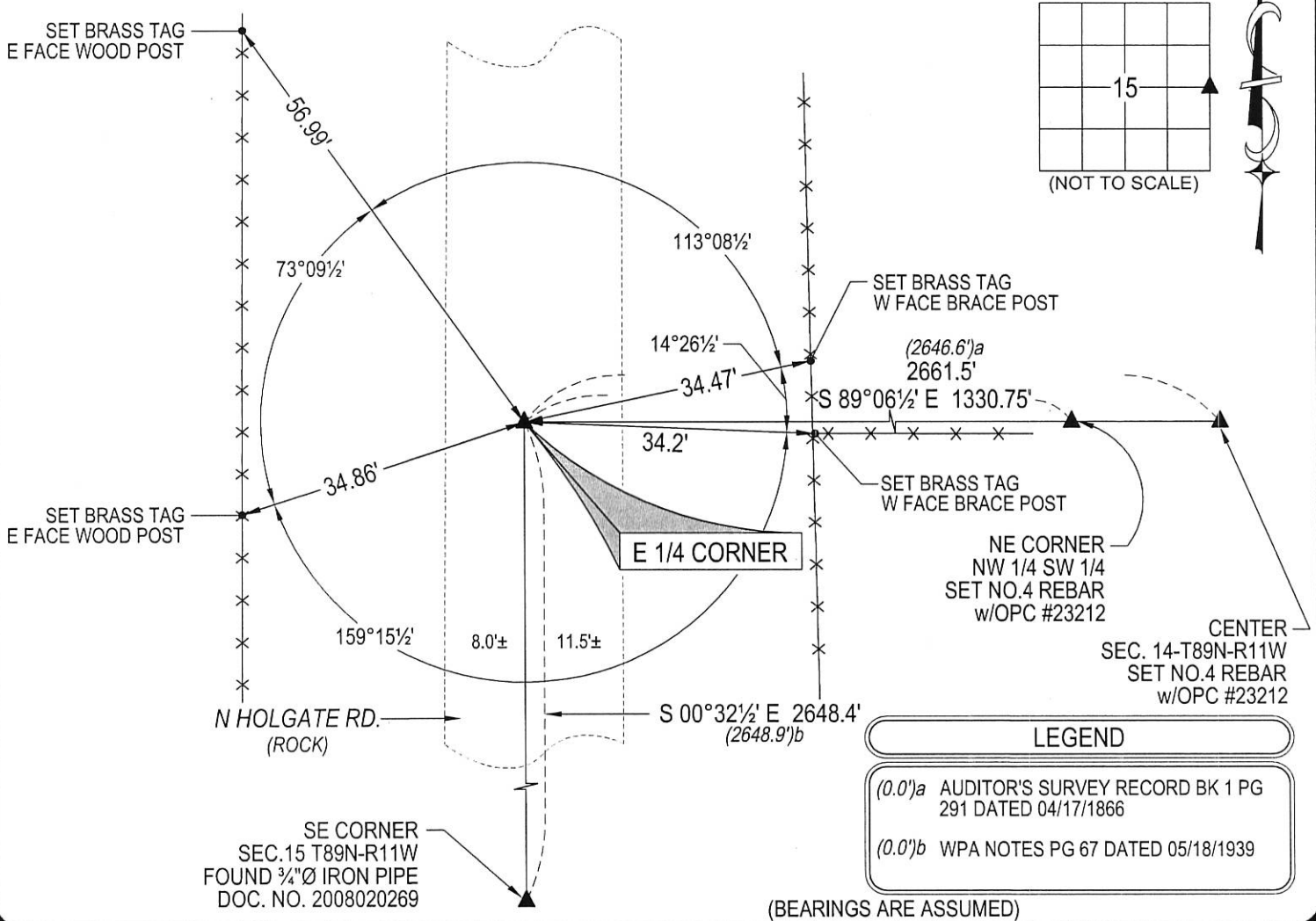
MONUMENT DESCRIPTION AND REMARKS:

NO USPLSCC ON FILE. SURVEY COMPLETED IN THE SW 1/4 OF SEC. 14-T89N-R11W.

→ **E 1/4 CORNER:** AUDITOR'S SURVEY RECORD BOOK 1 PAGE 291 DATED 04/17/1866 CALLS FOR [STONE]. WPA NOTES DATED 05/18/1939 CALLS FOR [FOUND IRON BAR 1"x13 1/2" LONG. SET C.M. 12" UNDERGROUND]. SEARCHED AREA, FOUND NO. 6 REBAR 1.4' LONG 1.5' DEEP. PULLED SAID REBAR AND PROBED IN HOLE, HIT STANDARD CONCRETE MONUMENT 1.5' DEEP (3.0' BELOW ROAD SURFACE). SET SAID REBAR BACK IN HOLE TO A DEPTH OF 0.3' BELOW ROAD SURFACE ABOVE SAID CONCRETE MONUMENT.

PLAN VIEW

(SHOW A MINIMUM OF THREE REFERENCE TIES TO DURABLE PHYSICAL OBJECTS, RELEVANT MONUMENTS AND PHYSICAL CONDITIONS THAT WILL ENABLE RECOVERY OF THE CORNER.)



HELLAND ENGINEERING & SURVEYING, LTD.
 1107 Technology Parkway
 Cedar Falls, Iowa 50613-6951
 (319)-266-0161

SHINER = 8d. NAIL & 1 5/16" Ø METAL SHINER DRAWN BY: SMN
 BRASS TAG = 8d. NAIL & 13/16" Ø BRASS TAG
 OPC = PLASTIC CAP (O=ORANGE, R=RED, Y=YELLOW)
 (00') RECORDED AS FILE NAME: 17-120-26.DWG



I hereby certify that this land surveying document was prepared and the related survey work was performed by me or under my direct personal supervision and that I am a duly licensed Professional Land Surveyor under the laws of the State of Iowa.
Kyle J. Helland 4/3/17
 Kyle J. Helland
 License Number 23212
 My license renewal date is December 31, 2017.
 All pages or sheets are covered by this seal except:

LIST CORNERS TO BE INDEXED			
CORNER	SECTION	TOWNSHIP	RANGE
E 1/4 CORNER	15	89N	11W
W 1/4 CORNER	14	89N	11W