

Reserved for County Recorder's use.



Doc ID: 012064200001 Type: GEN
Recorded: 01/24/2024 at 08:57:25 AM
Fee Amt: \$7.00 Page 1 of 1
Black Hawk County Iowa
SANDIE L. SMITH RECORDER

File 2024-00009265

Jeffrey P. Helland, 6109 Chancellor Drive, Cedar Falls, Iowa 50613-6916, (319)-266-0161

UNITED STATES PUBLIC LAND SURVEY CORNER CERTIFICATE
OF

LAND SURVEY MONUMENTS SITUATED IN SECTION NO. 15, TOWNSHIP NO. 89 NORTH, RANGE
NO. 11 WEST OF THE FIFTH PRINCIPAL MERIDIAN, BLACK HAWK COUNTY, IOWA.

PREVIOUSLY RECORDED IN #2019-00010207.

(SHOW REASON FOR PREPARING THIS CERTIFICATE, THE EVIDENCE AND DETAILED PROCEDURES USED IN ESTABLISHING THE
CORNER POSITIONS AND MONUMENTATION FOUND OR PLACED.)

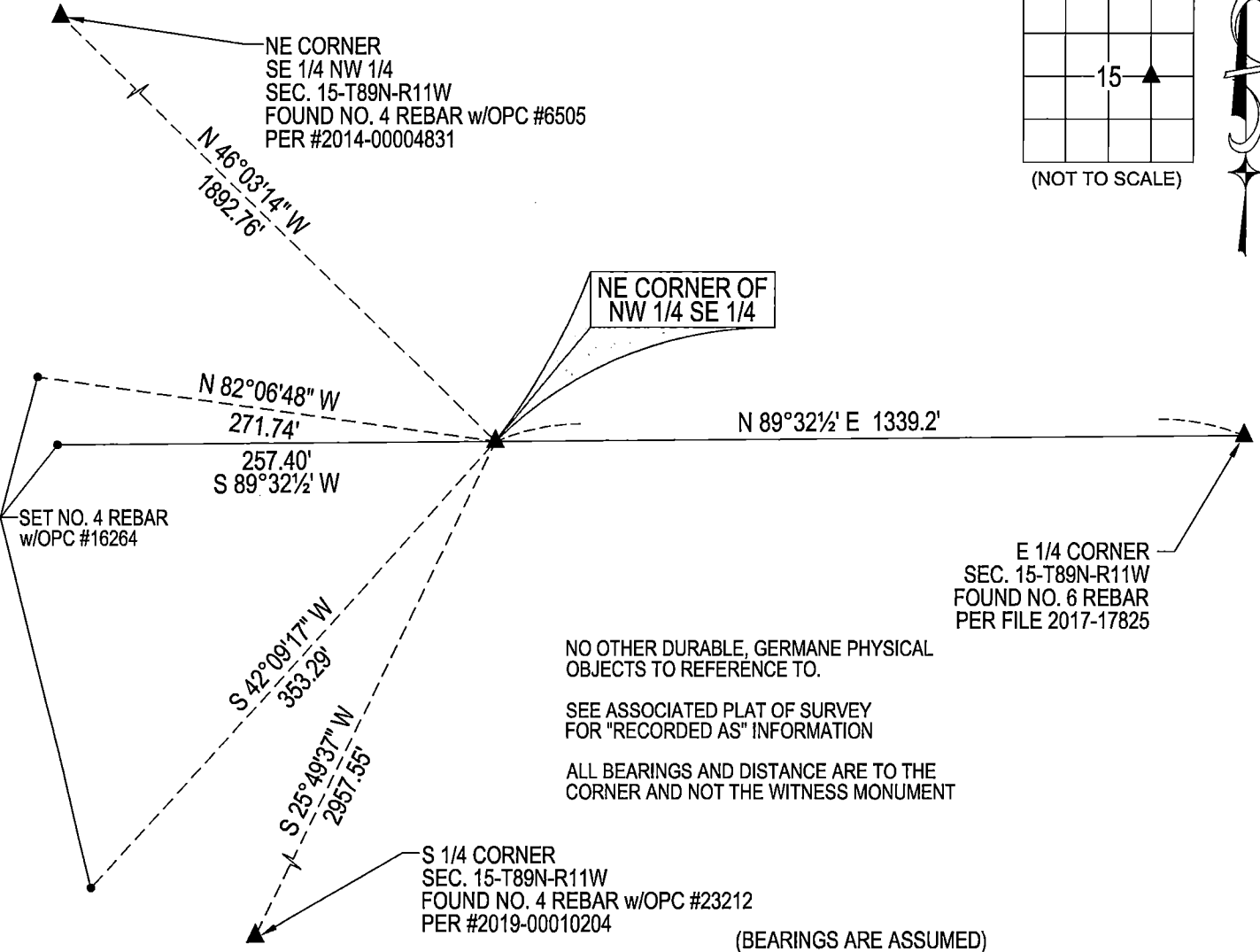
MONUMENT DESCRIPTION AND REMARKS:

MONUMENTATION HAS CHANGED. SURVEY COMPLETED IN THE NE 1/4 AND THE SE 1/4 OF SEC. 15-T89N-R11W.

NE CORNER OF THE NW 1/4 SE 1/4: USPLSCC RECORDED IN #2019-00010207 DATED 12/31/2018 CALLS FOR [JOHN BALL
HISTORICAL SURVEY PG 291 DATED 04/17/1866 & 11/27-28/1891 CALLS FOR [STAKE]. SEARCHED AREA WITH METAL
DETECTOR AND PROBED 5"Ø NOTHING FOUND, THEREFORE SET NO. 4 REBAR w/OPC #23212 AT MIDPOINT AND ON LINE
BETWEEN THE EAST 1/4 CORNER AND THE CENTER OF SAID SECTION.] CALLED FOR NO. 4 REBAR w/OPC #23212 HAS
BEEN OBLITERATED BY THE PLACEMENT OF A 8"Ø WOOD POST AT THE CALLED FOR NO. 4 REBAR'S POSITION. SET
WITNESS MONUMENT S 00°46¾' E 1.0' FROM CORNER. CORNER FALLS IN CULTIVATED FIELD.

PLAN VIEW

(SHOW A MINIMUM OF THREE REFERENCE TIES TO DURABLE PHYSICAL OBJECTS, RELEVANT MONUMENTS AND PHYSICAL
CONDITIONS THAT WILL ENABLE RECOVERY OF THE CORNER.)



NO OTHER DURABLE, GERMANE PHYSICAL
OBJECTS TO REFERENCE TO.

SEE ASSOCIATED PLAT OF SURVEY
FOR "RECORDED AS" INFORMATION

ALL BEARINGS AND DISTANCE ARE TO THE
CORNER AND NOT THE WITNESS MONUMENT

(BEARINGS ARE ASSUMED)



HELLAND ENGINEERING & SURVEYING, LTD.

6109 Chancellor Drive
Cedar Falls, Iowa 50613-6916
(319)-266-0161

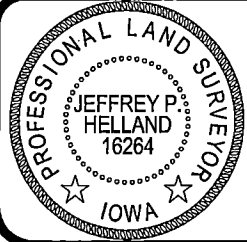
SHINER = 4d. NAIL & 1 5/16"Ø METAL SHINER DRAWN BY: JPH

BRASS TAG = 4d. NAIL & 13/16"Ø BRASS TAG

OPC = PLASTIC CAP (O=ORANGE, R=RED, Y=YELLOW)

(00') RECORDED AS

FILE NAME: 24-103-35.DWG



I hereby certify that this land surveying document was prepared
and the related survey work was performed by me or under my
direct personal supervision and that I am a duly licensed
Professional Land Surveyor under the laws of the State of Iowa.
Jeffrey P. Helland
License Number 16264
My license renewal date is December 31, 2025.
All pages or sheets are covered by this seal except:

LIST CORNERS TO BE INDEXED

CORNER	SECTION / TOWNSHIP / RANGE		
NE COR. NW ¼ SE ¼	15	89N	11W
SE COR. SW ¼ NE ¼	15	89N	11W
SW COR. SE ¼ NE ¼	15	89N	11W
NW COR. NE ¼ SE ¼	15	89N	11W