



Doc ID: 009460600001 Type: GEN
Recorded: 01/03/2019 at 04:15:13 PM
Fee Amt: \$7.00 Page 1 of 1
Black Hawk County Iowa
SANDIE L. SMITH RECORDER

File 2019-00010207

Reserved for County Recorder's use.

Kyle J. Helland, 6109 Chancellor Drive, Cedar Falls, Iowa 50613-6919, (319)-266-0161

UNITED STATES PUBLIC LAND SURVEY CORNER CERTIFICATE OF

LAND SURVEY MONUMENTS SITUATED IN SECTION NO. 15, TOWNSHIP NO. 89 NORTH, RANGE
NO. 11 WEST OF THE FIFTH PRINCIPAL MERIDIAN, BLACK HAWK COUNTY, IOWA.
PREVIOUSLY RECORDED IN N/A

(SHOW REASON FOR PREPARING THIS CERTIFICATE, THE EVIDENCE AND DETAILED PROCEDURES USED IN ESTABLISHING THE
CORNER POSITIONS AND MONUMENTATION FOUND OR PLACED.)

MONUMENT DESCRIPTION AND REMARKS:

NO USPLSCC ON FILE. SURVEY COMPLETED IN THE SE 1/4 OF SEC. 15-T89N-R11W.

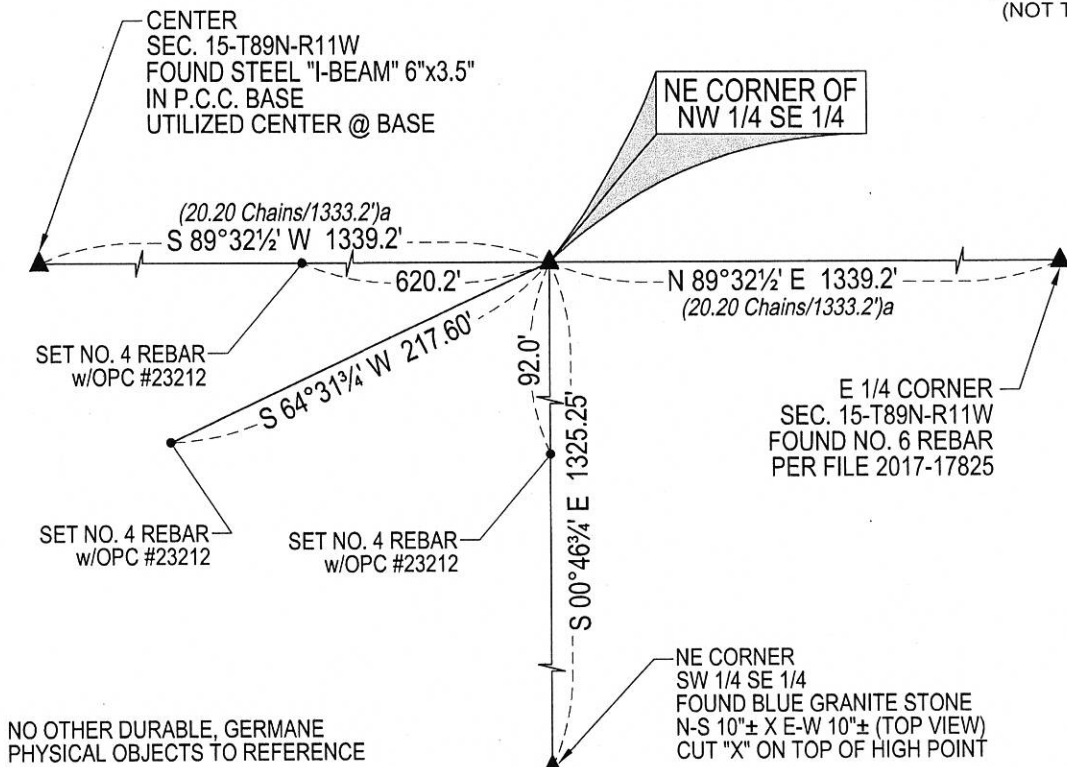
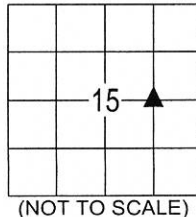
→ **NE CORNER OF THE NW 1/4 SE 1/4:** JOHN BALL HISTORICAL SURVEY PG 291 DATED 04/17/1866 & 11/27-28/1891 CALLS
FOR [STAKE]. SEARCHED AREA WITH METAL DETECTOR AND PROBED 5'Ø NOTHING FOUND, THEREFORE SET NO. 4
REBAR w/OPC #23212 AT MIDPOINT AND ON LINE BETWEEN THE EAST 1/4 CORNER AND THE CENTER OF SAID SECTION.

PLAN VIEW

(SHOW A MINIMUM OF THREE REFERENCE TIES TO DURABLE PHYSICAL OBJECTS, RELEVANT MONUMENTS AND PHYSICAL
CONDITIONS THAT WILL ENABLE RECOVERY OF THE CORNER.)

LEGEND

(0.0')a JOHN BALL HISTORICAL SURVEY PG
291 DATED 04/17/1866 & 11/27-28/1891



(BEARINGS ARE ASSUMED)



HELLAND ENGINEERING & SURVEYING, LTD.
6109 Chancellor Drive
Cedar Falls, Iowa 50613-6919
(319)-266-0161

SHINER = 4d. NAIL & 1 5/16"Ø METAL SHINER DRAWN BY: CDR
BRASS TAG = 4d. NAIL & 13/16"Ø BRASS TAG
OPC = PLASTIC CAP (O=ORANGE, R=RED, Y=YELLOW)
(00') RECORDED AS FILE NAME: 18-253-41.DWG



I hereby certify that this land surveying document was prepared
and the related survey work was performed by me or under my
direct personal supervision and that I am a duly licensed
Professional Land Surveyor under the laws of the State of Iowa.

Kyle J. Helland
License Number 23212
My license renewal date is December 31, 2019.
All pages or sheets are covered by this seal except:

LIST CORNERS TO BE INDEXED

CORNER	SECTION	TOWNSHIP	RANGE
NE COR. NW 1/4 SE 1/4	15	89N	11W
SE COR. SW 1/4 NE 1/4	15	89N	11W
SW COR. SE 1/4 NE 1/4	15	89N	11W
NW COR. NE 1/4 SE 1/4	15	89N	11W