



Doc ID: 009751050001 Type: GEN
Recorded: 01/28/2020 at 12:25:17 PM
Fee Amt: \$7.00 Page 1 of 1
Black Hawk County Iowa
SANDIE L. SMITH RECORDER

File 2020-00013222

Reserved for County Recorder's use.

Kyle J. Helland, 6109 Chancellor Drive, Cedar Falls, Iowa 50613-6916, (319)-266-0161

UNITED STATES PUBLIC LAND SURVEY CORNER CERTIFICATE
OF

LAND SURVEY MONUMENTS SITUATED IN SECTION NO. 14, TOWNSHIP NO. 89 NORTH, RANGE
NO. 11 WEST OF THE FIFTH PRINCIPAL MERIDIAN, BLACK HAWK COUNTY, IOWA.
PREVIOUSLY RECORDED IN N/A

(SHOW REASON FOR PREPARING THIS CERTIFICATE, THE EVIDENCE AND DETAILED PROCEDURES USED IN ESTABLISHING THE
CORNER POSITIONS AND MONUMENTATION FOUND OR PLACED.)

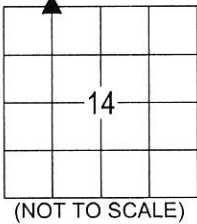
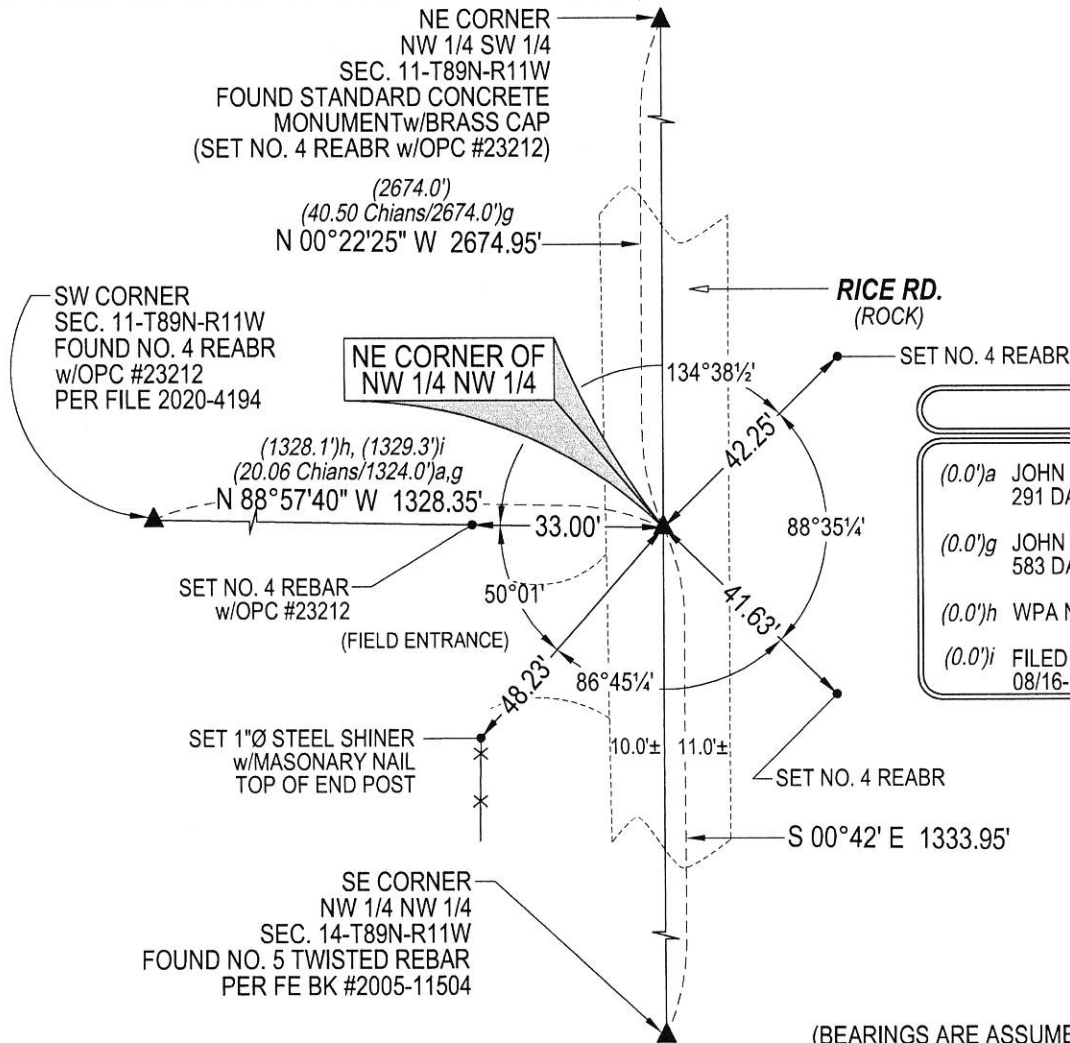
MONUMENT DESCRIPTION AND REMARKS:

NO USPLSCC ON FILE. SURVEY COMPLETED IN THE NW 1/4 NW 1/4 OF SEC. 14-T89N-R11W & THE SW 1/4 OF
SEC. 11-T89N-R11W.

NE CORNER OF THE NW 1/4 NW 1/4: JOHN BALL HISTORICAL SURVEY PG 291 DATED 04/17/1866 & 11/27-28/1891 CALLS FOR
[STONE]. JOHN BALL HISTORICAL SURVEY PG 583 DATED 10/04/1886 & 11/27-28/1891 CALLS FOR [STONE]. WPA NOTES PAGE 9
DATED 03/12/1942 CALLS FOR [1/4 1/4 P.T.]. FIELD NOTES PAGE 48 DATED 08/16-18/1943 CALLS FOR [DUG HOLE 5'x10'x3' AND
FOUND NOTHING. CONC. MON. WAS PLACED 1/2 WAY BETWEEN SW COR. & S 1/4 OF SEC. 11 IN ACCORD WITH JOHN BALLS
NOTES & ON STRAIGHT LINE]. SEARCHED AREA WITH MAGNETIC DETECTOR AND EXCAVATED 3'± x 4'± HOLE x 3'± DEEP, FOUND
STANDARD CONCRETE MONUMENT 2.7' DEEP SET NO. 4 REBAR w/OPC #23212 ABOVE SAID MONUMENT TO RAISE
MONUMENTATION, SET NO. 4 REBAR w/OPC #23212 0.3' DEEP.

PLAN VIEW

(SHOW A MINIMUM OF THREE REFERENCE TIES TO DURABLE PHYSICAL OBJECTS, RELEVANT MONUMENTS AND PHYSICAL
CONDITIONS THAT WILL ENABLE RECOVERY OF THE CORNER.)



LEGEND

- (0.0')a JOHN BALL HISTORICAL SURVEY PG 291 DATED 04/17/1866 & 11/27-28/1891
- (0.0')g JOHN BALL HISTORICAL SURVEY PG 583 DATED 10/04/1886
- (0.0')h WPA NOTES DATED 03/12/1942
- (0.0')i FILED BOOK 263 PG 48 DATED 08/16-18/1943

(BEARINGS ARE ASSUMED)



HELLAND ENGINEERING & SURVEYING, LTD.
6109 Chancellor Drive
Cedar Falls, Iowa 50613-6916
(319)-266-0161

SHINER = 4d. NAIL & 1 5/16"Ø METAL SHINER
BRASS TAG = 4d. NAIL & 13/16"Ø BRASS TAG
OPC = PLASTIC CAP (O=ORANGE, R=RED, Y=YELLOW)
(00') RECORDED AS FILE NAME: 19-228-53.DWG



I hereby certify that this land surveying document was prepared
and the related survey work was performed by me or under my
direct personal supervision and that I am a duly licensed
Professional Land Surveyor under the laws of the State of Iowa.

Kyle J. Helland
License Number 23212
My license renewal date is December 31, 2021.
All pages or sheets are covered by this seal except:

LIST CORNERS TO BE INDEXED

CORNER	SECTION	TOWNSHIP	RANGE
NE COR. NW 1/4 NW 1/4	14	89N	11W
SE COR. SW 1/4 SW 1/4	11	89N	11W
SW COR. SE 1/4 SW 1/4	11	89N	11W
NW COR. NE 1/4 NW 1/4	14	89N	11W