

PROOF FILED FOR RECORD NOV 5 2004 AT 3:00 P.M. FEE N/C

COMPARED

BLACK HAWK COUNTY RECORDER

BLACK HAWK COUNTY ENGINEERS OFFICE

PREPARED BY: BLACK HAWK COUNTY ENGINEERS OFFICE
316 E. FIFTH STREET, ROOM 211 WATERLOO, IOWA 50703PH.# (319) 833-3008
FAX.# (319) 833-3139SLSI 9-94
CERT 12-96

UNITED STATES PUBLIC LAND SURVEY CORNER CERTIFICATE OF
Land Survey Monuments situated in Section 14, Township 89 N,
Range 11 W, of the Fifth Principal Meridian, BLACK HAWK County, Iowa.
Previously recorded in Misc. Book N/A, Page N/A, in County Recorder's Office.

(Show reason for preparing this certificate, the evidence and detailed procedures used in establishing the corner positions and monumentation found or placed.)

Monument Description and Remarks: FND. #5 TWISTED RBR. w/ SQ. TOP
LOC. +/- C.L. INTERSECTION @ 14" DEEP. SURVEY FOR RICE ROAD NORTH,
AND UTIL. AS RANDOM LINE REF. TO W. 1/16 COR. (N) IN SECT. 11-89-11.
REFER TO COUNTY ENG. FIELD BK. #115 p.17 "AND" BK. #139 p.56 FOR
BARCLAY RD. THRU SECTION, AND REFER TO CO. ENG. BK. #263 pp48-49
FOR RICE RD. NORTH, TO INCLUDE SECT. 11-89-11 SURVEY BY "BALL", 1886.

PLAN - VIEW

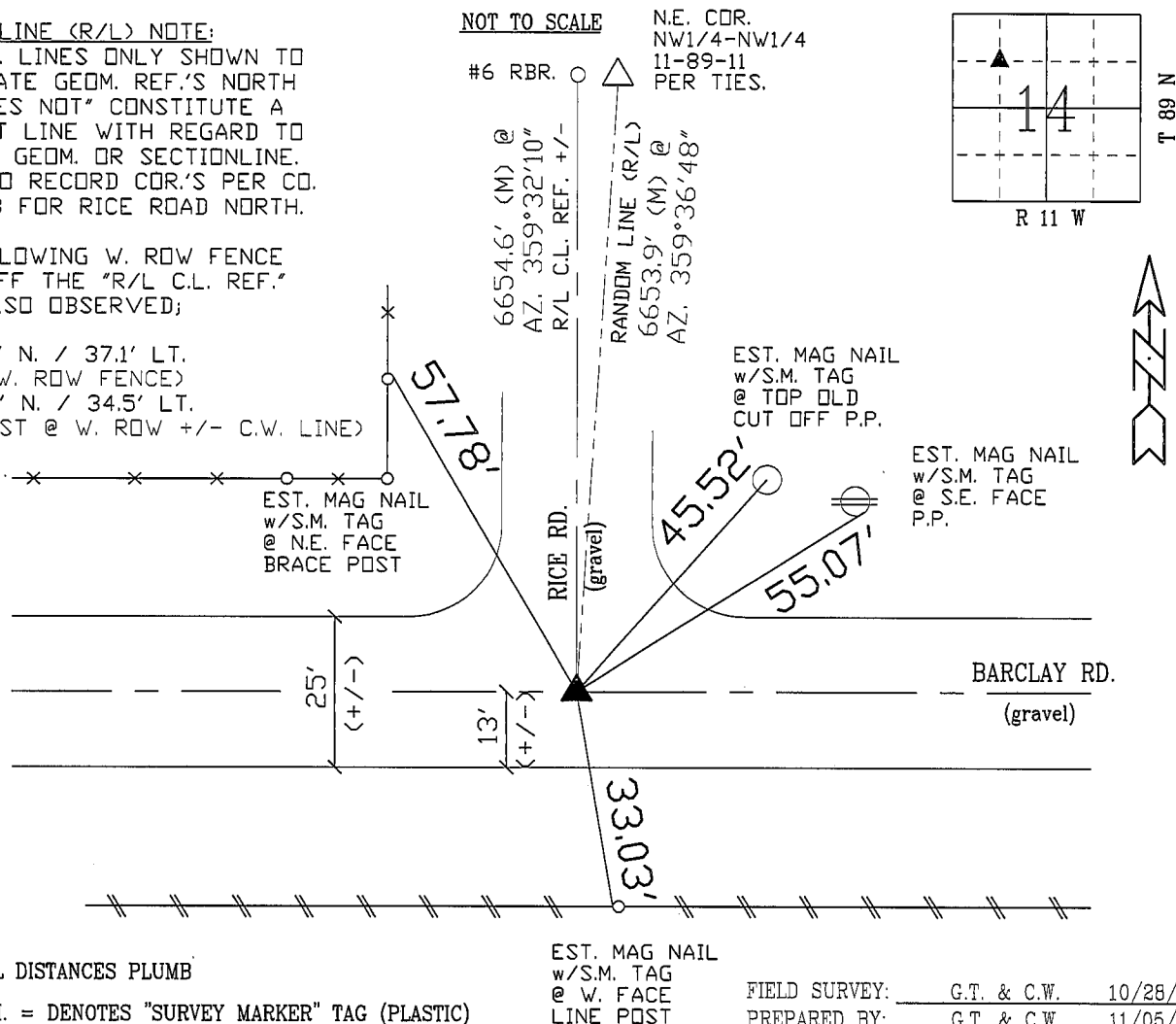
(Show a minimum of three reference ties to durable physical objects, relevant monuments and physical conditions that will enable recovery of the corner.)

RANDOM LINE (R/L) NOTE:

R/L REF. LINES ONLY SHOWN TO
ILLUSTRATE GEOM. REF.'S NORTH
AND "DOES NOT" CONSTITUTE A
STRAIGHT LINE WITH REGARD TO
RICE RD. GEOM. OR SECTIONLINE.
REFER TO RECORD COR.'S PER CO.
BK. #263 FOR RICE ROAD NORTH.

THE FOLLOWING W. ROW FENCE
REF.'S OFF THE "R/L C.L. REF."
WERE ALSO OBSERVED;

@ 1340.9' N. / 37.1' LT.
(DATED W. ROW FENCE)
@ 4009.9' N. / 34.5' LT.
(COR. POST @ W. ROW +/- C.W. LINE)



CERTIFICATION



I hereby certify that this land surveying document was prepared and the related survey work was performed by me or under my direct personal supervision and that I am a duly licensed Land Surveyor under the laws of the State of Iowa.

Geoffrey Allen Tinker 11/05/04
(date)

License Number 15748

My license renewal date is December 31, 2004

Pages or sheets covered by this seal:

This Land Corner Certificate Only.

LIST CORNERS TO BE INDEXED

Corner	Section	Township	Range
N.W. 1/16 COR.	14	89 N	11 W